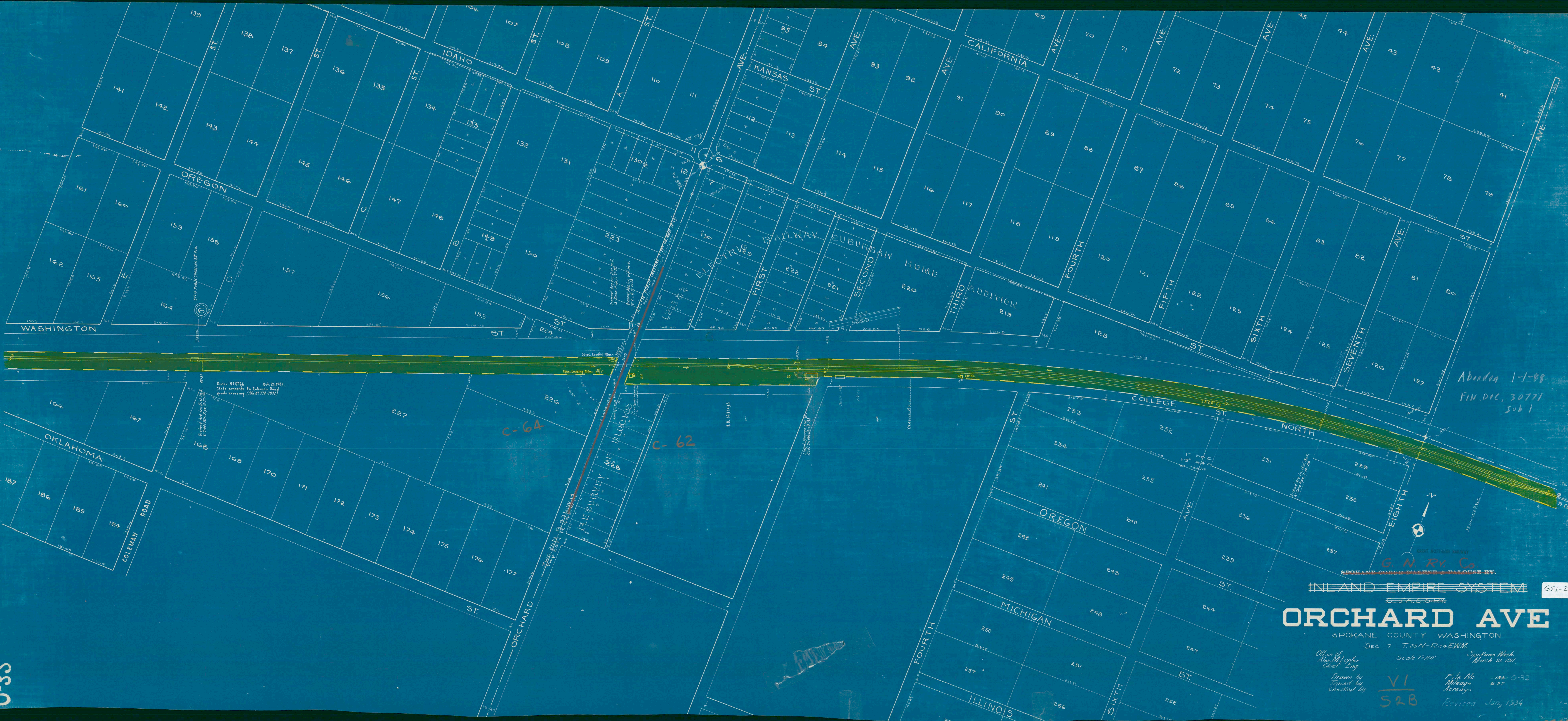


0-35

0-35



Order W55555 Oct 21, 1932.
 State consents to Coleman Road
 grade crossing (St. 45374-1932)

Abandon 1-1-88
 FIN. DIC. 30771
 sub 1

C-64
 C-62

G. N. RY. CO.
 SPOKANE COEUR D'ALENE & PALOUSE RY.
 INLAND EMPIRE SYSTEM
 CASSEY

ORCHARD AVE

SPOKANE COUNTY WASHINGTON
 SEC. 7 T. 25N-R. 14E.W.M.

Office of Alex. M. Luyker Chief Eng. Spokane Wash. March 21, 1931.
 Scale 1"=100'

Drawn by VI S2B
 Traced by VI S2B
 Checked by VI S2B
 File No. 100-0-32
 Mileage 6.27
 Acreage
 Revised Jan'y 1934

651-28

0-35

VI S2B