

MAP VOID  
TRACK REMOVED

APPROX CTR LINE PROP'D FREEWAY

EAST SPOKANE

5

6

7

8

9

EDGECLIFF

SPEAR

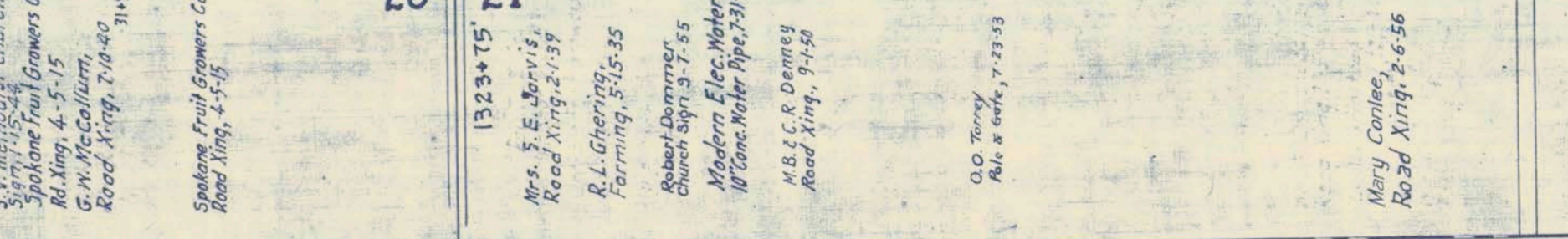
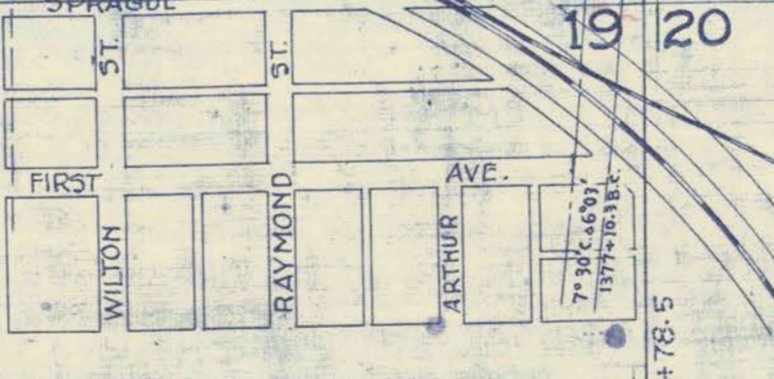
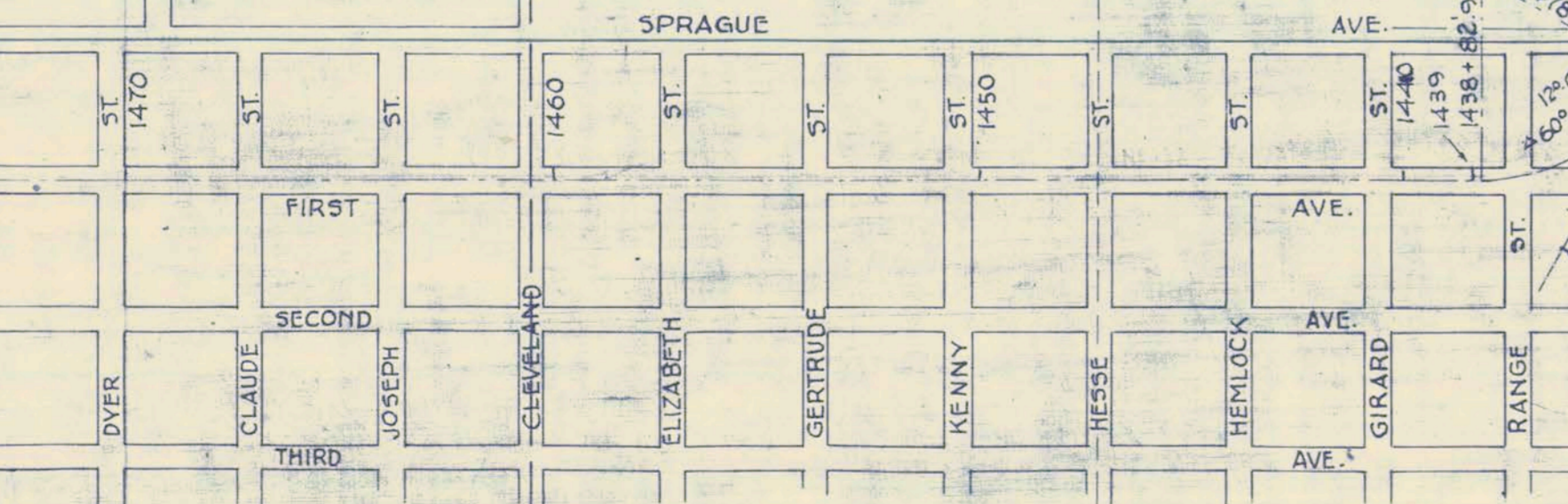
DISHMAN

FARR

APPLE CENTER

BOWDISH

OPPORT



Abandoned, Docket No. AB-6 (Sub No. 50F)  
Sold by G.C.O. dated 7-31-79 recorded  
9-4-79 to G.W. & N. Co.

1.04 miles of track

END OF TRACK 1977 +15

TRACK ABANDONED

Donated to Spokane County  
(G.N. Ry. Co's letter of Feb. 9, 1960)

Property shown colored Red is reclassified  
as "NONOPERATING PROPERTY" beginning Jan. 1, 1964  
(See G.N. letter dated Nov. 29, 1963)

651-5

GREAT NORTHERN RAILWAY



SCALE 1 INCH = 400 FT.