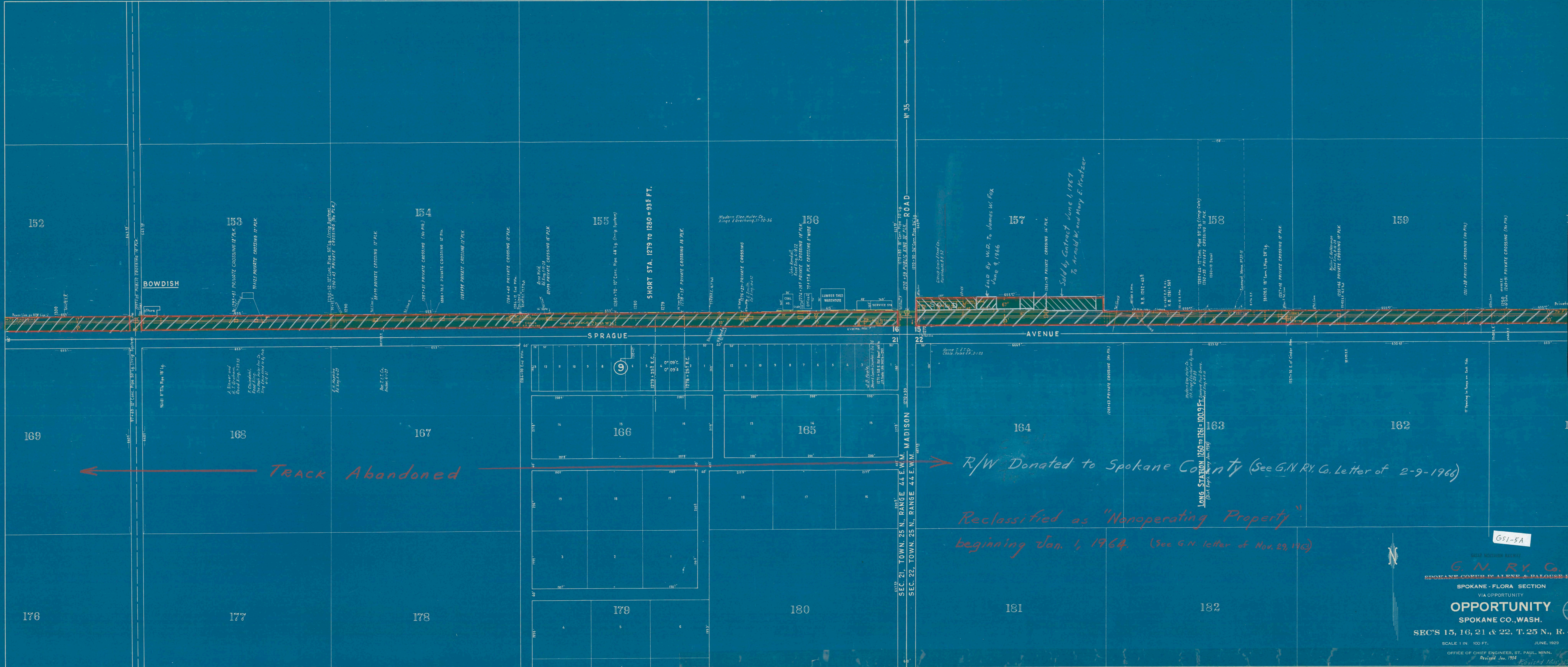


2 3 4 5 6 7 8 9



BOWDISH

SPRAGUE

AVENUE

SEC. 21, TOWN. 25 N., RANGE. 44 E. W.M. MADISON
SEC. 22, TOWN. 25 N., RANGE. 44 E. W.M.

← Track Abandoned → R/W Donated to Spokane County (See G.M. Ry. Co. Letter of 2-9-1964)
Reclassified as "Nonoperating Property" beginning Jan. 1, 1964. (See G.M. letter of Nov. 29, 1963)

GS1-5A

G. M. RY. CO.
SPOKANE COBUR, DALENE & PALOUSE RY.
SPOKANE - FLORA SECTION
VIA OPPORTUNITY
OPPORTUNITY
SPOKANE CO., WASH.
SEC'S 15, 16, 21 & 22, T. 25 N., R. 4
SCALE 1 IN. = 100 FT. JUNE, 1929
OFFICE OF CHIEF ENGINEER, ST. PAUL, MINN.
Revised Jan. 1934 Revised May 1936