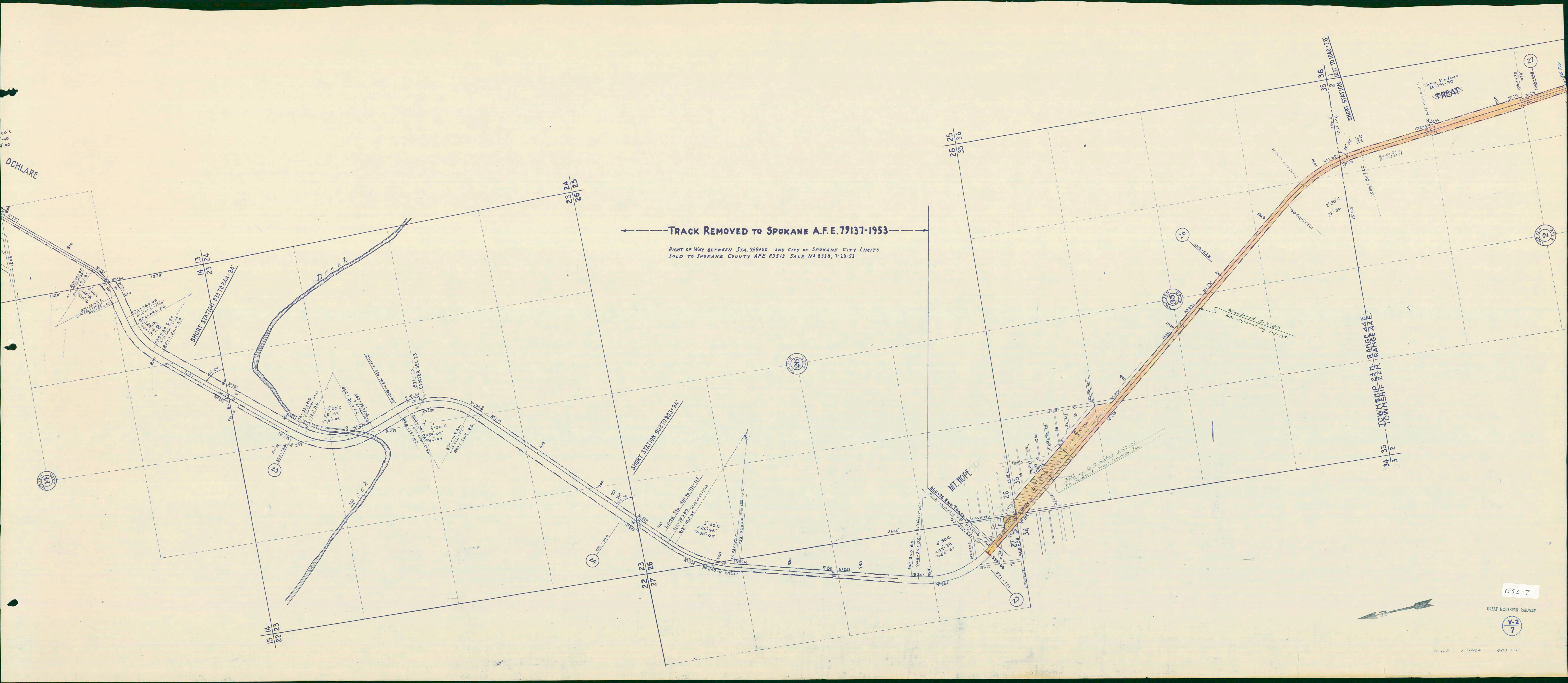


OCHLARE



← TRACK REMOVED TO SPOKANE A.F.E. 79137-1953 →

RIGHT OF WAY BETWEEN STA. 959+00 AND CITY OF SPOKANE CITY LIMITS  
SOLD TO SPOKANE COUNTY AFE 83513 SALE N° 8336, 7-23-53

SHORT STATION 837 TO 844+94

SHORT STATION 907 TO 913+94

TOWNSHIP 22 N. RANGE 44 E.  
TOWNSHIP 22 N. RANGE 44 E.

Station Abandoned  
Afe 5596-1918  
TREAT

Abandoned 5-3-53  
Non-operating 1-1-54

Sold by QCD Airtel 10-23-26  
to Rockford Grain Company, Inc.

G52-7

GREAT NORTHERN RAILWAY

V-2  
7

SCALE 1" = 400 FT