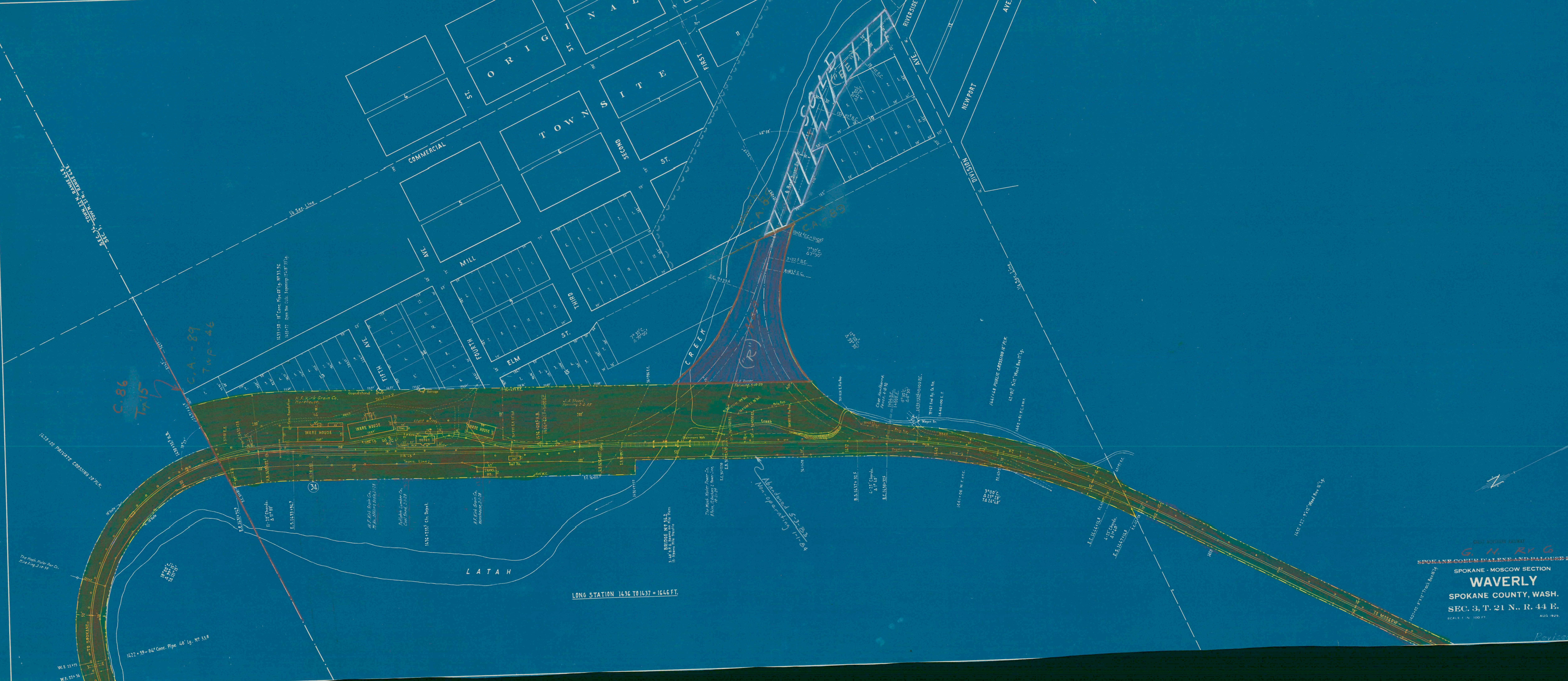


2 3 4 5 6



1472 + 59 - 84" Conc. Pipe 48" Ig. No. 33.8

LONG STATION 1436 TO 1437 = 1646 FT.

G. H. RYAN
 SPOKANE-COEUR D'ALENE AND PALOUSE RY. CO.
 SPOKANE - MOSCOW SECTION
WAVERLY
 SPOKANE COUNTY, WASH.
 SEC. 3, T. 21 N., R. 44 E.
 SCALE 1" = 100 FT.
 AUG. 1925.

692-9A

V-2
5-9A

W-69