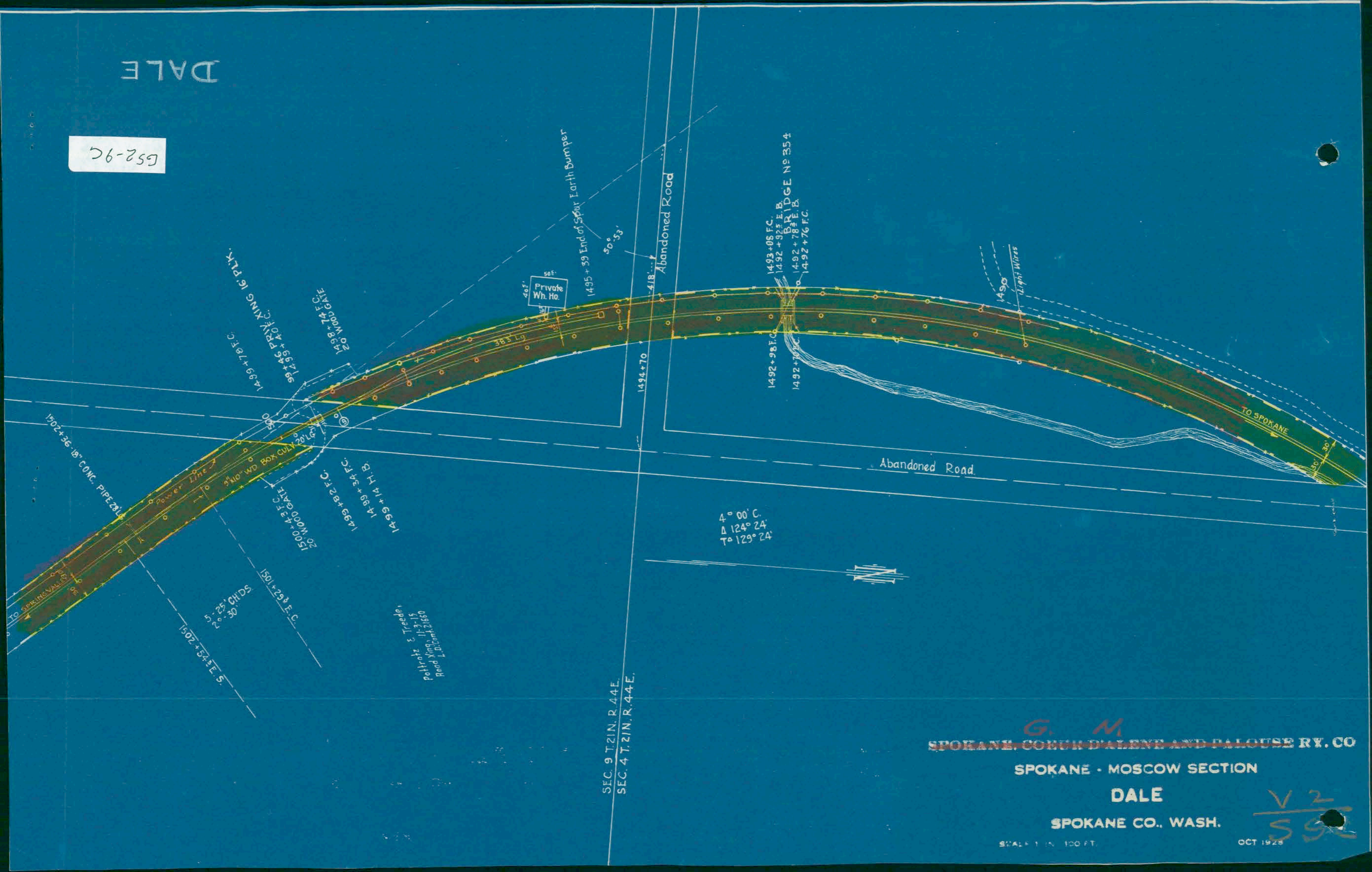


DALE

G52-9C



Pottroff & Treeden  
 Portland, 11-3-19  
 Road Xing. 11-2-1880  
 Road L.D. Cont. 2, 1880

SEC. 9 T. 21 N. R. 44 E.  
 SEC. 4 T. 21 N. R. 44 E.

**G. M.**  
 SPOKANE COMMERCIAL AND PALOUSE RY. CO

SPOKANE - MOSCOW SECTION

DALE

SPOKANE CO., WASH.

V 2  
 592

SCALE 1 IN. = 100 FT.

OCT 1925