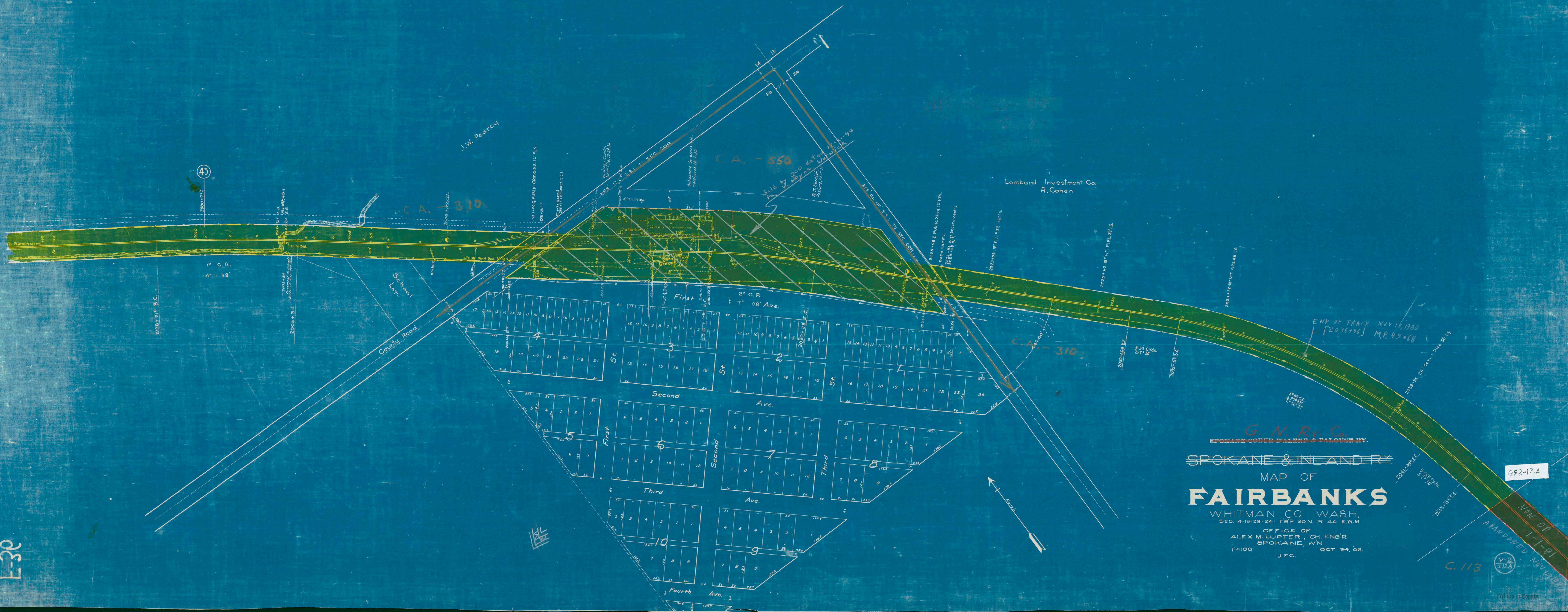


84-

F-30

Fairbanks

Fairbanks



G. N. R. C.
 SPOKANE COEUR D'ALENE & DALOUSE RY.
 SPOKANE & INLAND RY.
 MAP OF
FAIRBANKS
 WHITMAN CO. WASH.
 SEC. 14-13-23-24, TWP 20N, R. 44 E.W.M.
 OFFICE OF
 ALEX. M. LUPFER, CH. ENG'R
 SPOKANE, WN
 OCT 24, '06.
 1"=100'

END OF TRACK NOV 10, 1900
 [2036+46] M.P. 45+68

G52-12A

NON OP. 1-17-91
 ABANDONED, NOV 1900
 V-2
 512A

C. 113

F-37