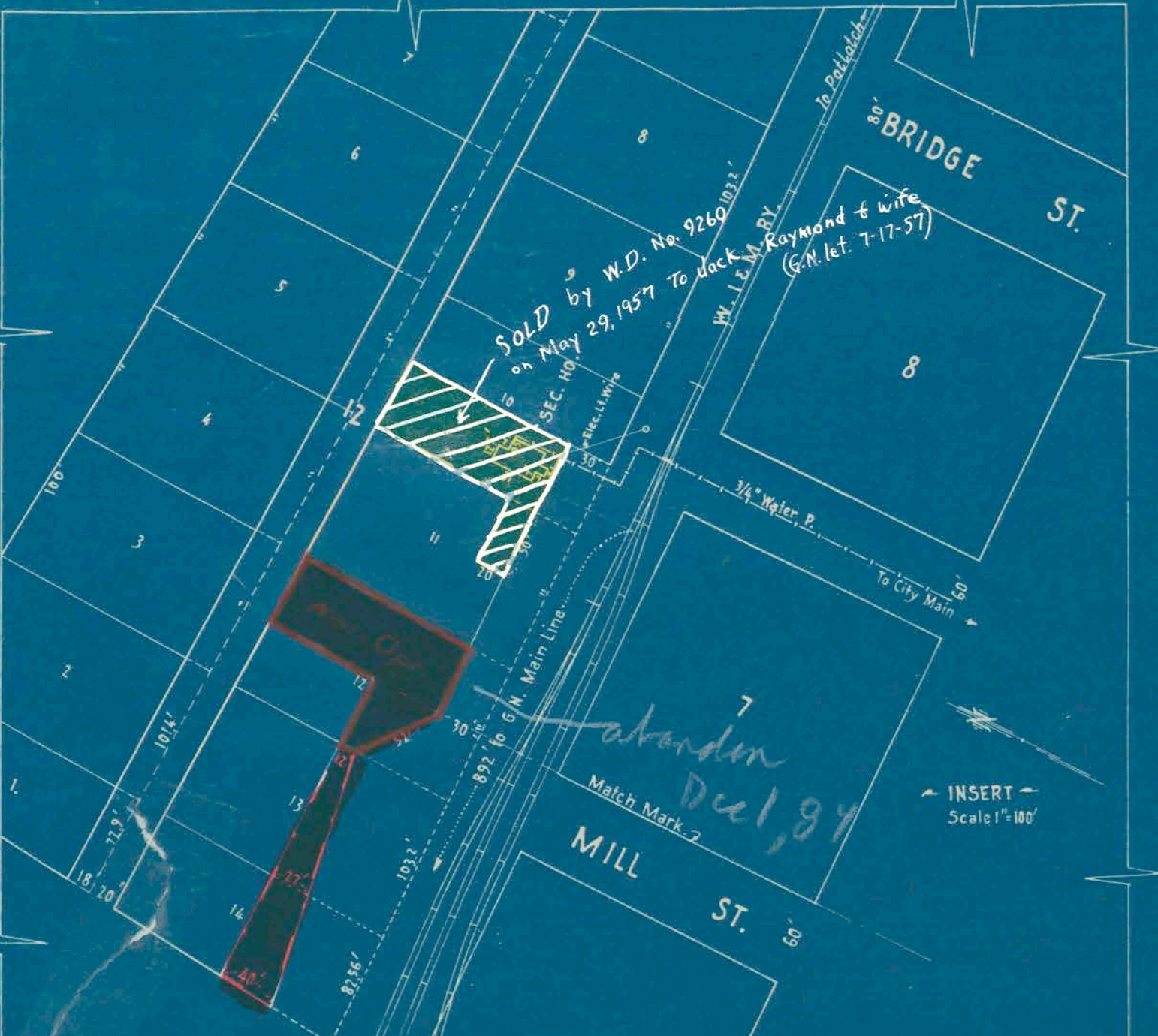




L.D. Cont. No 25510 May 13 1901
 Agreement covering attachments by
 the S.P.R. to the W.W.D. Co. made line
 just East of Division St.

L.D. Cont. No 21621 Aug 1 1906
 Wash. Water & Mont. Ry. grants S & all Ry.
 right to construct and maintain a bridge across
 W.L.M. Ry. tracks, at the Palouse Falls.
 S & all grants W.L.M. joint use of inter-
 change trk. and right to use S & all right
 way west of the west line of Ash St. for
 warehouses etc.

Purchased by Special Warrant
 Dated 16 Jan 1897 from C.M. 1897



G. N. R. & G.
 SPOKANE-COEUR D'ALENE AND PALOUSE RY. CO.
 SPOKANE - MOSCOW SECTION
PALOUSE
 WHITMAN CO. WASH.
 SEC. 1, T. 16 N., R. 45 E. W. M.
 SCALE 1 IN. = 100 FT. OCT 1928

55 2 - 20A

V-2
 S-20A