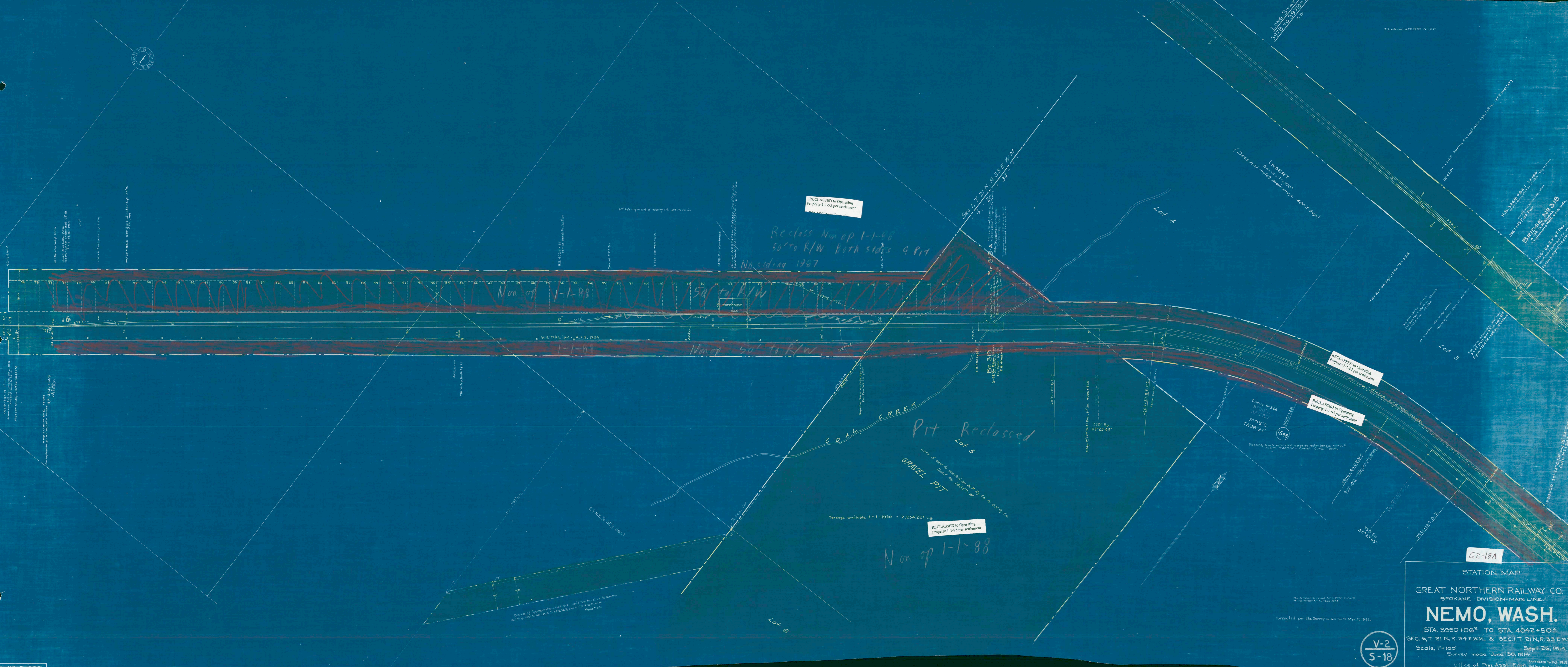


THE STANDARD A.F.E. 1927, FEB. 1927

LONG STAY  
3978 TO 3979  
V.S.



RECLASSIFIED to Operating  
Property 1-1-95 per settlement

Reclass Non op 1-1-98  
50' to R/W Both sides 9 Pit  
Nooding 1987

Non op 1-1-98  
50' to R/W

Pit Reclassed  
Lot 5

GRAVEL PIT

Yardage available 1-1-1920 = 2,234,227 cu yd.

RECLASSIFIED to Operating  
Property 1-1-95 per settlement

Non op 1-1-98

RECLASSIFIED to Operating  
Property 1-1-95 per settlement

RECLASSIFIED to Operating  
Property 1-1-95 per settlement

BRIDGE No 218  
Span 64.5' x 6' 0" P.C.  
Truss Bridge with 2 spans  
Total length 129' 0" x 6' 0"

62-18A

STATION MAP  
GREAT NORTHERN RAILWAY CO.  
SPOKANE DIVISION-MAIN LINE.

**NEMO, WASH.**

STA. 3990+06<sup>00</sup> TO STA. 4042+50<sup>41</sup>  
SEC. 9, T. 21 N., R. 34 E. W. M., & SEC. 1, T. 21 N., R. 33 E. W. M.  
Scale, 1"=100' Sept. 26, 1914.  
Survey made June 30, 1914.

V-2  
S-18

Office of Prin. Asst. Engr. Valby, Spokane Office  
Corrected to Oct. 1915  
Scotling, Wash.