

G. N. RY.  
PLAN OF STANDARD  
SWITCH BOX CONNECTIONS  
OFFICE OF SIGNAL ENGINEER

SCALE IN : 1 IN.

JAN 1922

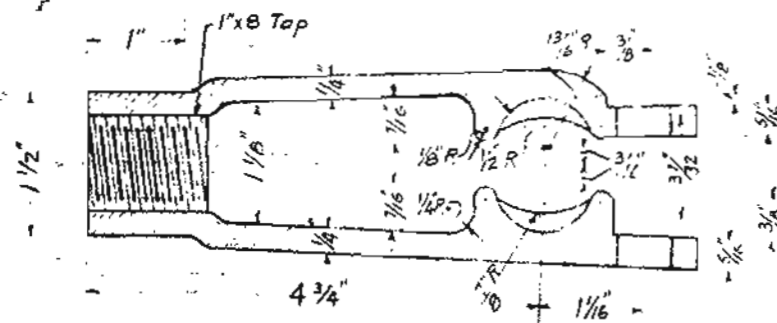
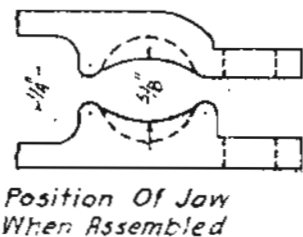


Fig. A - Adj. Socket Screw Jaw  
(Malleable Iron)  
Scale 1/2" = 1"



Position Of Jaw  
When Assembled

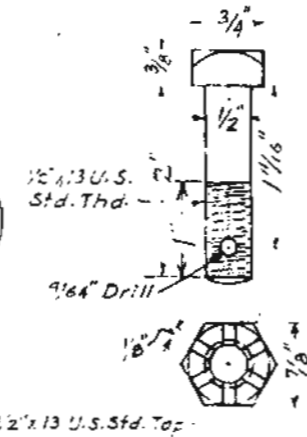


Fig. B  
Sq. Hd. Bolt  
& Hex. Nut  
Made From Std. C.P. Nut  
Scale 1/2" = 1"

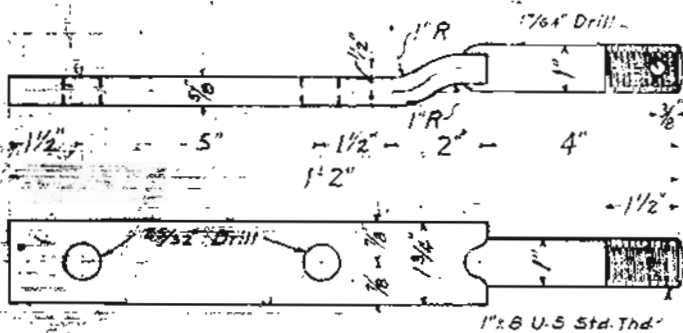


Fig. C - Point Lug  
(Forged Steel)

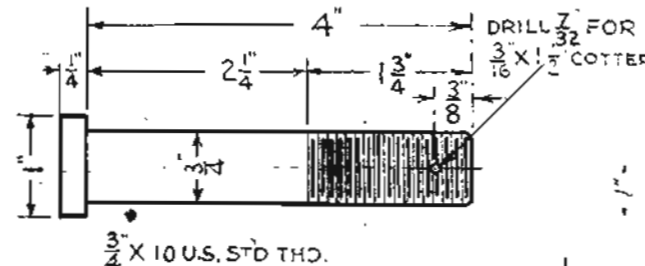


FIG. - G.  
SWITCH POINT LUG BOLT,  
SQ HD. BOLT WITH 3/4" HEX NUT  
AND NUT LOCK.

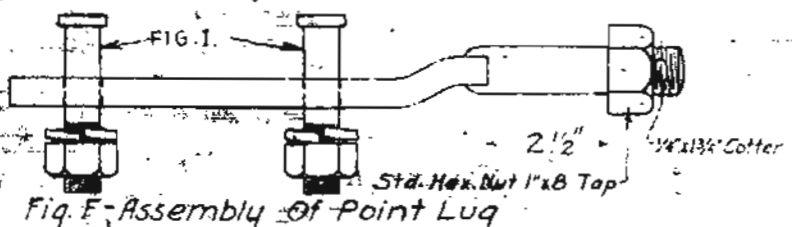


Fig. F - Assembly Of Point Lug

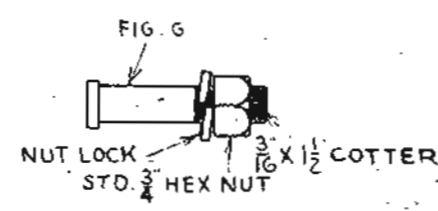


FIG. I.  
ASSEMBLY  
SWITCH POINT LUG BOLT.

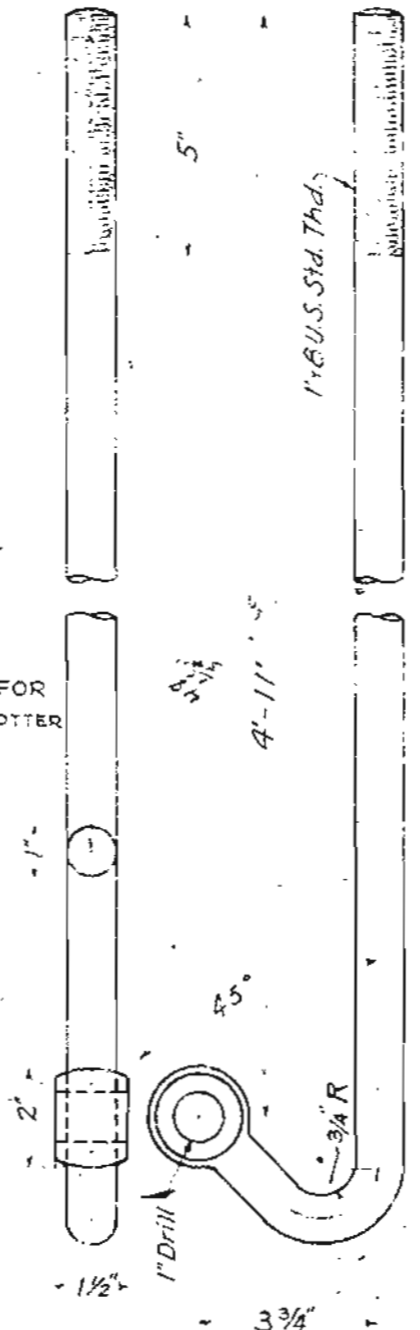


Fig. D - Short Connecting Rod  
(Forged Steel)

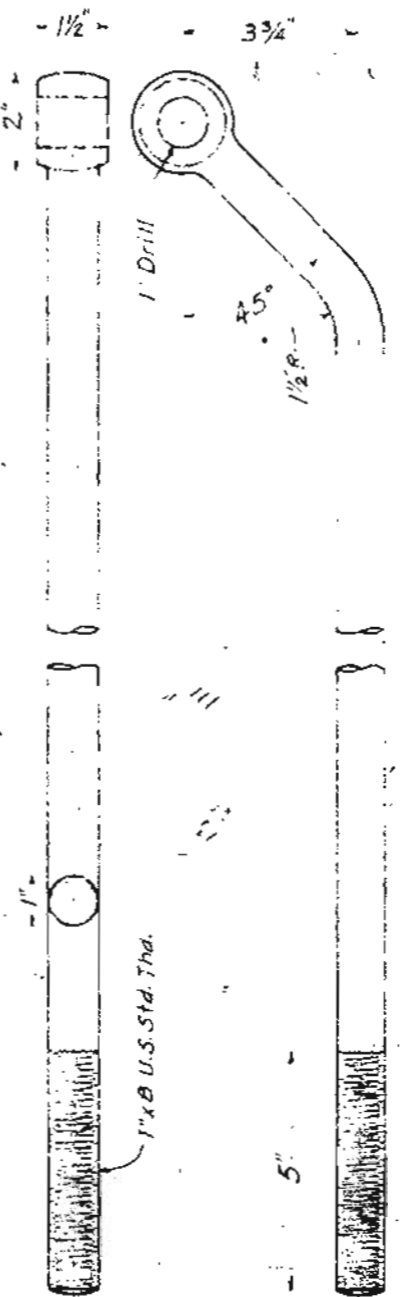


Fig. E - Long Connecting Rod  
(Forged Steel)

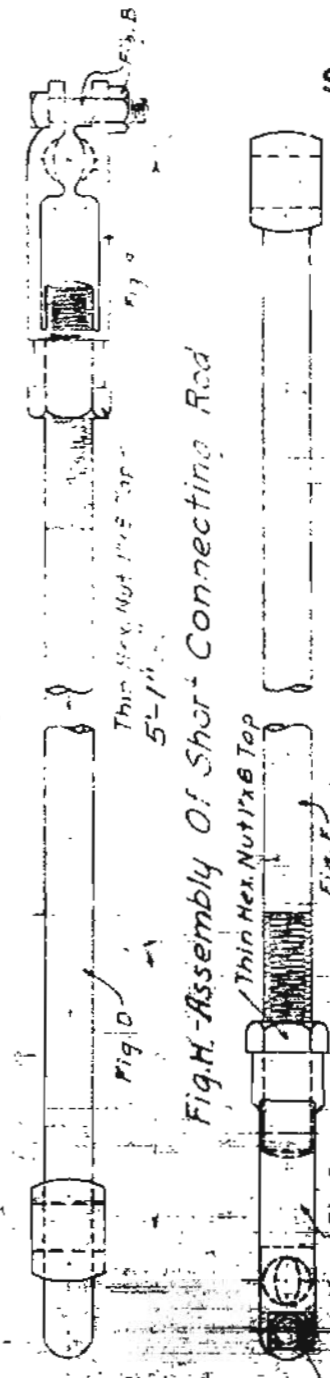


Fig. H - Assembly Of Short Connecting Rod

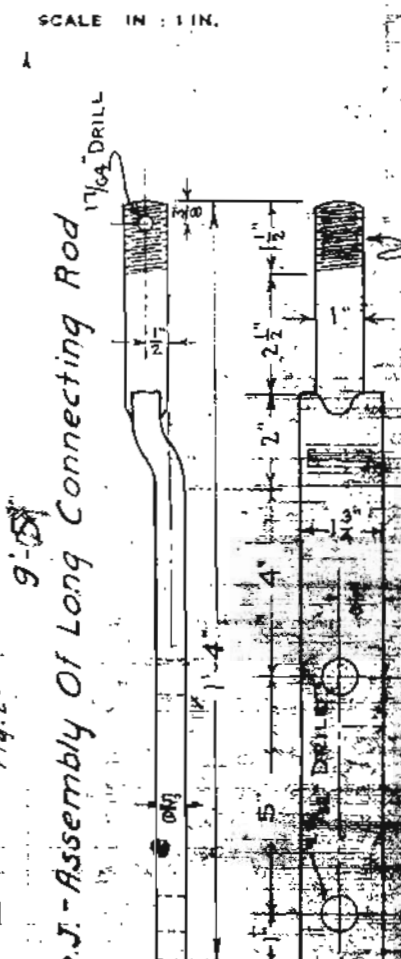


Fig. J - Assembly Of Long Connecting Rod

Checked by  
Approved by  
Signal  
JAN 19 22

7/30/32	5/14/26	7-21-24	REV.	167-24
---------	---------	---------	------	--------