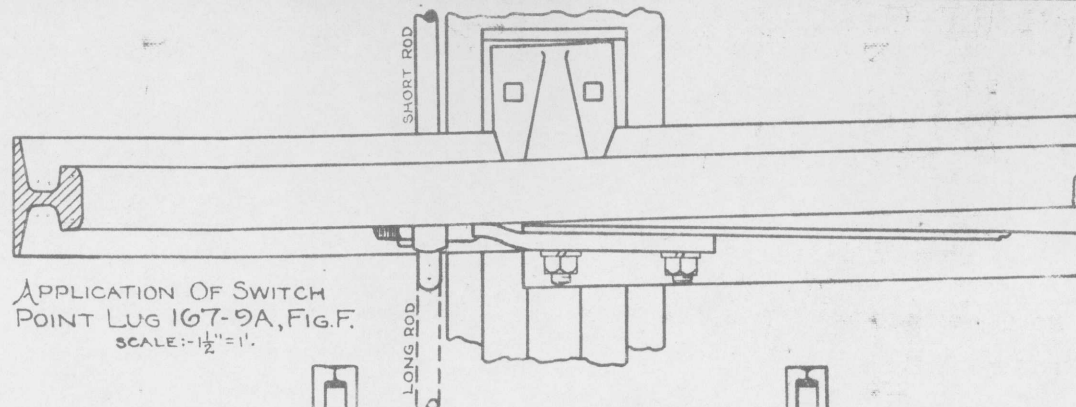


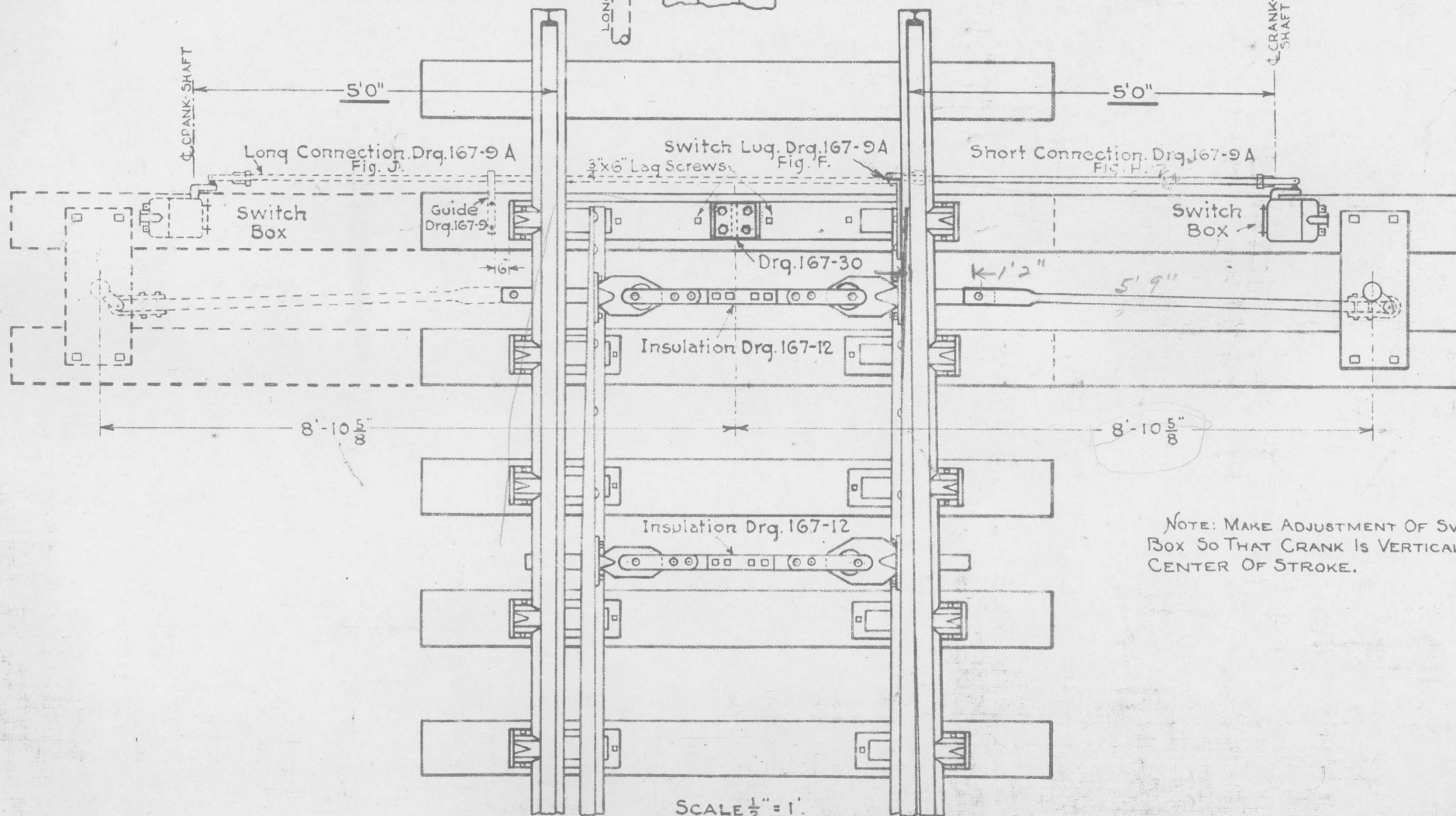
A

# G. N. RY. PLAN OF STANDARD SWITCH BOX APPLICATION

OFFICE OF SIGNAL ENGINEER



APPLICATION OF SWITCH  
POINT LUG 167-9A, FIG. F.  
SCALE:  $\frac{1}{2}'' = 1'$ .



SCALE  $\frac{1}{2}'' = 1'$ .

48  
12  
60  
59  
119

NOTE: MAKE ADJUSTMENT OF SWITCH  
BOX SO THAT CRANK IS VERTICAL AT  
CENTER OF STROKE.

Drawn by *H.A.T.*  
Checked by *H.E.B.*  
Approved by *C.A.S.*  
Signal Engr.

4-19-15

11/14/23 REVISED

167-10