

FIG. A. 2-ARM BRIDGE SIGNAL LADDER. (OPEN HEARTH STEEL)

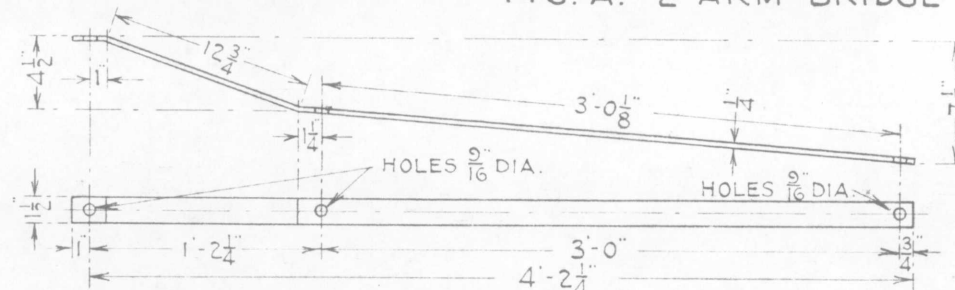


FIG. B. LADDER BRACE (OPEN HEARTH STEEL)

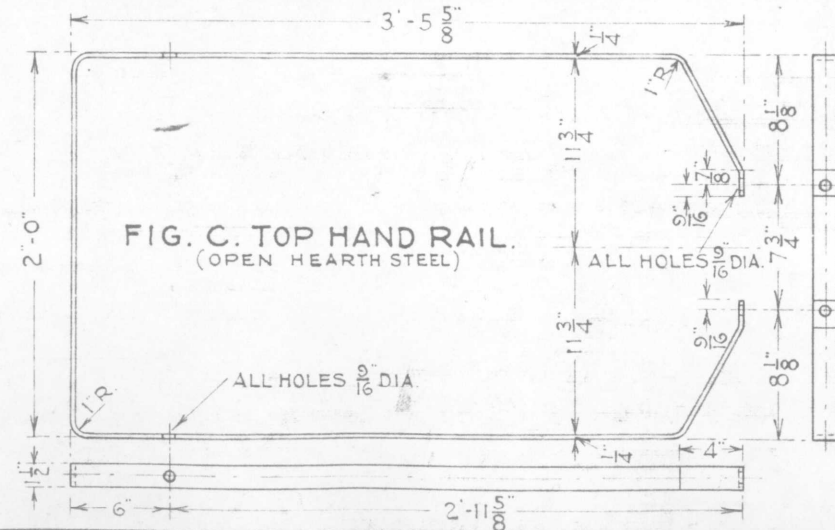


FIG. C. TOP HAND RAIL. (OPEN HEARTH STEEL)

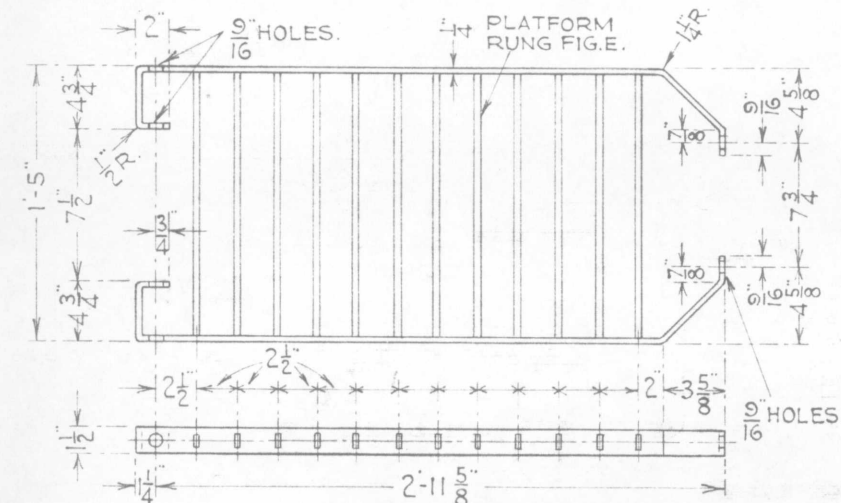


FIG. D. TOP PLATFORM. (OPEN HEARTH STEEL)

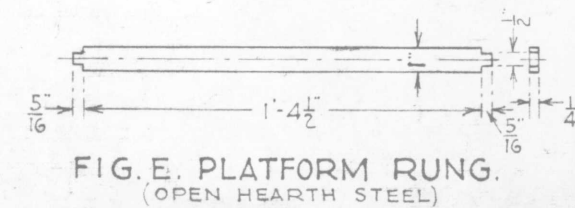


FIG. E. PLATFORM RUNG. (OPEN HEARTH STEEL)

**G. N. RY.**  
 PLAN OF STANDARD  
**LADDER FOR 2-ARM ELECTRICAL  
 SIGNAL FOR SIGNAL BRIDGE**  
**PLAN NO. 110-2-1**

OFFICE OF SIGNAL ENGINEER ST. PAUL, MINN.  
 SCALE 1"=1'-0"  
 MAR. 1920.

**BILL OF MATERIAL FOR COMPLETE LADDER**

1	2-ARM BRIDGE SIGNAL LADDER, FIG. A.
2	LADDER BRACES, FIG. B. R.S.A. 13629.
1	TOP HAND RAIL, FIG. C. R.S.A. 13631.
1	TOP PLATFORM, FIG. D. R.S.A. 13643.
4	5/8" STAY CLAMP HALVES, FIG. F. R.S.A. 13711.
4	1/2" X 1 1/2" SQ. HD. BOLTS + NUTS.
2	1/2" X 1 1/2" "
6	1/2" X 1" "

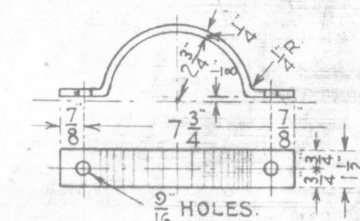


FIG. F. 5/8" STAY CLAMP (HALF). (OPEN HEARTH STEEL)

Drawn by *Hat*  
 Checked by *J.R.C.*  
 Approved by *C.S.*  
 Signal Engr.  
 3-24-20.  
**167-101A**