

FIG. A. 5 1/2" STAY CLAMP (HALF)
(OPEN HEARTH STEEL)

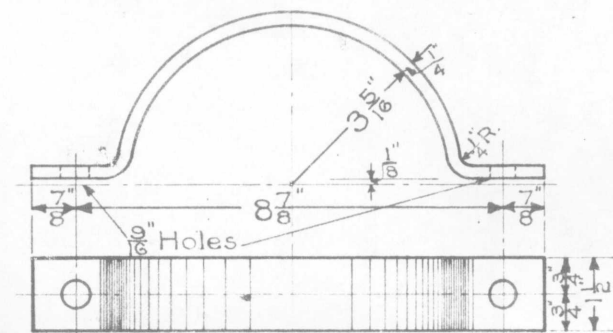


FIG. B. 6 5/8" STAY CLAMP (HALF)
(OPEN HEARTH STEEL)

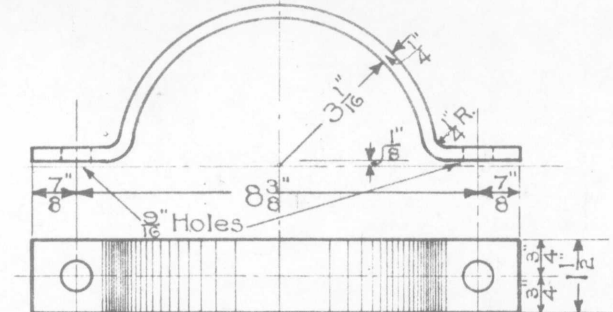


FIG. C. 6 1/8" STAY CLAMP-SWAGE-(HALF)
(OPEN HEARTH STEEL)

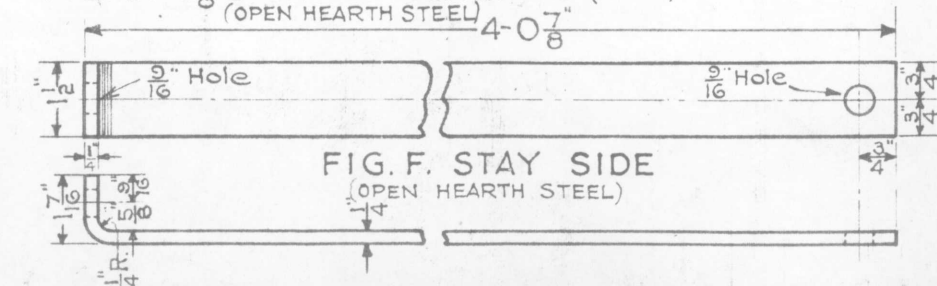


FIG. F. STAY SIDE
(OPEN HEARTH STEEL)

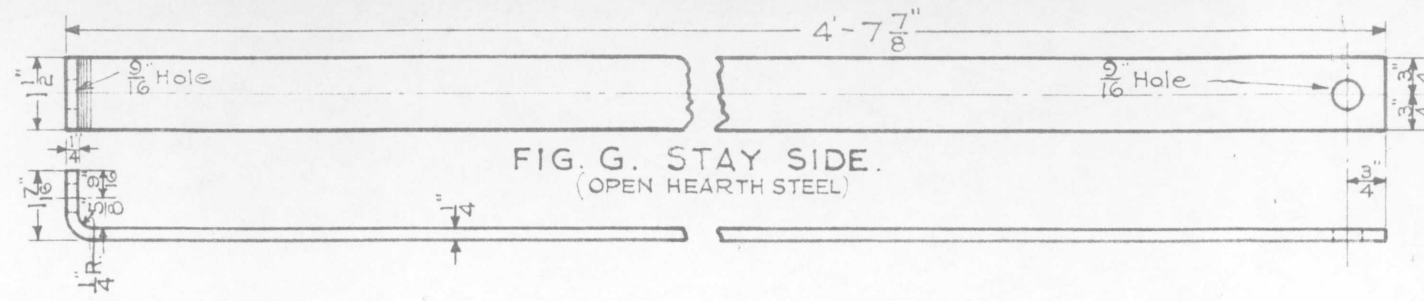


FIG. G. STAY SIDE
(OPEN HEARTH STEEL)

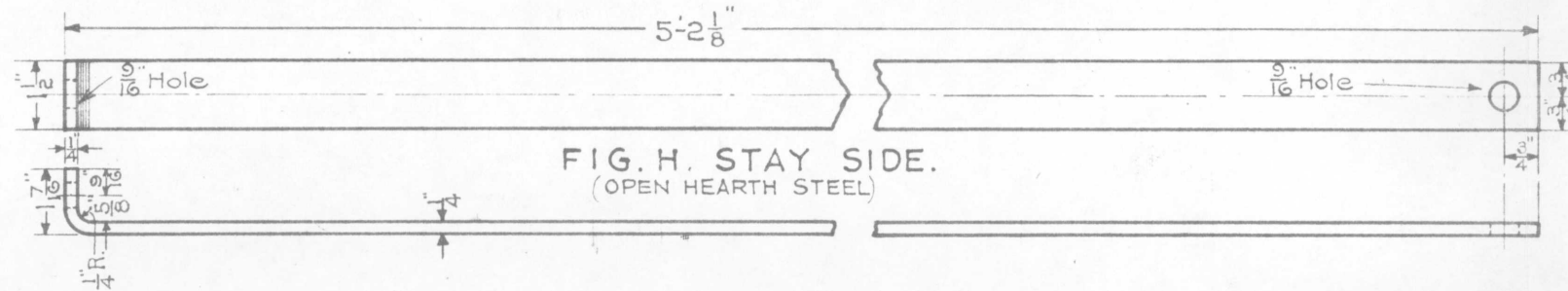


FIG. H. STAY SIDE
(OPEN HEARTH STEEL)

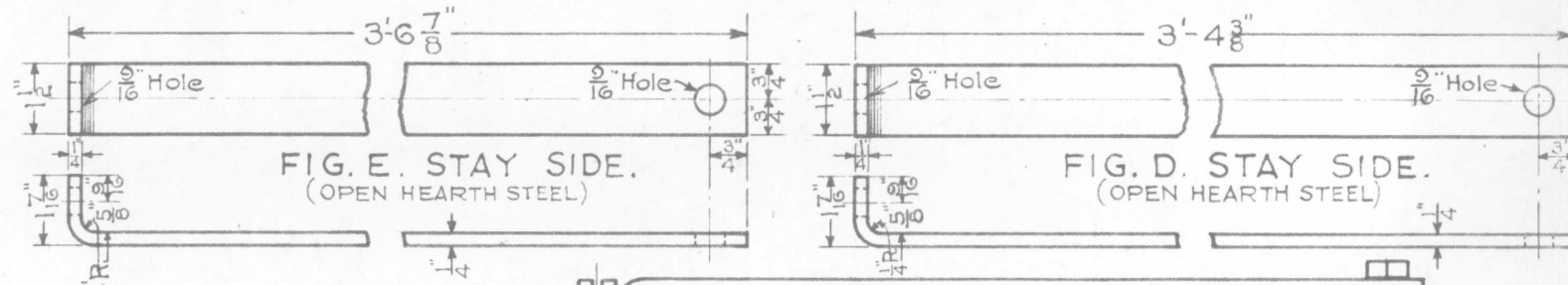
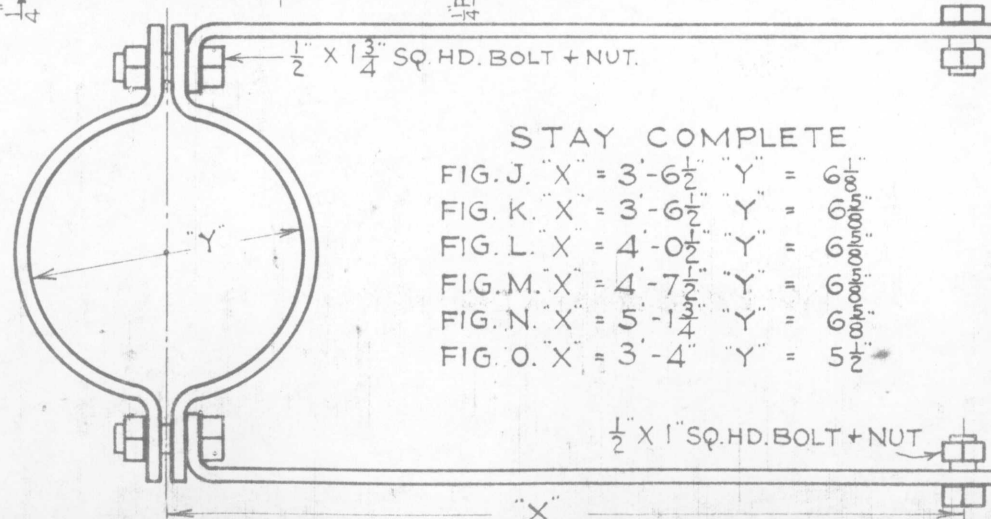


FIG. E. STAY SIDE
(OPEN HEARTH STEEL)

FIG. D. STAY SIDE
(OPEN HEARTH STEEL)



STAY COMPLETE

- FIG. J. X = 3-6 1/2" Y = 6 1/2"
- FIG. K. X = 3-6 1/2" Y = 6 1/2"
- FIG. L. X = 4-0 1/2" Y = 6 1/2"
- FIG. M. X = 4-7 1/2" Y = 6 1/2"
- FIG. N. X = 5-1 1/4" Y = 6 1/2"
- FIG. O. X = 3-4" Y = 5 1/2"

- FIG. A. = R.S.A. 13711.
- FIG. B. = R.S.A. 13712.
- FIG. C. = R.S.A. 13713.
- FIG. D. = R.S.A. 13710.
- FIG. E. = R.S.A. 13711.
- FIG. F. = R.S.A. 13712.
- FIG. G. = R.S.A. 13713.
- FIG. H. = R.S.A. 13714.
- FIG. J. = R.S.A. 13716.
- FIG. L. = R.S.A. 13717.
- FIG. M. = R.S.A. 13718.
- FIG. N. = R.S.A. 13719.
- FIG. O. = R.S.A. 13726.

NOTE. FOR ONE ARM GROUND SIGNAL LADDER IF MAST IS SWAGED USE STAY COMPLETE FIG. J, IF WELDED AS PER 167-97 FIG. C. USE FIG. K.

G. N. RY.
PLAN OF STANDARD
**LADDER CLAMPS & STAYS FOR
ELECTRICAL GROUND AND
BRIDGE OR CRACKET SIGNALS**

OFFICE OF SIGNAL ENGINEER ST. PAUL, MINN.
SCALE 3" = 1'-0"
DEC. 1919

BILL OF MATERIAL

- | | |
|---|---|
| <p>FIG. J. STAY COMPLETE.
2 - 6 5/8" SWAGE-HALF STAY CLAMPS FIG. C.
2 - STAY SIDES FIG. E.
2 - 1/2" X 1 3/4" SQ. HD. BOLTS + NUTS.
2 - 1/2" X 1" SQ. HD. BOLTS + NUTS.
SEE NOTE.</p> <p>FIG. K. STAY COMPLETE.
2 - 6 5/8" HALF STAY CLAMPS FIG. B.
2 - STAY SIDES FIG. E.
2 - 1/2" X 1 3/4" SQ. HD. BOLTS + NUTS.
2 - 1/2" X 1" SQ. HD. BOLTS + NUTS.</p> <p>FIG. L. STAY COMPLETE.
2 - 6 5/8" HALF STAY CLAMPS FIG. B.
2 - STAY SIDES FIG. F.
2 - 1/2" X 1 3/4" SQ. HD. BOLTS + NUTS.
2 - 1/2" X 1" SQ. HD. BOLTS + NUTS.</p> | <p>FIG. M. STAY COMPLETE.
2 - 6 5/8" HALF STAY CLAMPS FIG. B.
2 - STAY SIDES FIG. G.
2 - 1/2" X 1 3/4" SQ. HD. BOLTS + NUTS.
2 - 1/2" X 1" SQ. HD. BOLTS + NUTS.</p> <p>FIG. N. STAY COMPLETE.
2 - 6 5/8" HALF STAY CLAMPS FIG. B.
2 - STAY SIDES FIG. H.
2 - 1/2" X 1 3/4" SQ. HD. BOLTS + NUTS.
2 - 1/2" X 1" SQ. HD. BOLTS + NUTS.</p> <p>FIG. O. STAY COMPLETE.
2 - 5 1/2" HALF STAY CLAMPS FIG. A.
2 - STAY SIDES FIG. D.
2 - 1/2" X 1 3/4" SQ. HD. BOLTS + NUTS.
2 - 1/2" X 1" SQ. HD. BOLTS + NUTS.</p> |
|---|---|

Drawn by R.A.
Checked by J.R.
Approved by [Signature]
Signal Engr.
1-7-20
167-103