

FIG. A. No. 1. TOP PLATFORM-GROUND SIGNAL-5" PIPE. OPEN HEARTH STEEL.

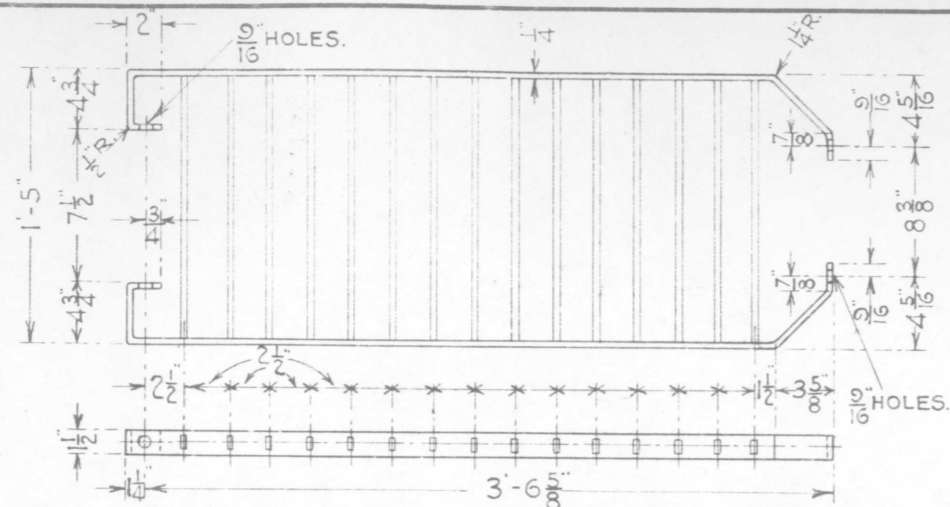


FIG. C. No. 2. PLATFORM-GROUND SIGNAL 6" PIPE (SWAGED). OPEN HEARTH STEEL.

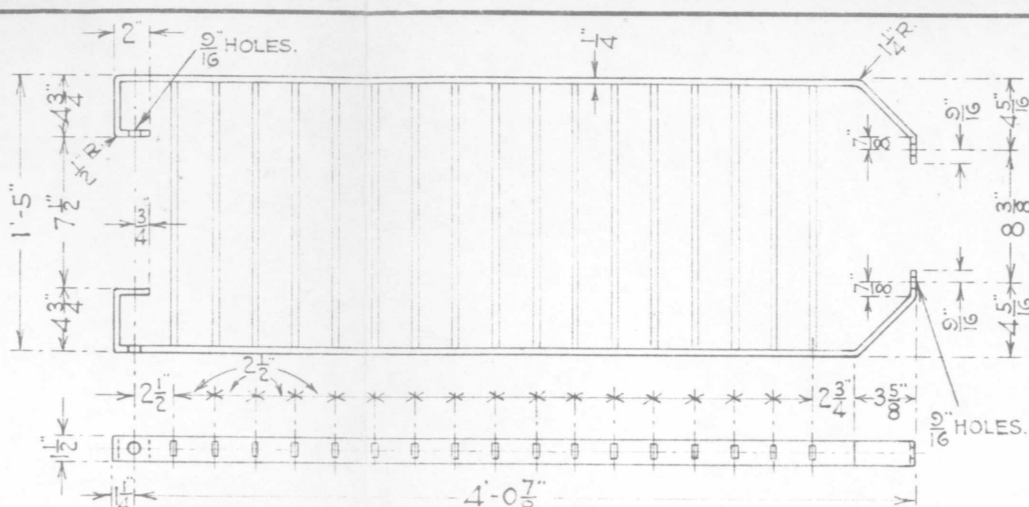


FIG. E. No. 3. PLATFORM-GROUND SIGNAL-6" PIPE (SWAGED). OPEN HEARTH STEEL.

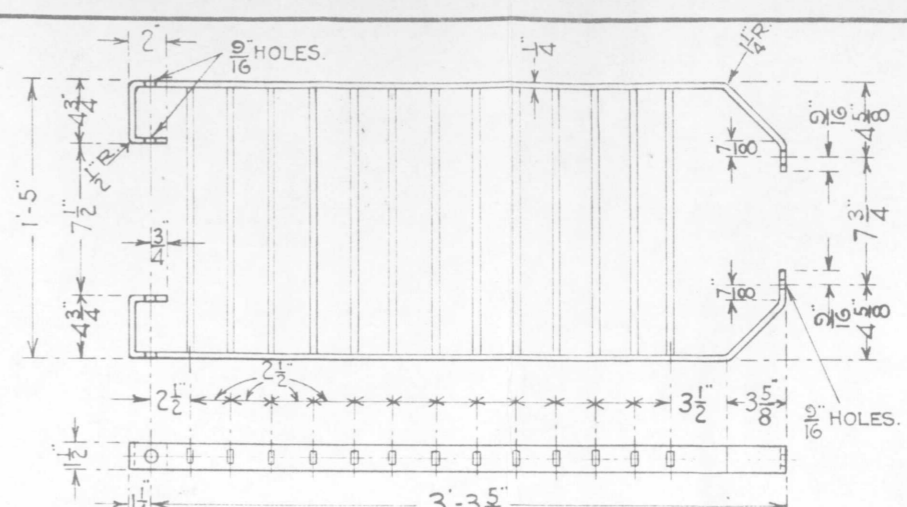


FIG. G. PLATFORM-BRIDGE & BRACKET SIGNAL. OPEN HEARTH STEEL.

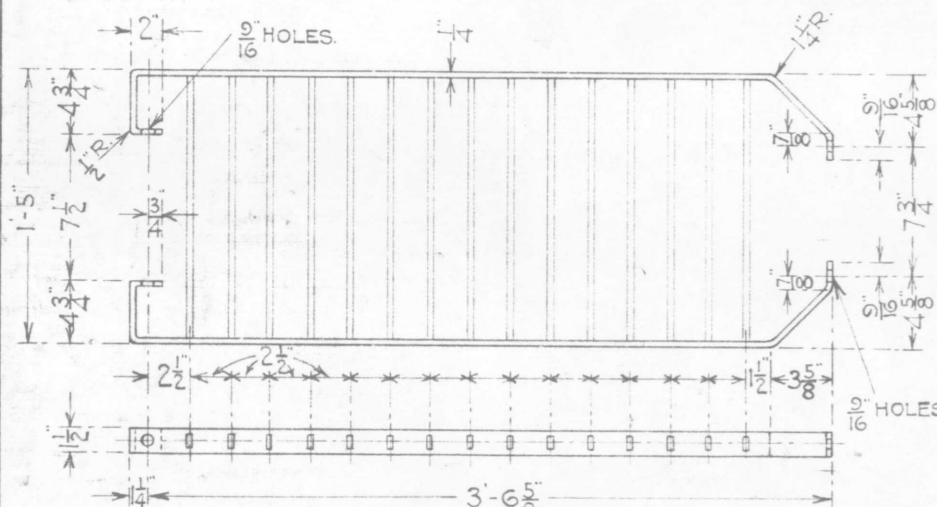


FIG. B. No. 2. PLATFORM-GROUND SIGNAL-5" PIPE. OPEN HEARTH STEEL.

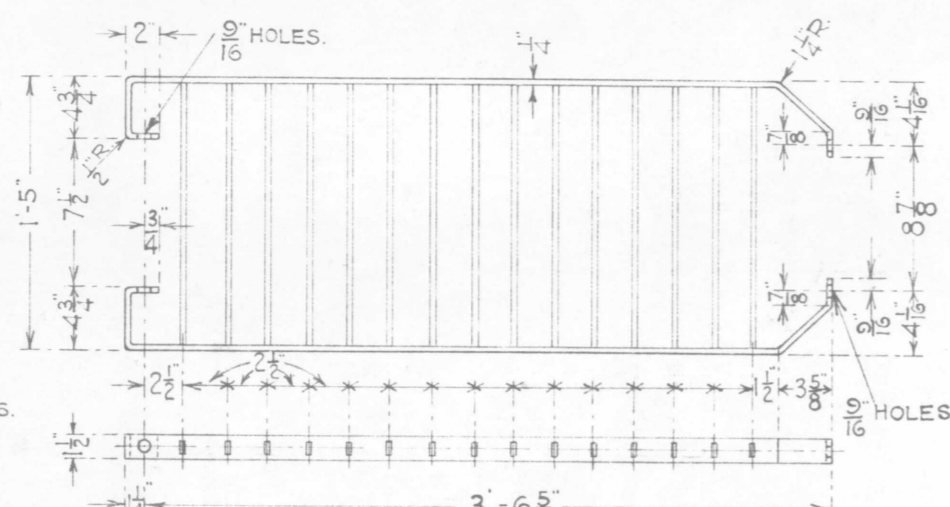


FIG. D. No. 2. PLATFORM-GROUND SIGNAL-6" PIPE. OPEN HEARTH STEEL.

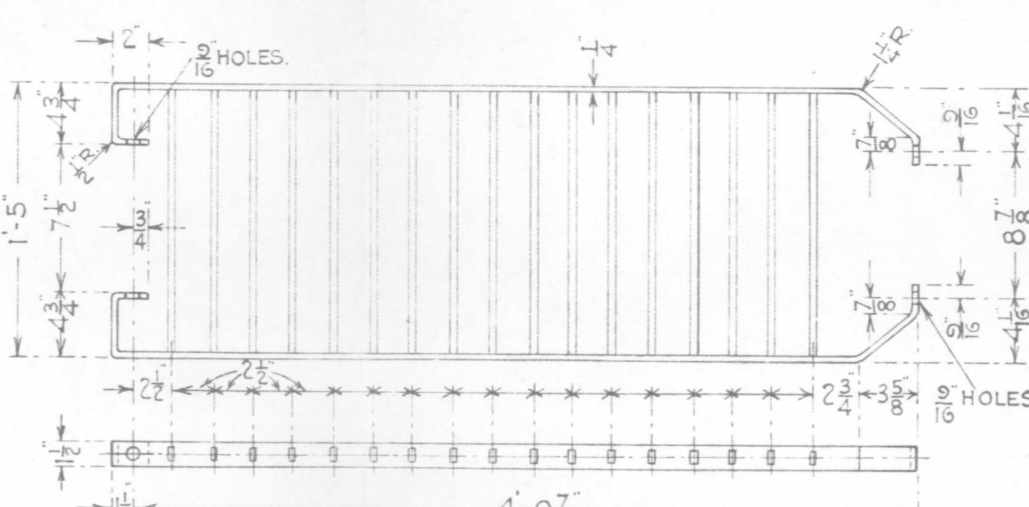
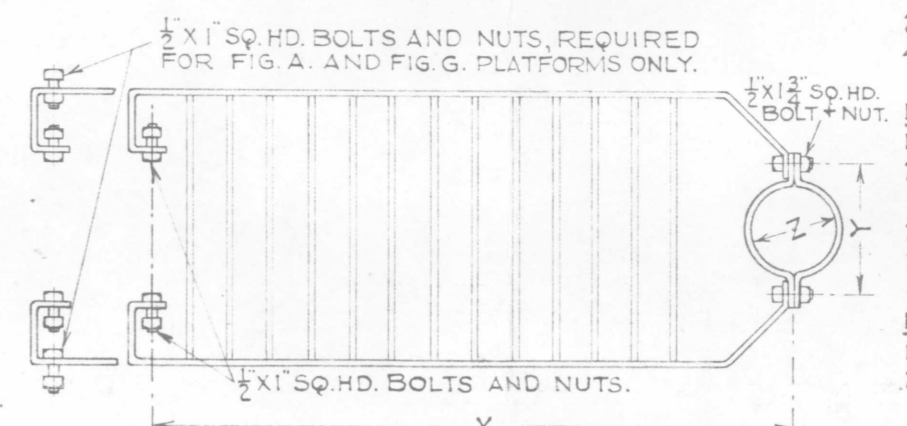


FIG. F. No. 3. PLATFORM-GROUND SIGNAL-6" PIPE. OPEN HEARTH STEEL.



PLATFORM COMPLETE.

- FIG. J. - X = 3'-0". Y = 7". Z = 5 1/2"
- FIG. K. - X = 3'-7". Y = 7". Z = 5 1/2"
- FIG. L. - X = 3'-7". Y = 8". Z = 6"
- FIG. M. - X = 3'-7". Y = 8". Z = 6"
- FIG. N. - X = 4'-1 1/2". Y = 8". Z = 6"
- FIG. O. - X = 4'-1 1/2". Y = 8". Z = 6"
- FIG. P. - X = 3'-4". Y = 7". Z = 5 1/2"

NOTE A. FOR TWO ARM GROUND SIGNAL LADDER IF MAST IS SWAGED USE PLATFORM COMPLETE FIG. L, IF WELDED AS PER 167-97. FIG. B. USE FIG. M.

NOTE B. FOR THREE ARM GROUND SIGNAL LADDER IF MAST IS SWAGED USE PLATFORM COMPLETE FIG. N, IF WELDED AS PER 167-97. FIG. A. USE FIG. O.

BILL OF MATERIAL.

FIG. J. PLATFORM COMPLETE. 1- No. 1. TOP PLATFORM. FIG. A. 2- 5 1/2" HALF STAY CLAMPS-167-103. FIG. A. 2- 1/2" X 1 1/4" SQ. HD. BOLTS + NUTS. 4- 1/2" X 1" " " " "	FIG. N. PLATFORM COMPLETE. 1- No. 3. PLATFORM. FIG. E. 2- 6 5/8" SWAGE, HALF STAY-CLAMPS. 167-103. FIG. C. 2- 1/2" X 1 1/4" SQ. HD. BOLTS + NUTS. 2- 1/2" X 1" " " " "
FIG. K. PLATFORM COMPLETE. 1- No. 2. PLATFORM. FIG. B. 2- 5 1/2" HALF STAY CLAMPS-167-103. FIG. A. 2- 1/2" X 1 1/4" SQ. HD. BOLTS + NUTS. 2- 1/2" X 1" " " " "	FIG. O. PLATFORM COMPLETE. 1- No. 3. PLATFORM. FIG. F. 2- 6 5/8" HALF STAY CLAMPS-167-103. FIG. B. 2- 1/2" X 1 1/4" SQ. HD. BOLTS + NUTS. 2- 1/2" X 1" " " " "
FIG. L. PLATFORM COMPLETE. 1- No. 2. PLATFORM. FIG. C. 2- 6 5/8" SWAGE, HALF STAY-CLAMPS. 167-103. FIG. C. 2- 1/2" X 1 1/4" SQ. HD. BOLTS + NUTS. 2- 1/2" X 1" " " " "	FIG. P. PLATFORM COMPLETE. 1- PLATFORM. FIG. G. 2- 5 1/2" HALF STAY CLAMPS-167-103. FIG. A. 2- 1/2" X 1 1/4" SQ. HD. BOLTS + NUTS. 4- 1/2" X 1" " " " "

SEE NOTE A.
FIG. M. PLATFORM COMPLETE.
1- No. 2. PLATFORM. FIG. D.
2- 6 5/8" HALF STAY CLAMPS-167-103. FIG. B.
2- 1/2" X 1 1/4" SQ. HD. BOLTS + NUTS.
2- 1/2" X 1" " " " "

Drawn by: *F. H. T.*
Checked by: *J. R. C.*
Approved by: *J. R. C.*
Signal Engr.

1-5-20.

167-104

- FIG. A. = R.S.A. 13643.
- FIG. B. = R.S.A. 13646.
- FIG. C. = R.S.A. 13649.
- FIG. E. = R.S.A. 136412.
- FIG. G. = R.S.A. 136415.
- FIG. H. = R.S.A. 13641.
- FIG. J. = R.S.A. 13644.
- FIG. K. = R.S.A. 13647.
- FIG. L. = R.S.A. 136410.
- FIG. N. = R.S.A. 136413.
- FIG. P. = R.S.A. 136416.

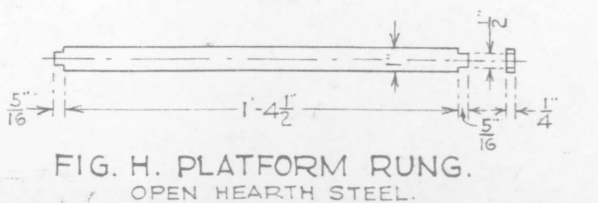


FIG. H. PLATFORM RUNG. OPEN HEARTH STEEL.