

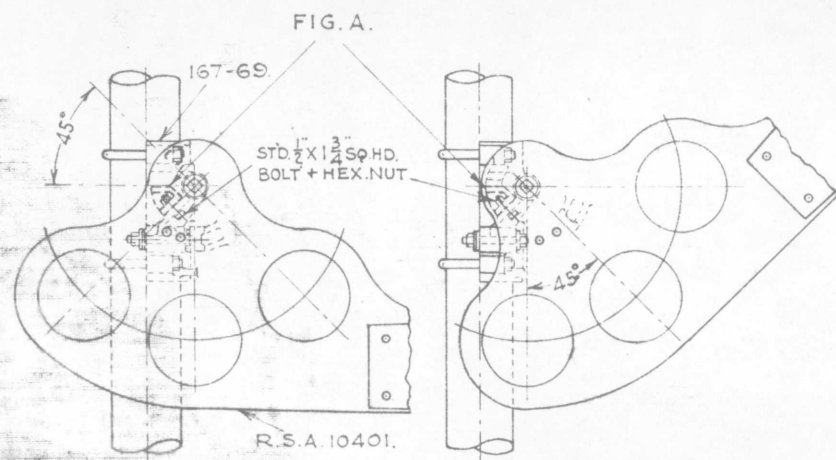
G. N. RY.

PLAN OF STANDARD  
FILLER BLOCK FOR

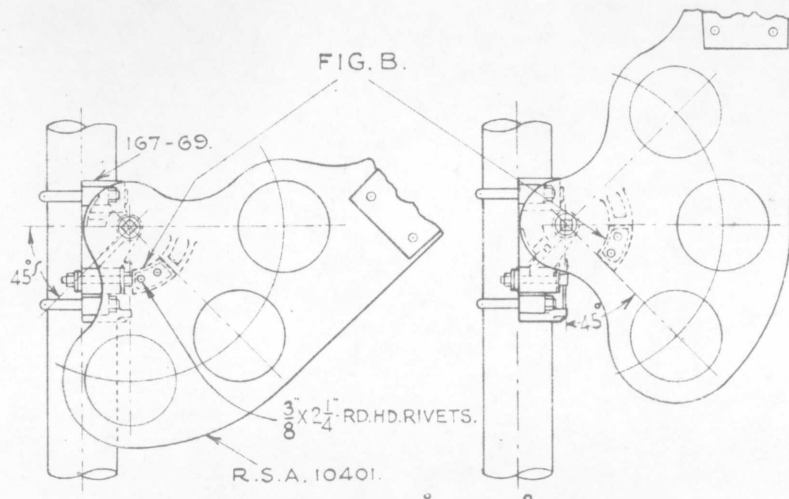
**MECHANICAL SEMAPHORE SPECTACLE**

OFFICE OF SIGNAL ENGINEER ST. PAUL, MINN.  
SCALE 6 IN. = 1 FT. APRIL 1920.

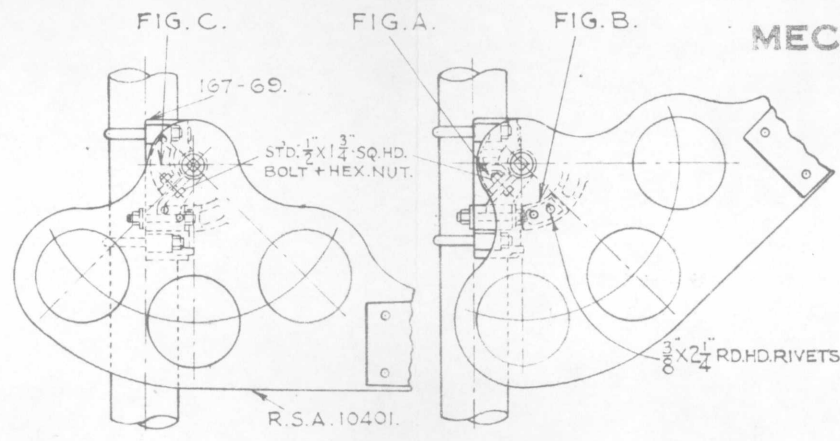
C



APPLICATION FOR 0° TO 45° TRAVEL



APPLICATION FOR 45° TO 90° TRAVEL.



APPLICATION FOR FIXED ARMS.

NOTE. FILLER BLOCKS ARE USED TO LIMIT OR PREVENT TRAVEL OF SIGNAL ARMS.

MATERIAL REQUIRED.

- (1) FOR 0° TO 45° TRAVEL OF ARM.  
1-FILLER BLOCK FIG. A.  
1-1/2 X 1/2 SQ. HD. BOLT + HEX. NUT.
- (2) FOR 45° TO 90° TRAVEL OF ARM.  
1-FILLER BLOCK FIG. B.  
2-3/8 X 2/4 RD. HD. RIVETS.
- (3) FOR FIXED ARM IN 0° POSITION.  
1-FILLER BLOCK FIG. C.  
1-1/2 X 1/2 SQ. HD. BOLT + HEX. NUT.
- (4) FOR FIXED ARM IN 45° POSITION.  
1-FILLER BLOCK FIG. A.  
1-FILLER BLOCK FIG. B.  
1-1/2 X 1/2 SQ. HD. BOLT + HEX. NUT.  
2-3/8 X 2/4 RD. HD. RIVETS.

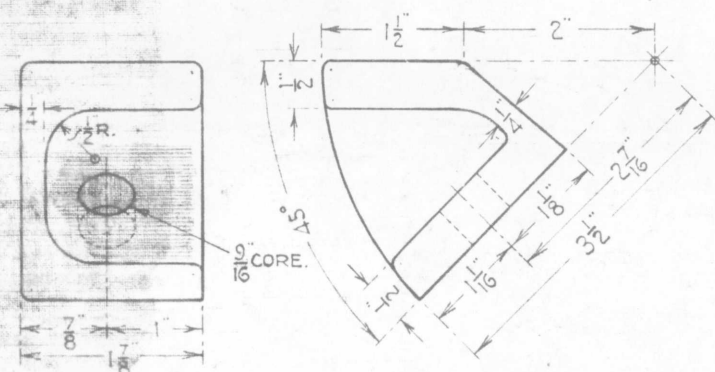


FIG. A. FILLER BLOCK.  
(CAST IRON)  
PATT. No. R 4260

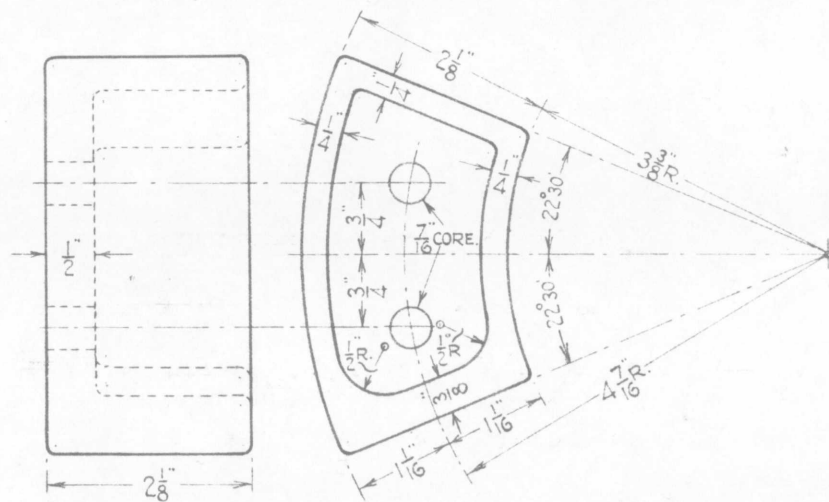


FIG. B. FILLER BLOCK.  
(CAST IRON)  
PATT. No. R 4261

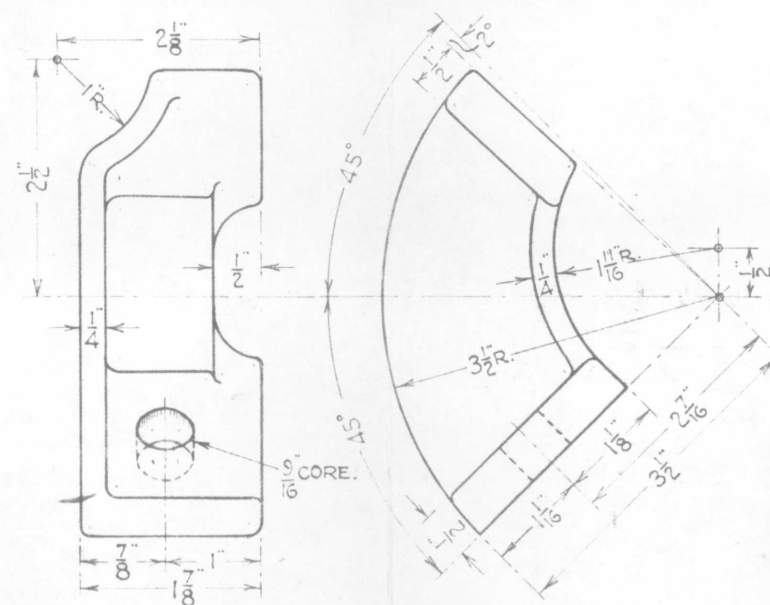


FIG. C. FILLER BLOCK.  
(CAST IRON)  
PATT. No. R 4262

FIG. A. = R.S.A. 10901.  
FIG. B. = R.S.A. 10911.  
FIG. C. = R.S.A. 10921.

Drawn by *Stall*  
Checked by *FBR*  
Approved by *CS*  
Signal Engr.  
4-12-20

167-110