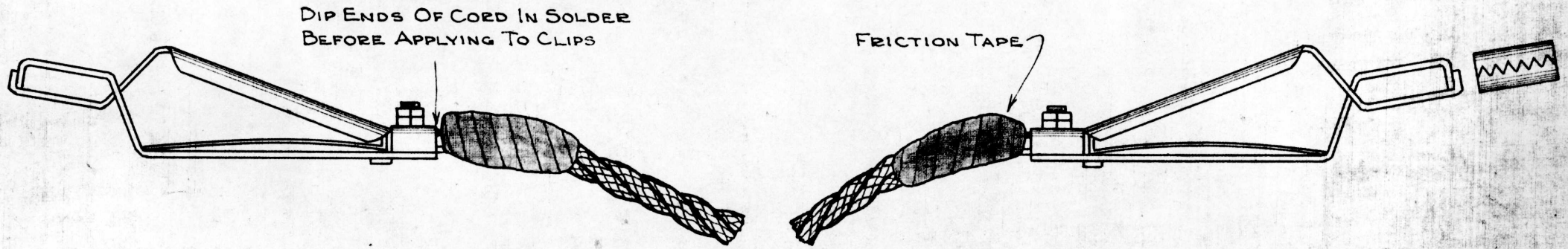


B

G. N. RY.
 PLAN OF STANDARD
TRACK SHUNT CONNECTOR
 OFFICE OF SUPT OF SIGNALS, ST. PAUL, MINN.
 SCALE FULL SIZE SEPT, 1927



NOTE: 20FT. OF No.14 COTTON COVERED LAMP CORD
 WITH 200-AMPERE UNIVERSAL TEST CLIPS

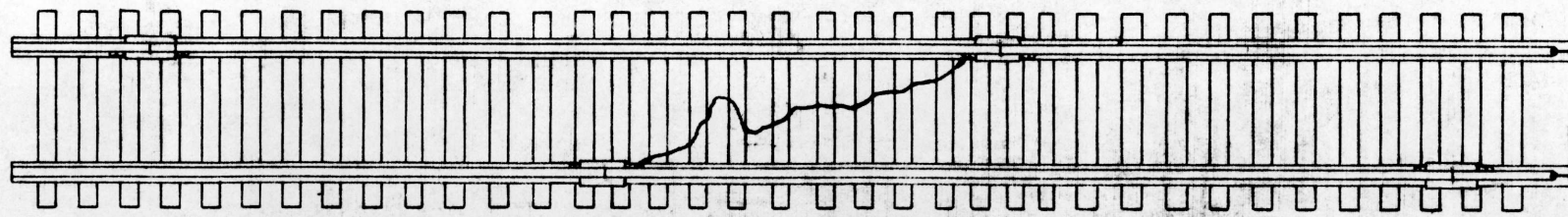


DIAGRAM SHOWING HOW TO CONNECT
 SHUNT WIRE TO BOND WIRES

SCRAPE BOND WIRE WITH CLIP TO INSURE GOOD CONTACT

DRAWN BY	189
CHECKED BY	<i>[Signature]</i>
APPROVED BY	<i>[Signature]</i>
SUPT. SIGNALS	
9-28-27	
167-118C	

REV. 3-14-57