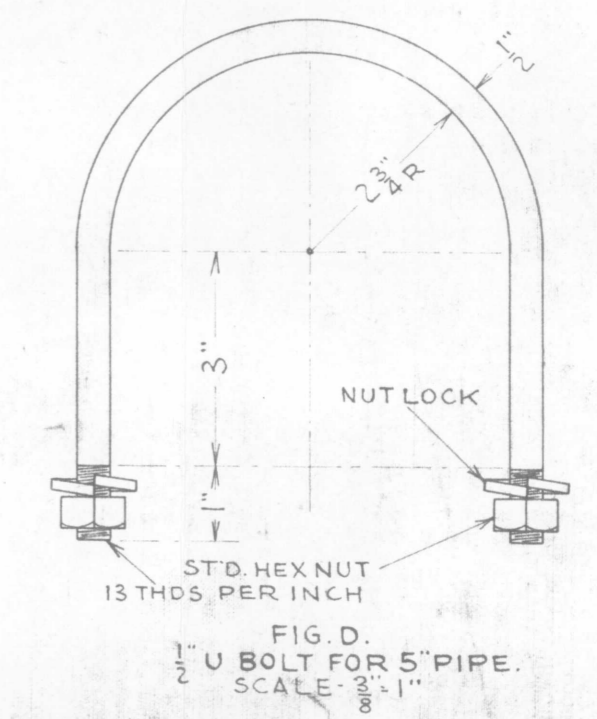
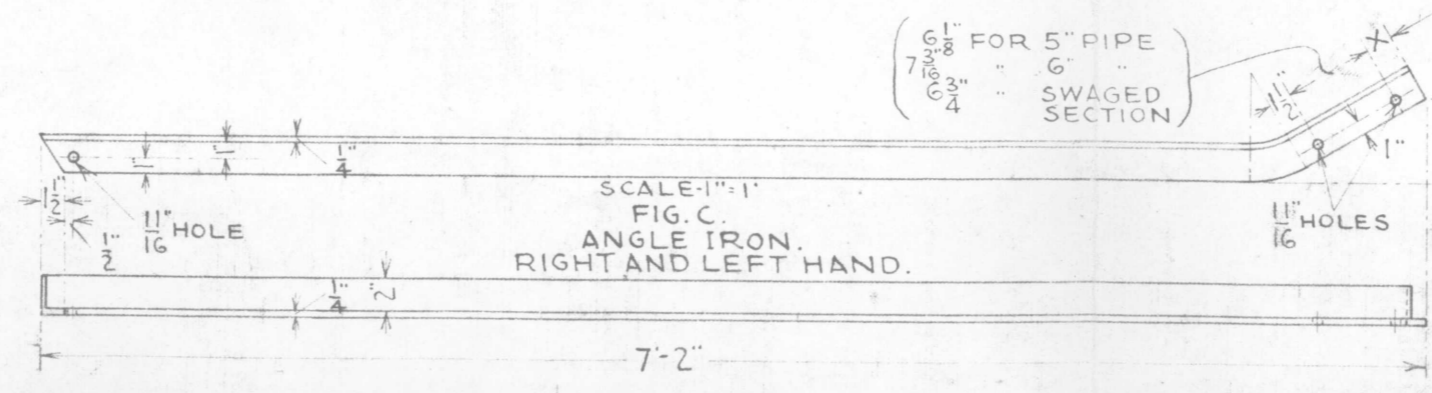
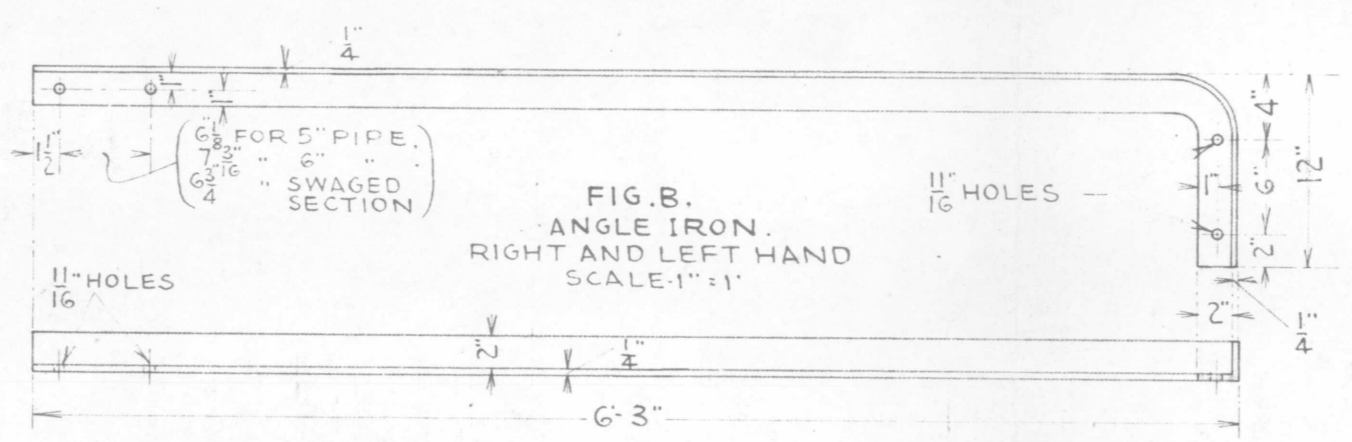
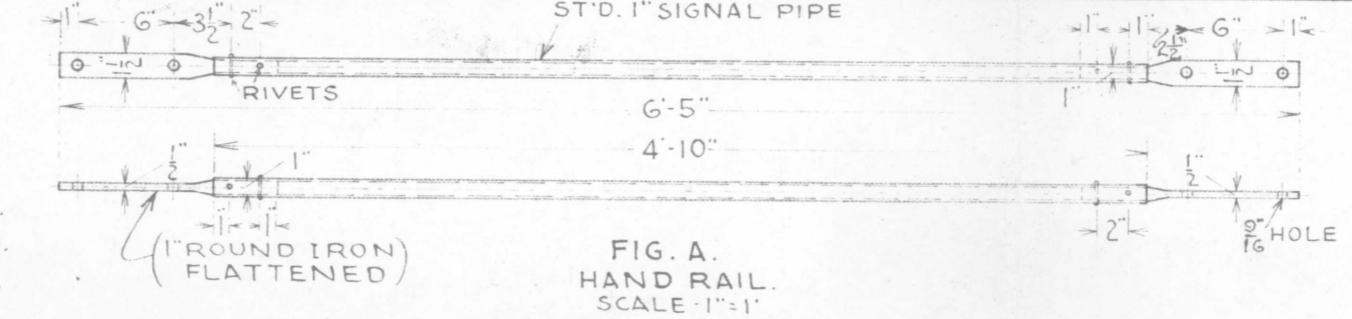


BILL OF MATERIAL

NO. REQD	NAME OF ITEM	ITEM NO.	NO. REQD	NAME OF ITEM	ITEM NO.
1	PIECE STD 5" PIPE 7'0" LONG WITH TWO 1/16" HOLES DRILLED AS SHOWN ON ASSEMBLY	1	1	R.H. ANGLE-IRON AS PER FIG. B	8
1	PINNACLE AS PER 167-70, FIG. A	2	1	L.H. " " " " " " " " C	9
1	MARKER DISC, COMPLETE, FOR 5" PIPE - LESS ROUNDEL	3	1	R.H. " " " " " " " " C	10
1	LAMP BRACKET, COMPLETE, AS PER 167-58, FIG. K	4	4	L.H. " " " " " " " " C	11
1	#9 LAMP FITTED WITH 5/8" PURPLE LENSE (LESS OIL-FOUNT)	5	2	5/8 x 7 1/2" SQ. HD. BOLTS WITH NUTS + LOCK WASHERS	12
1	HAND-RAIL AS PER FIG. A	6	1	" " 8 1/2" " " " " " " " " C	13
2	U-BOLTS COMPLETE AS PER FIG. D.	7	1	LAMP ADAPTER COMPLETE AS PER 167-127	14



(WITH FIG. B. ON 5" PIPE + FIG. C. ON 5" PIPE MAKE X = 1 1/2")
 " " " 5" " " " 6" " " X = 1"
 " " " (SWAGED JOINT) " " 6" " " X = 1 1/2"
 8-21-23 REVISED

G. N. RY.
PLAN OF STANDARD
CANTILEVER BRACKET

OFFICE OF SIGNAL ENGINEER ST. PAUL, MINN.
SCALE VARIOUS FEB 1921

DRAWN BY: <i>Rg</i>
CHECKED BY: <i>JBR</i>
APPROVED BY: <i>Co</i> SIGNAL ENGR
2-2-21
167-121