

GNRHS Archives 2018

G. N. RY. PLAN OF STANDARD SIGNAL SEAL

*ATTACH to
COPY-REQ.
98L-0688
Mott-Morgan
Vancouver*

OFFICE OF SIGNAL ENGINEER ST. PAUL, MINN.

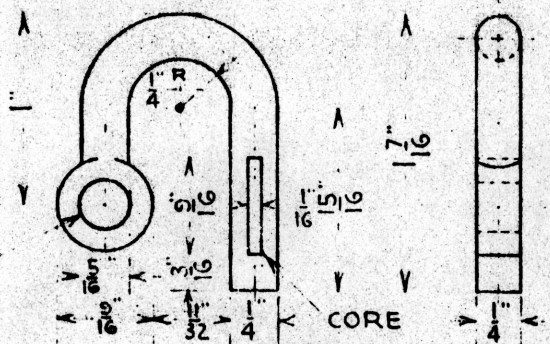
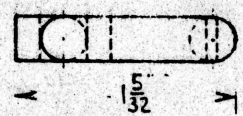


FIG. A.
STAPLE
(CAST IRON)
PATT. NO. R-4493

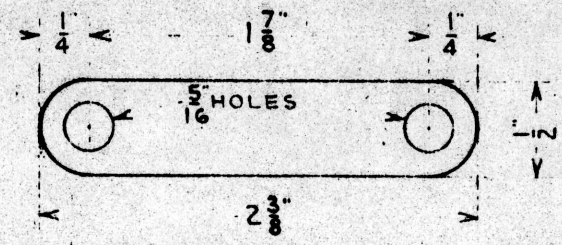
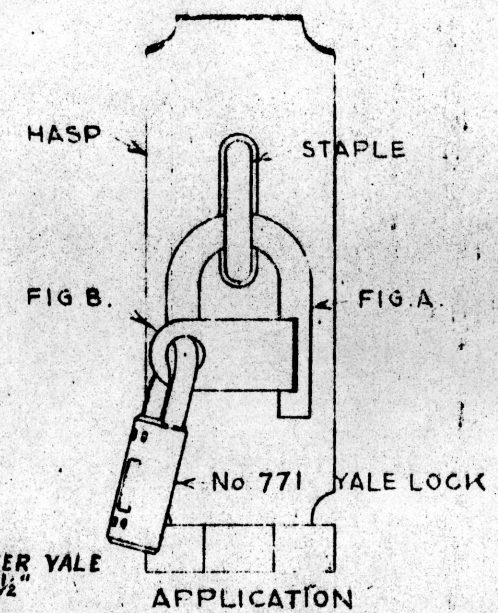


FIG. B.
SEAL
(SHEET LEAD)



"GRAND MASTER YALE
KEY NO. 24 1/2"

DRAWN BY *R6*
CHECKED BY *JBC*
APPROVED BY *Ed*
SIGNAL ENGINEER

2-11-21

3/21/30 | REV.

167-123