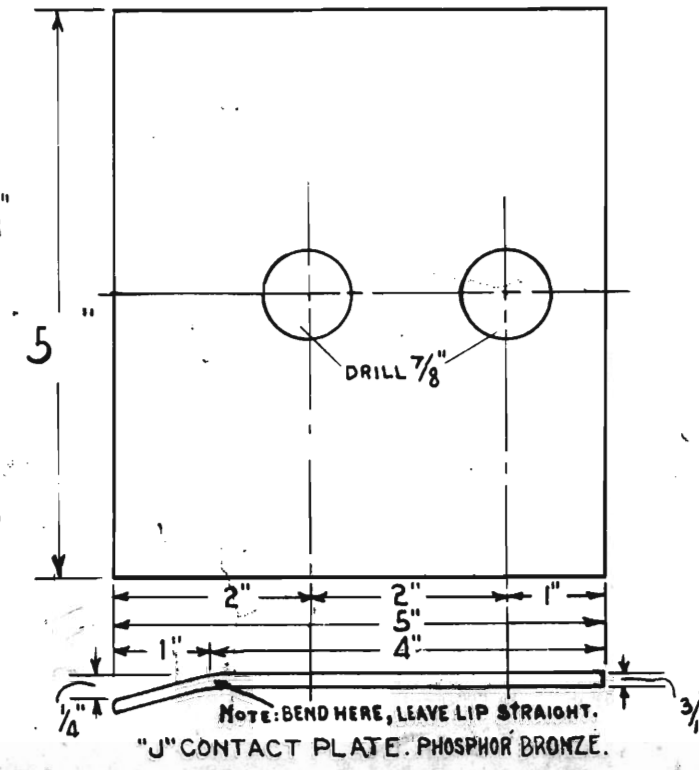
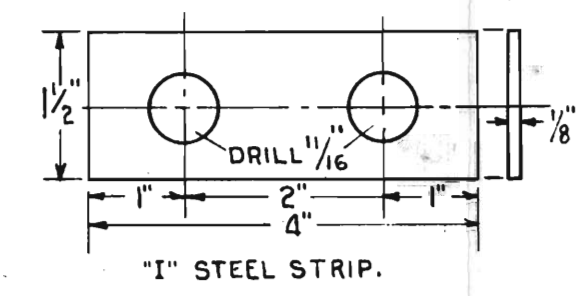
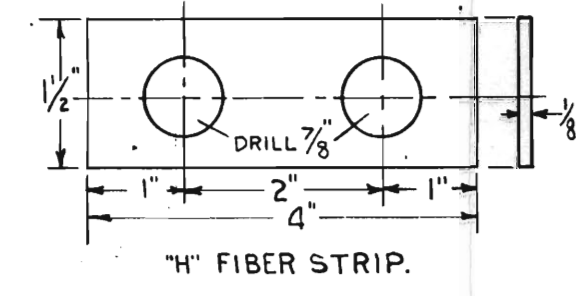
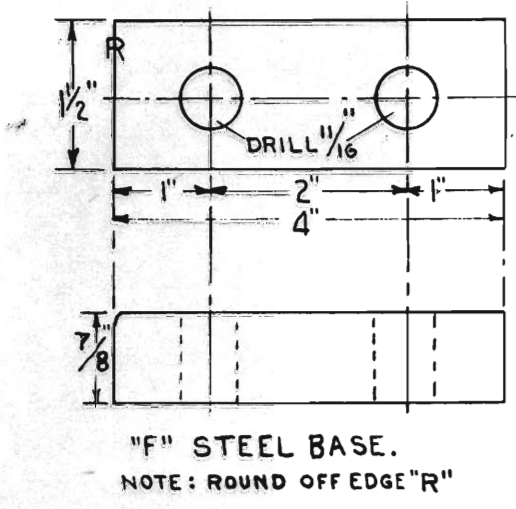
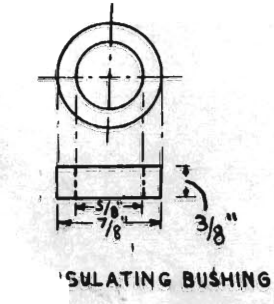
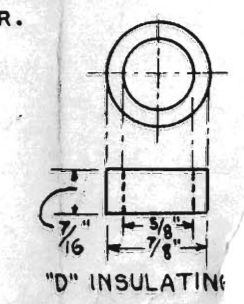
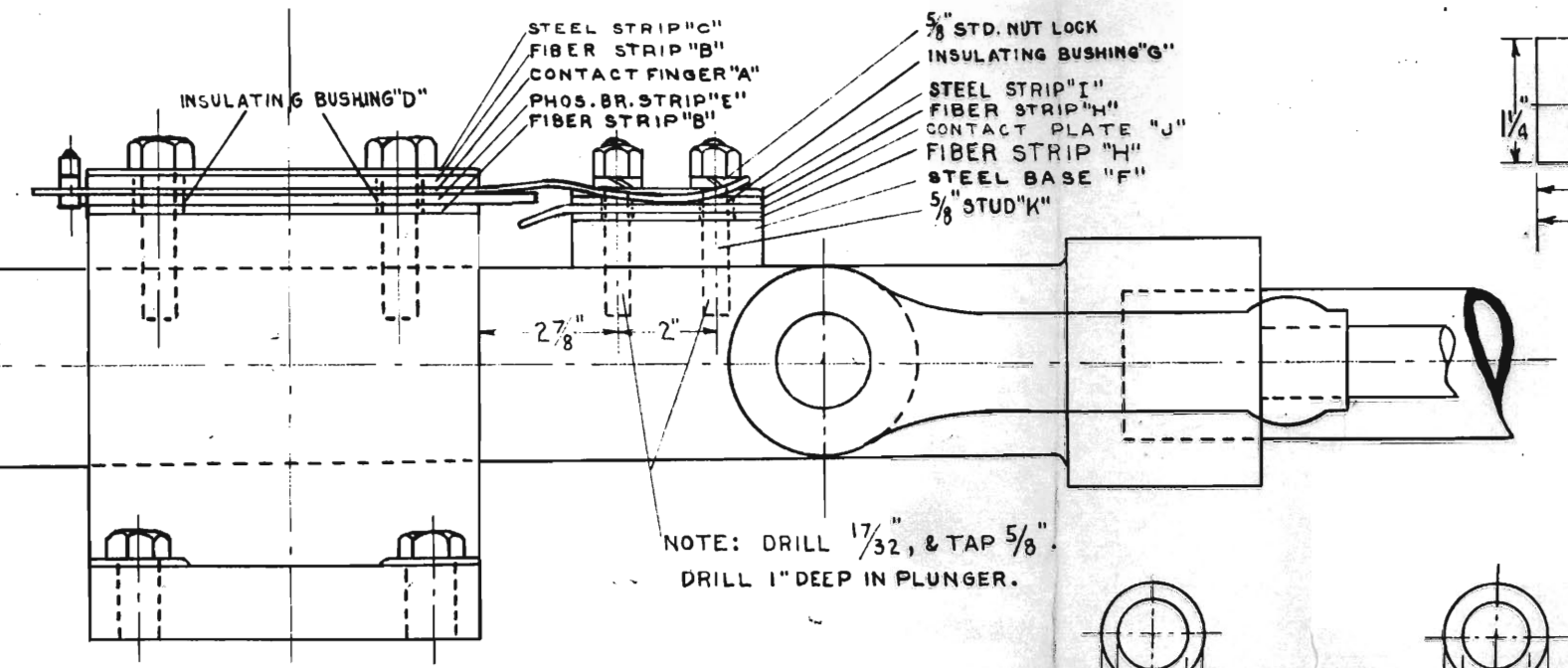
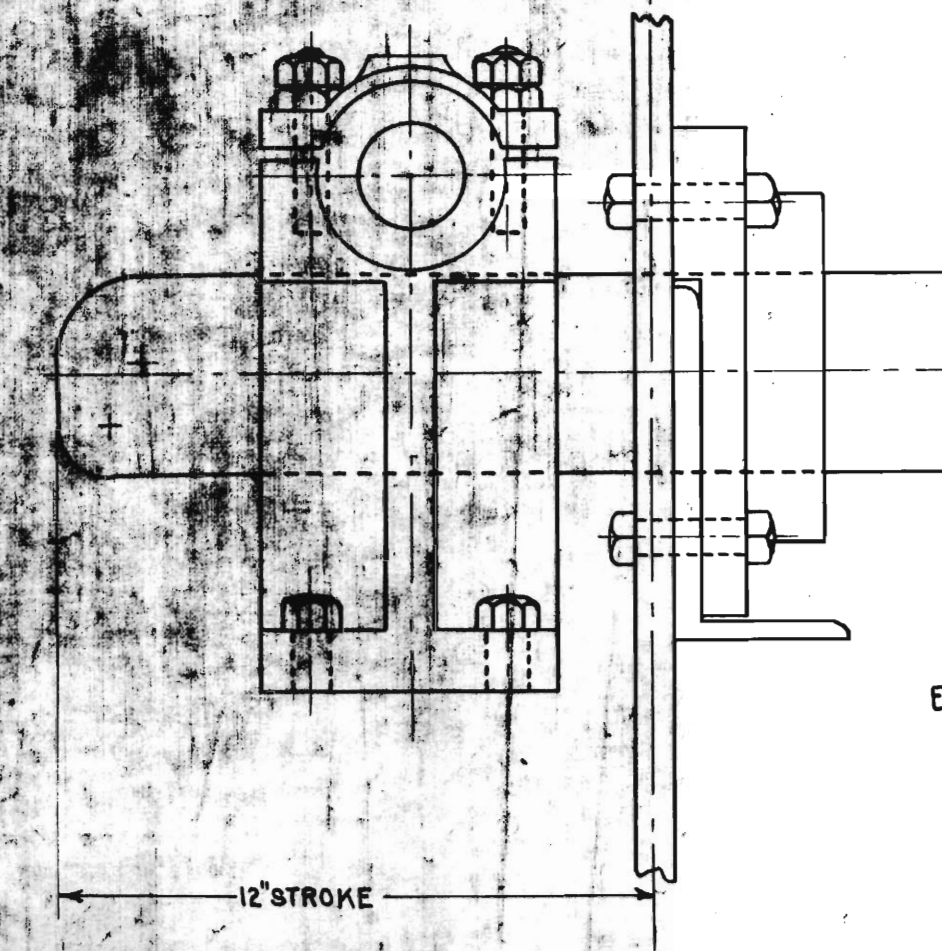
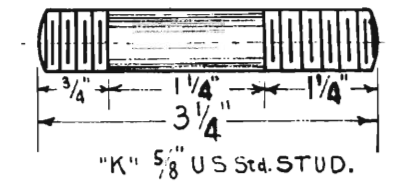
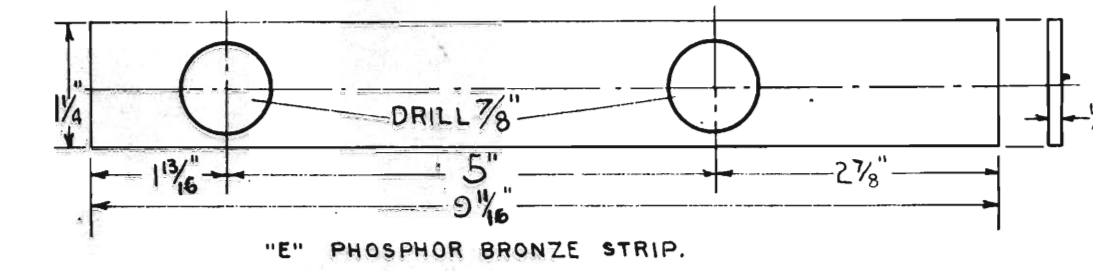
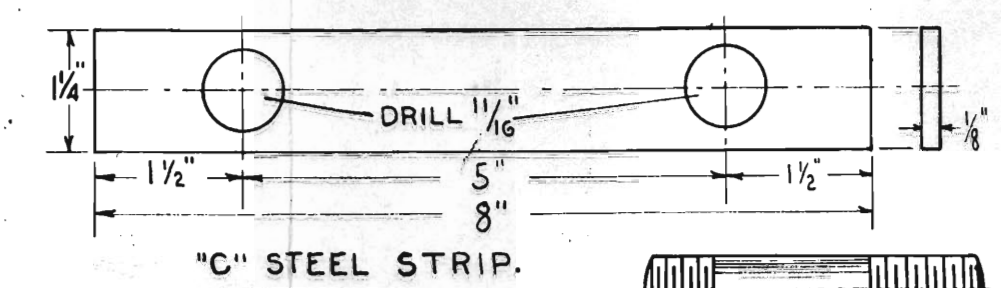
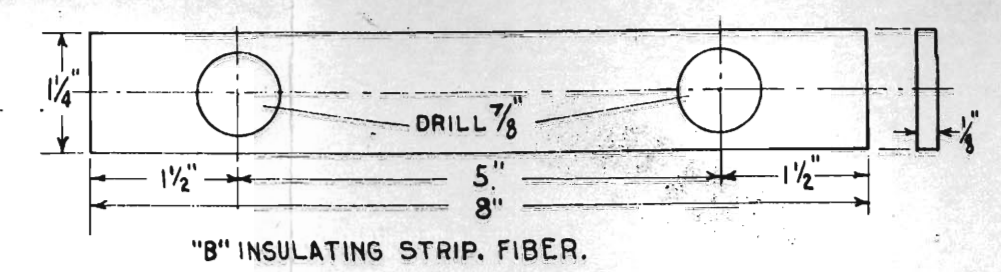
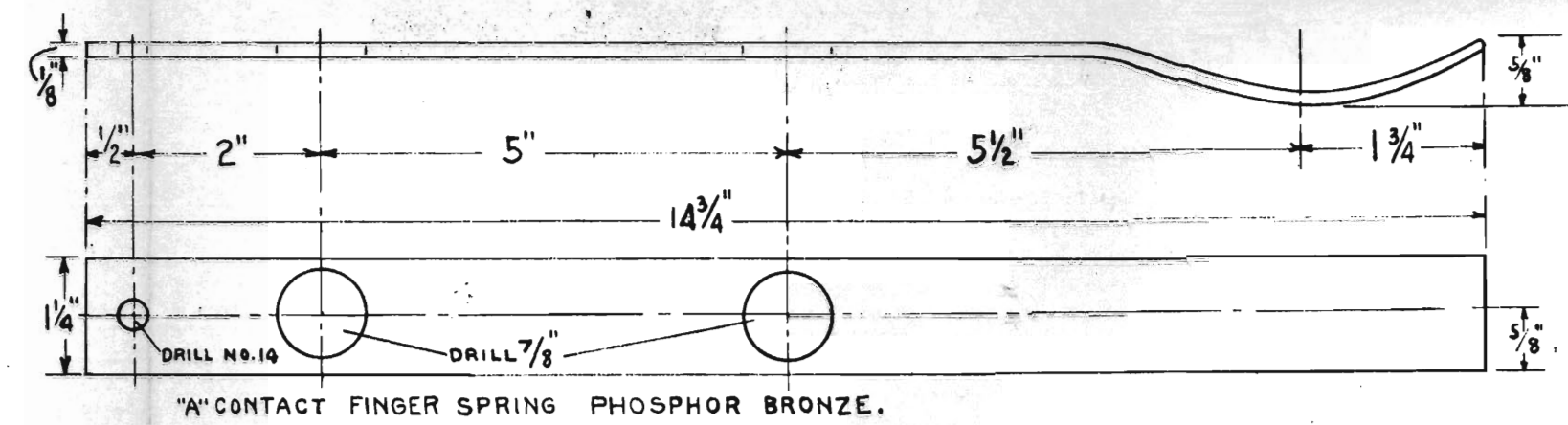
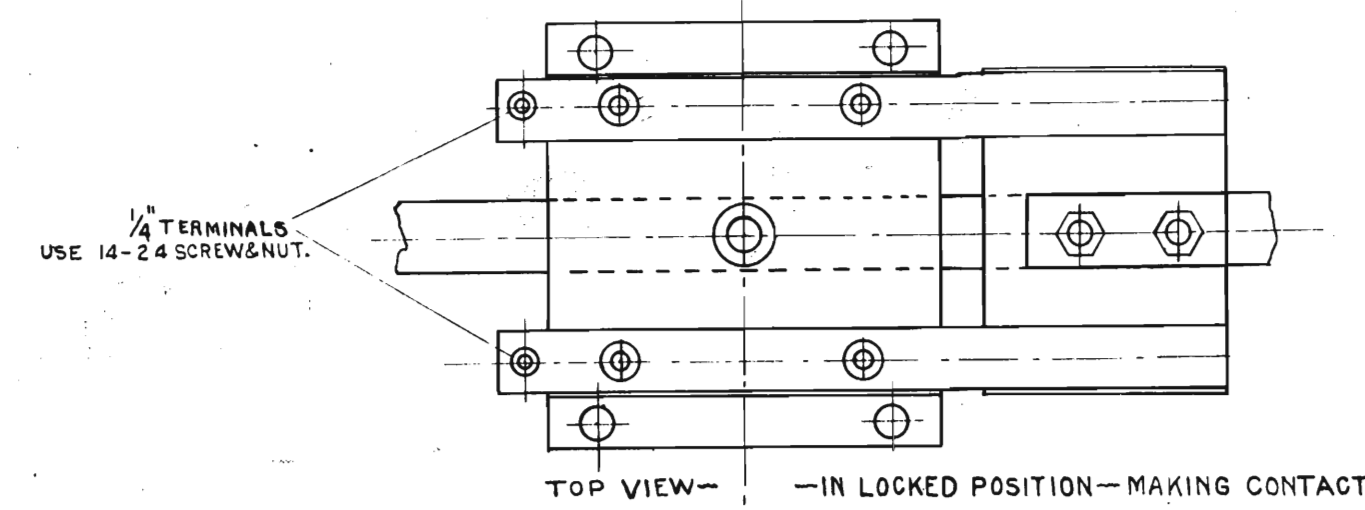


G. N. RY.
 PLAN OF STANDARD
END LOCK CIRCUIT CONTROLLER
 OFFICE OF SIGNAL ENGINEER ST. PAUL, MINN.
 SCALE VARIOUS. APRIL 1922



BILL OF MATERIAL.	
2	CONTACT FINGER SPRINGS "A"
4	INSULATING FIBER STRIP "B"
2	STEEL STRIPS "C"
4	INSULATING FIBER BUSHING "B"
2	PHOSPHOR BRONZE STRIP "E"
1	STEEL BASE "F"
2	INSULATING FIBER BUSHING "G"
2	INSULATING FIBER STRIPS "H"
1	STEEL STRIP "I"
1	CONTACT PLATE "J"
2	5/8" US STANDARD STUD "K"
2	5/8" US STANDARD HEX NUTS
2	5/8" LOCK WASHERS. RSA No. 10704
2	14-24 X 1 1/2" BRASS SCREWS, FULL THREAD
2	14-24 BRASS FLAT HEX NUTS. RSA No. 10702
4	1/4" BRASS WASHERS. RSA No. 10703
4	RSA BRASS BINDING NUTS. No. 10701

Drawn By
 Checked By
 Approved By
 SIGNAL ENGR.
 MAR. 23 '22
 167-128