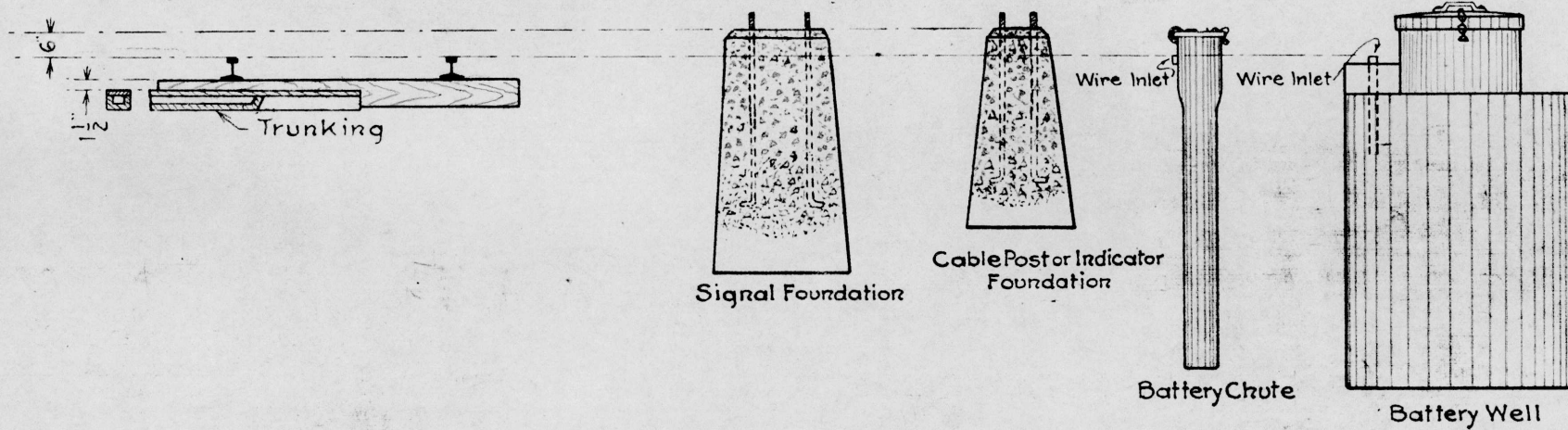


A

**G. N. RY.**  
**PLAN OF STANDARD ELEVATION**  
**FOR**  
**SIGNAL FOUNDATIONS, CHUTES**  
**AND BATTERY WELLS**  
**OFFICE OF SIGNAL ENGINEER**  
**JUNE 1913**

NOTE: WHERE CRUSHED ROCK BALLAST IS USED  
 SET TOP OF FOUNDATIONS LEVEL WITH  
 TOP OF RAIL.



**Note.**

Local conditions may in some cases make it necessary to depart from elevations shown. In all such cases the Signal Engineer or his representative will issue instructions to govern. Care must be exercised to locate foundations, wells etc. to avoid all unnecessary filling or grading.

Draw by *H.T.*  
 Checked by *H.B.*  
 Approved by *C.S.*  
 Signal Eng'r