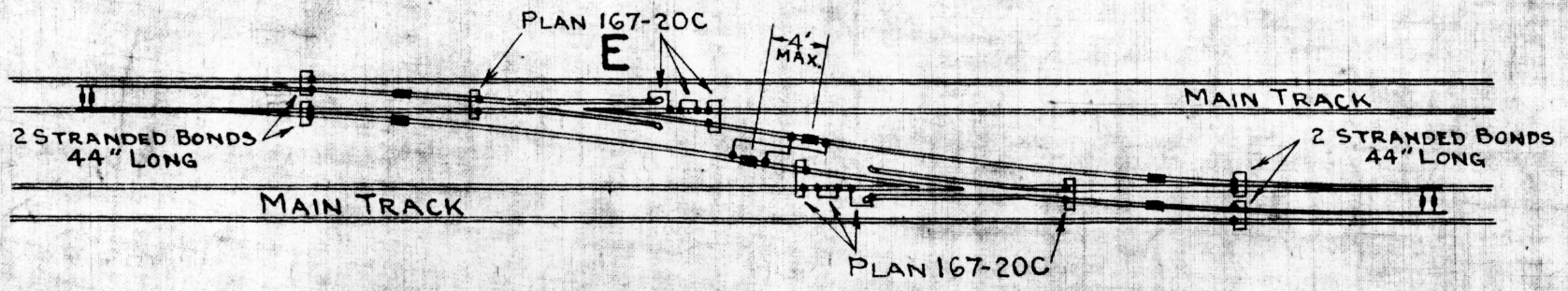
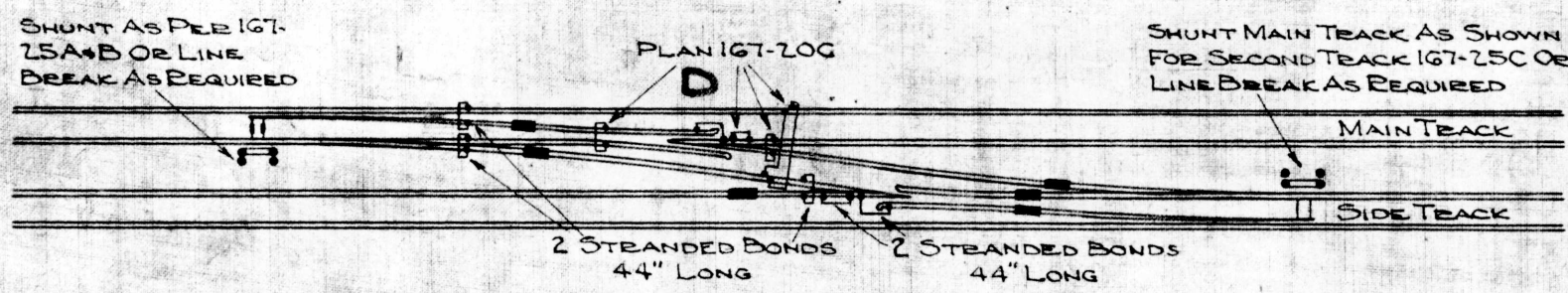
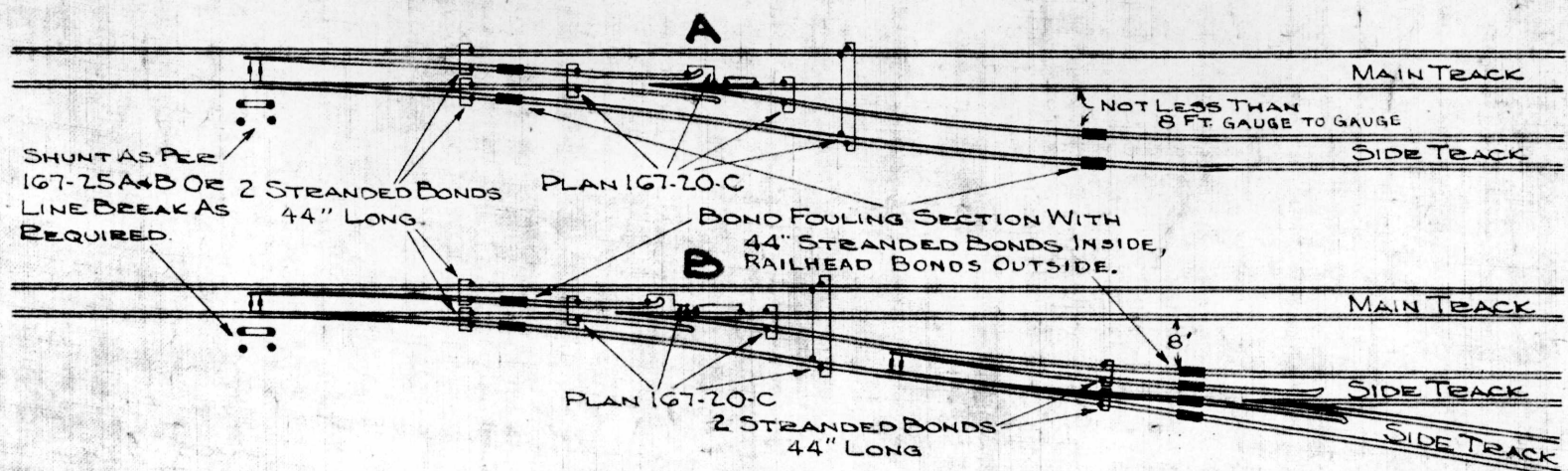


A



G. N. RY.
PLAN OF STANDARD
BONDING & INSULATION
FOR
SWITCHES & CROSSOVERS

OFFICE OF SUPT. OF SIGNALS ST. PAUL, MINN.
 NO SCALE
 NOV. 1928

DRAWN BY *289*
 CHECKED BY *300*
 APPROVED BY *cat*
 SUPT. SIGNALS
 11-5-28

3-28-51 REV. 167-134A