

C

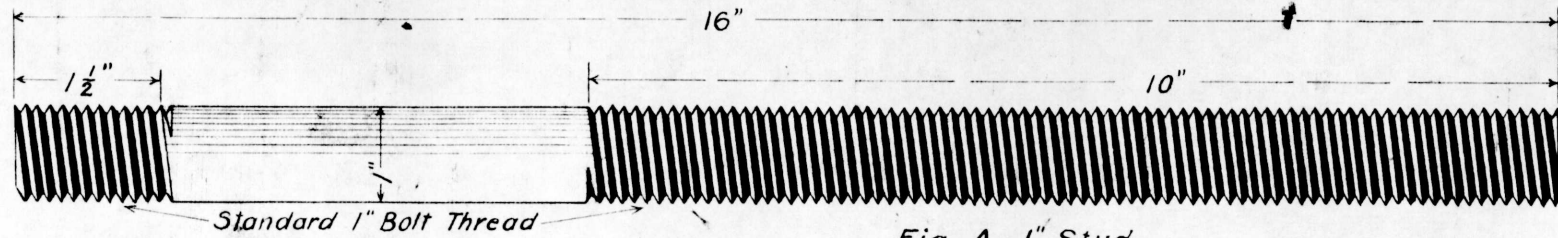


Fig. A. 1" Stud
(O.H. Steel)

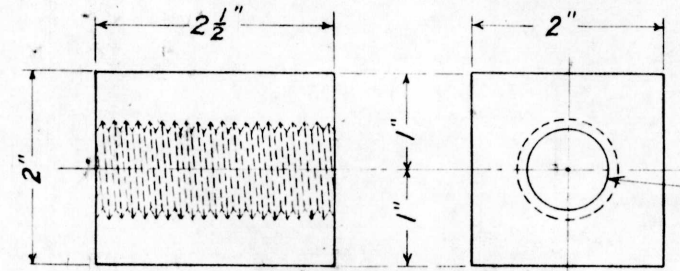


Fig. B. 1" Special Nut
(O.H. Steel)

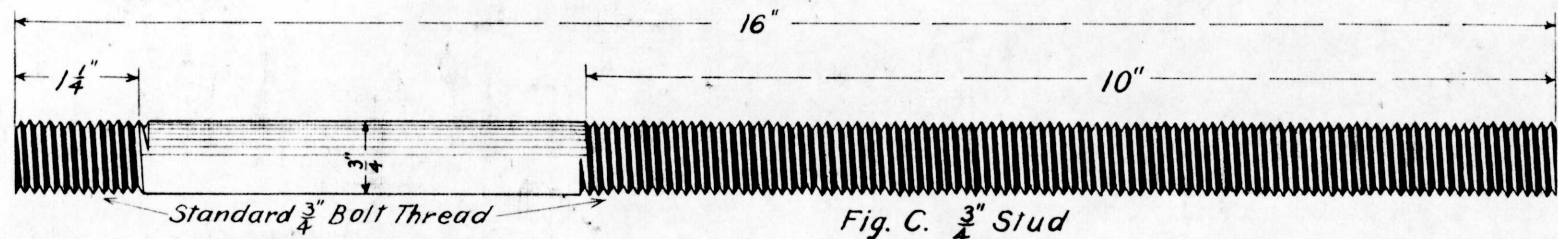


Fig. C. 3/4" Stud
(O.H. Steel)

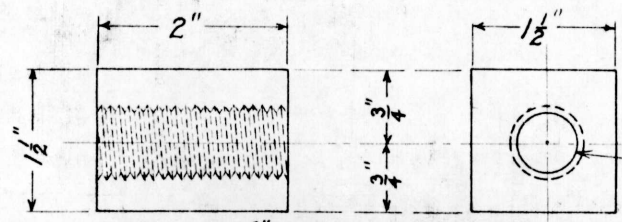


Fig. D. 3/4" Special Nut
(O.H. Steel)

G. N. RY.
 PLAN OF STANDARD
 STUDS AND SPECIAL NUTS
 FOR RAISING SIGNALS AND
 CABLE POSTS

OFFICE OF SIGNAL ENGINEER ST. PAUL MINN.
 SCALE 1/2"=1" JUNE 1923

This Plan Supersedes
 Sketch # 11

Drawn by G.S.
 Checked by C.B.C.
 Approved by [Signature]
 Signal Eng'r.
 JUNE 1923
 167-135