

FIG. A. TWO-FIGURE BRACKET

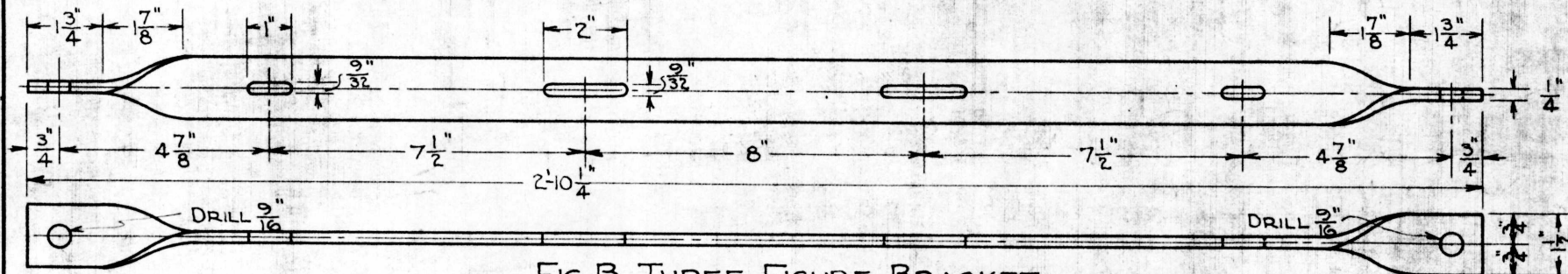


FIG. B. THREE-FIGURE BRACKET

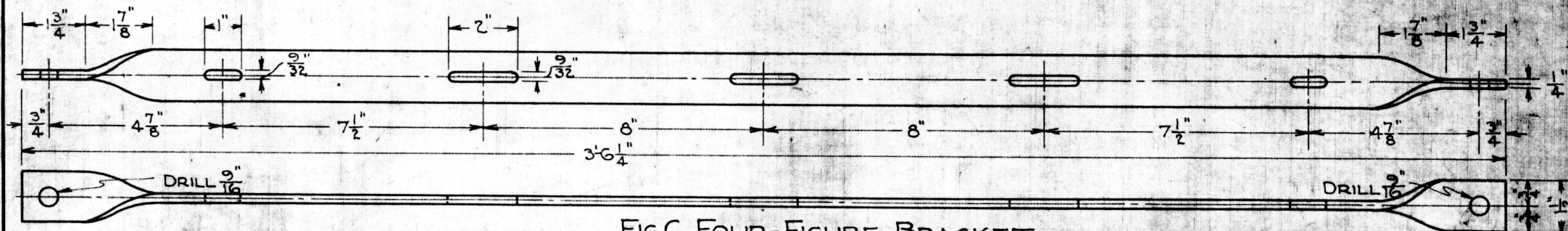


FIG. C. FOUR-FIGURE BRACKET

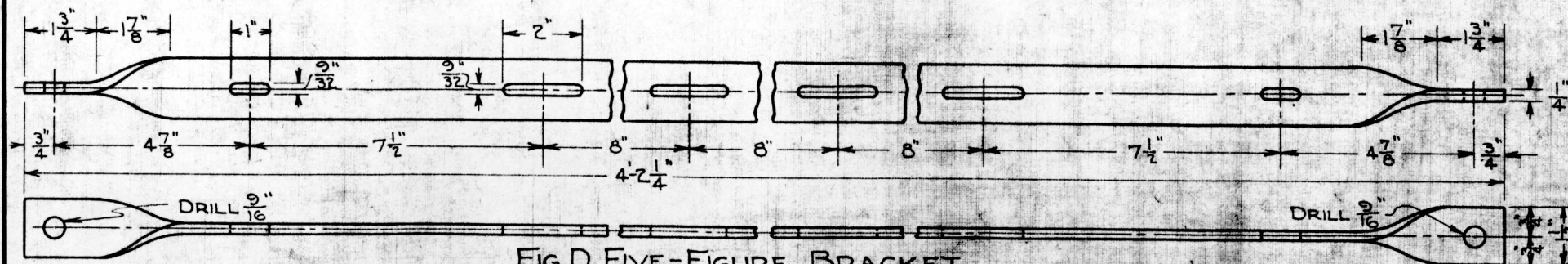


FIG. D. FIVE-FIGURE BRACKET

G. N. RY.
 PLAN OF STANDARD
NUMBER PLATE BRACKET.
 OFFICE OF SUPT. OF SIGNALS, ST. PAUL, MINN.
 SCALE: 3"=1'
 MAY, 1924.

NOTE: USE CLAMPS SHOWN
 ON DRG. No. 167-103.

DRAWN BY SRM.
 CHECKED BY CBO.
 APPROVED BY C.A.D.
 SUPT. OF SIGNALS
 MAY 3-1924
 167-138