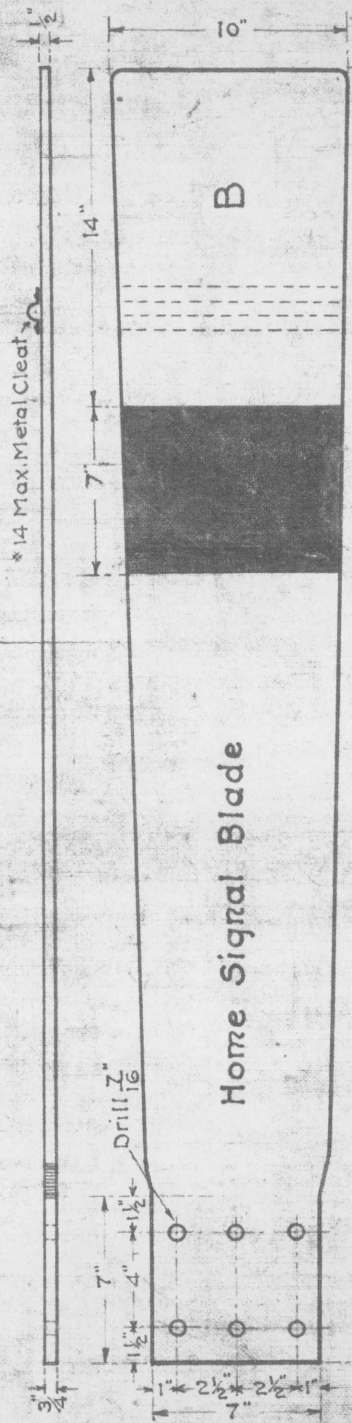


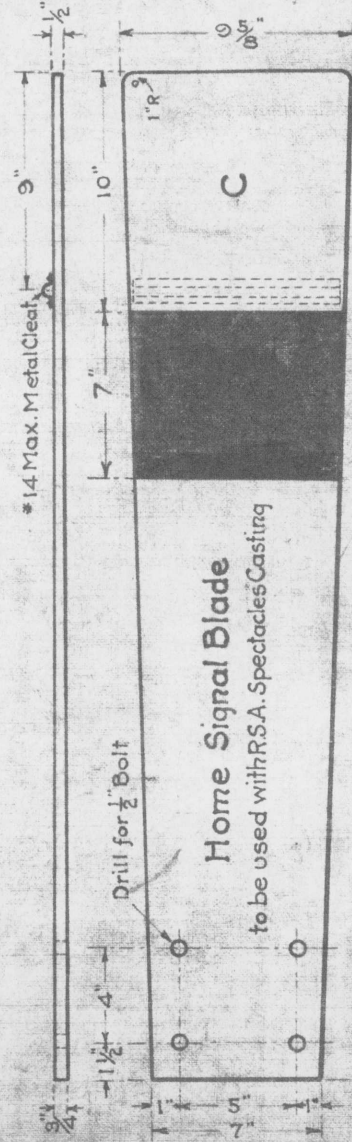
Distant Signal Blade

Paint Front Yellow with Black Stripe and Paint Back Black with White Stripe. Paint all edges Black.



Home Signal Blade

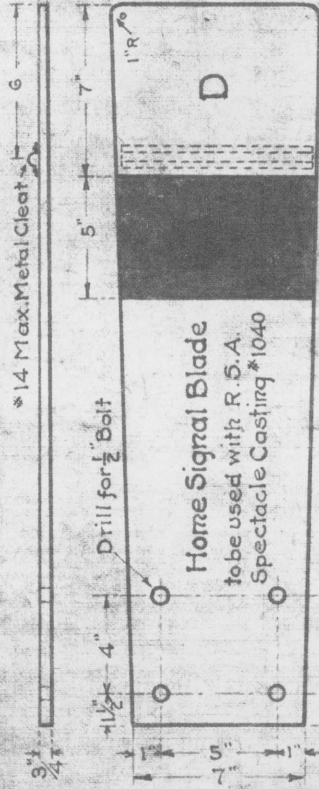
Paint Front Vermillion with White Stripe and Paint Back Black with White Stripe. Paint all edges Black.



Home Signal Blade

to be used with R.S.A. Spectacles Casting

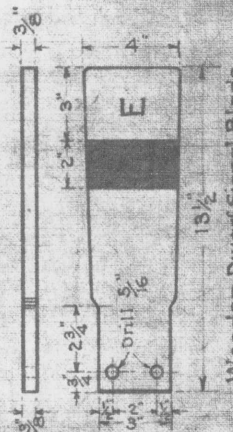
Paint Front Vermillion with White Stripe and Paint Back Black with White stripe. Paint all edges Black.



Home Signal Blade

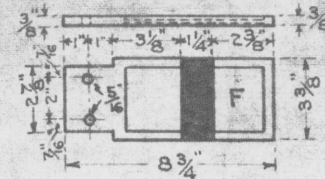
to be used with R.S.A. Spectacle Casting #1040

Paint Front Vermillion with White Stripe and Paint Back Black with White Stripe. Paint all edges Black.



Rubber Dwarf Signal Blade

Paint Front Vermillion with White Stripe
Paint Back Black with White Stripe
Paint all edges Black.



Rubber Dwarf Signal Blade.
Paint Front Vermillion with White Stripe
Paint Back Black with White Stripe
Paint all edges Black.

G. N. RY.

PLAN OF STANDARD SIGNAL BLADES

OFFICE OF SIGNAL ENGINEER

JUNE 1913

Scale 1 1/2" = 1 ft.

Note.

All Blades to be made of sound seasoned White Ash and painted with Valentine Signal Enamel applying same in accordance with recommendations of the makers.

The front surface of blade should be washed thoroughly clear before it is repainted.

NOTE A Revised to show that edges are to be painted black, also width of stripes on blades A, B, C, increased

Note.

No. 14 Max. Metal Cleat can be No. 18 Gauge Galv. Sheet Iron.

NOTE B:

REVISED ACCOUNT OF PLACING WHITE STRIPE ON BACK ALL BLADES.

Drawn by *Stat*
Checked by *NEB*
Approved by *CS*
Signal Engr.

6-10-1913

NOV 29 1913
19 27.
NOTE B

REVISED

167-14