

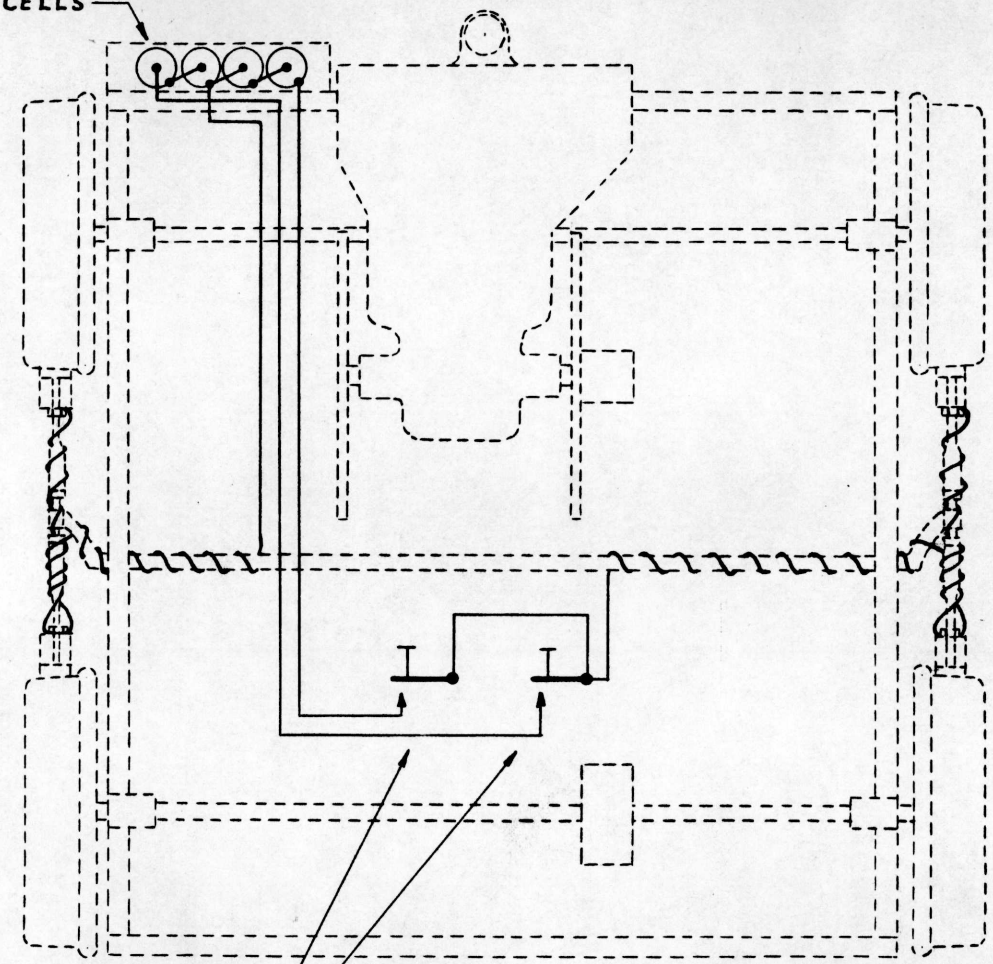
out

G.N. RY.
PLAN OF STANDARD
CONNECTIONS TO BE USED
ON MOTOR CARS FOR CHECK
OPERATION OF LAMP BULBS

OFFICE OF ENG'R SIGNALS . ST. PAUL, MINN.

STORAGE BATTERY
MUST NOT BE USED.

4 DRY CELLS



2 PUSH BUTTONS
EDWARDS NO. 623
G.E. SUPPLY CORP.

PLACE PUSH BUTTONS ON ALUMINUM
PLATE NEAR CONTROL LEVERS.
USE NO.16 STRANDED WIRE.

To Operate
Apply brakes and press buttons,
one at a time.
Pressing alternate buttons will
change the polarity of the current
flowing to the rails.
The button to be pressed depends
upon the polarity of the approach
track section.
Do not press both buttons at the
same time.

Drawn by <i>BZ</i>
Checked by <i>JRT</i>
Approved by <i>plab</i> Eng'r Signals
FEB. 1953
167 - 143