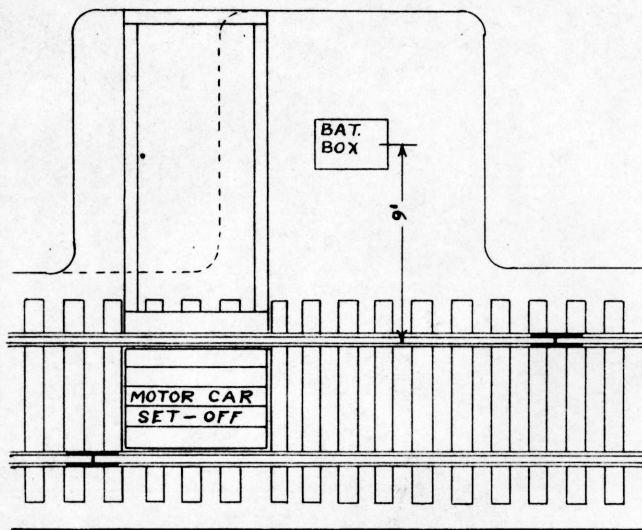


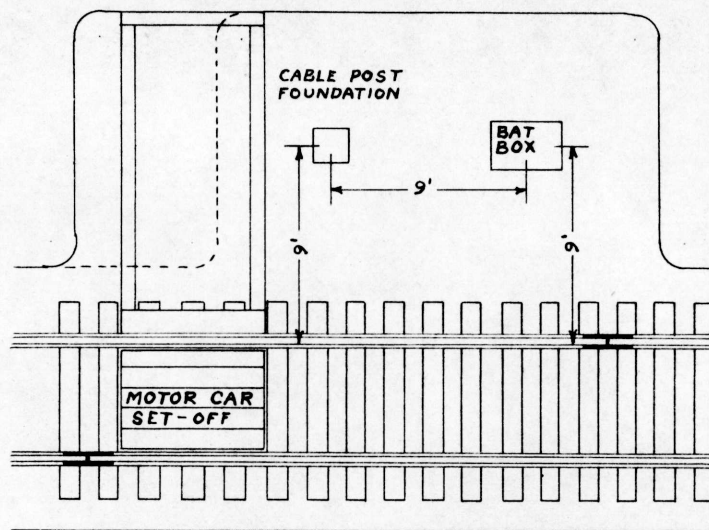
A

G.N.RY. PLAN OF STANDARD SIGNAL LOCATIONS

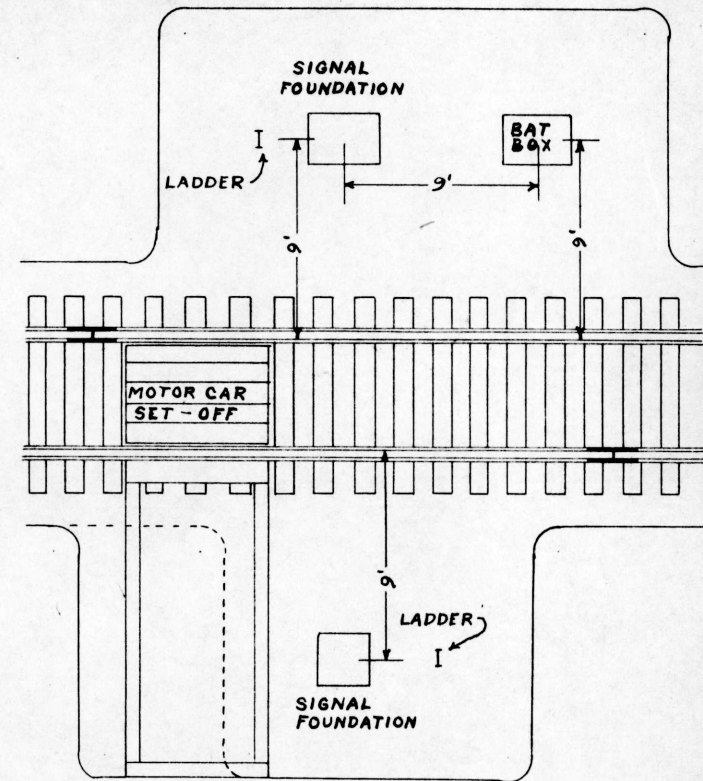
OFFICE OF ENGINEER SIGNALS ST. PAUL. MINN.



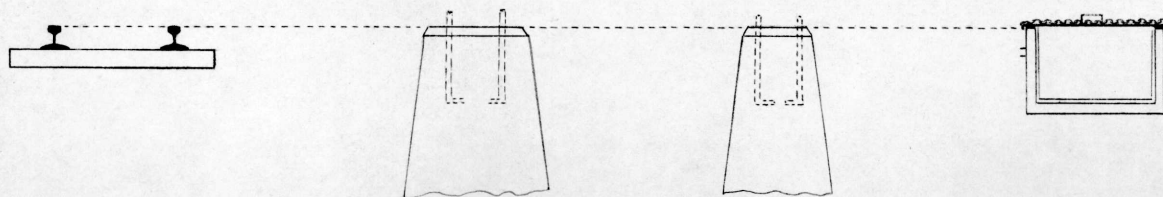
BATTERY BOX LOCATION
FIG. A



CABLE POST AND
BATTERY BOX LOCATION
FIG. B



DOUBLE SIGNAL LOCATION
FIG. C



Drawn by	M.H.
Checked by	JRT
Approved by	Ray
	Sup't. of Signals
NOV. 11, 1957	
167-146	