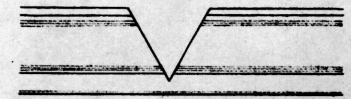
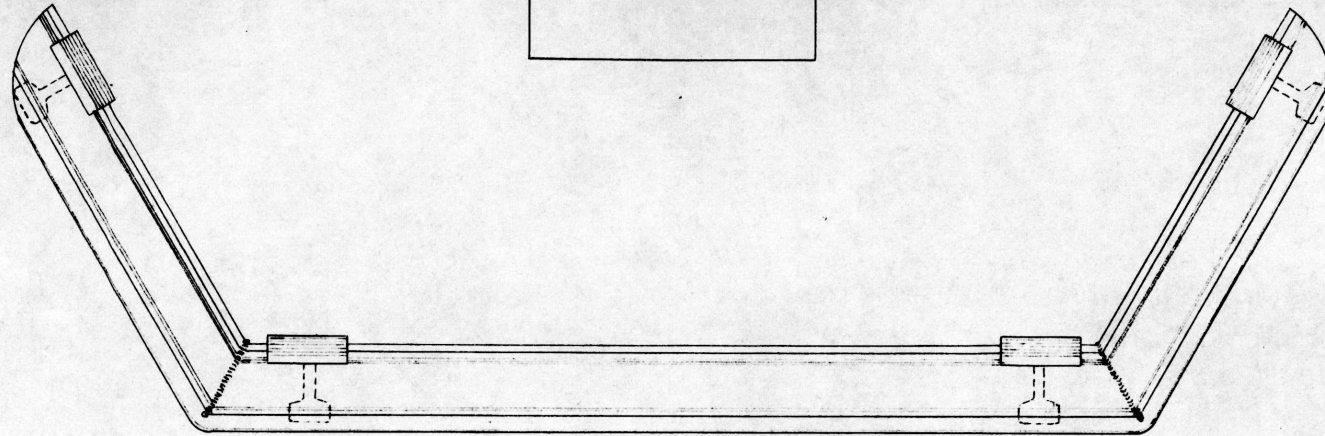


GNRHS Archives 2018

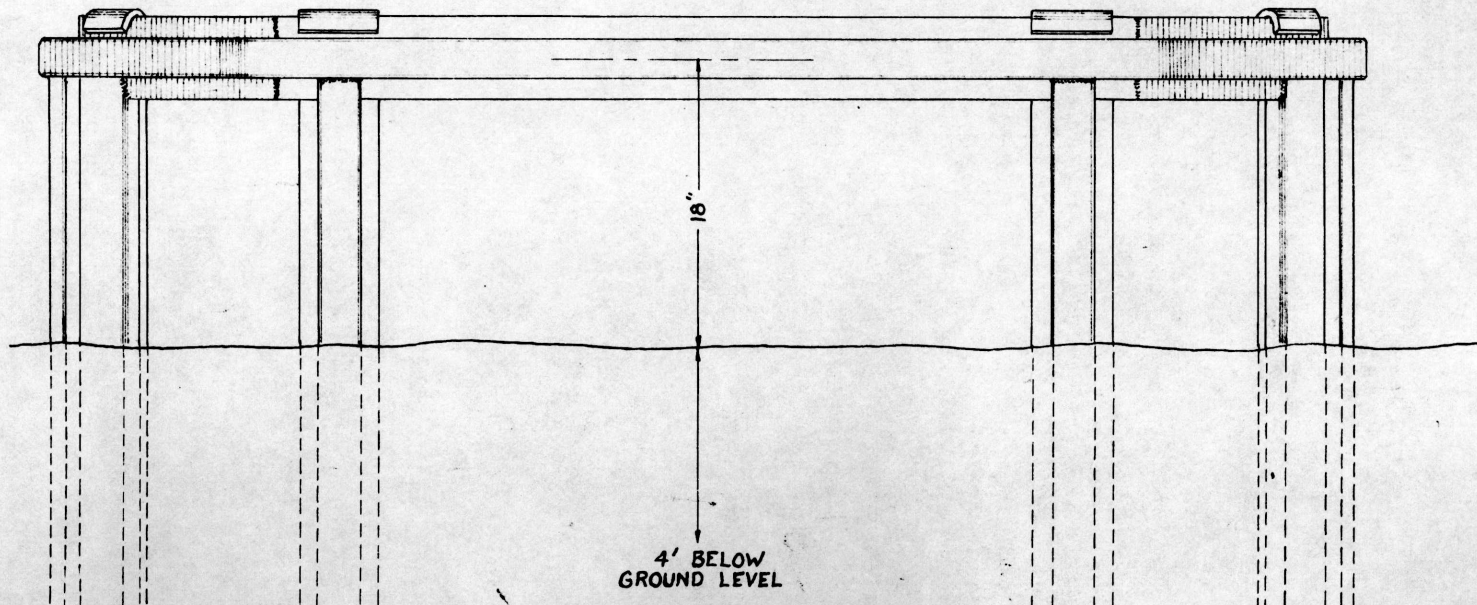
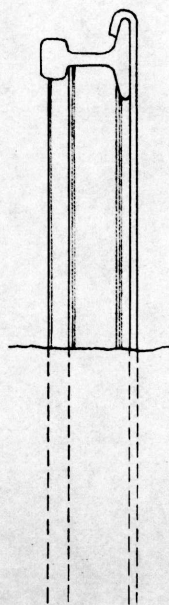
CROSSING SIGNAL  
FOUNDATION

G.N.R.Y.  
PLAN OF STANDARD  
GUARD RAIL  
FOR CROSSING SIGNALS  
OFFICE OF ENG'R SIGNALS ST. PAUL, MINN.  
JUNE 6, 1955

B



LEAVE 3/4" OF BALL  
WHEN CUTTING RAIL  
FOR BENDING.



18"  
4' BELOW  
GROUND LEVEL

Drawn by RZ  
Checked by JRT  
Approved by RAJ  
Eng'r Signals  
JUNE 6, 1955  
167-148