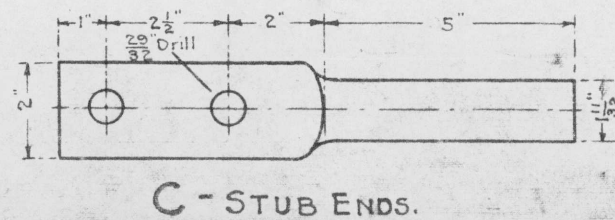
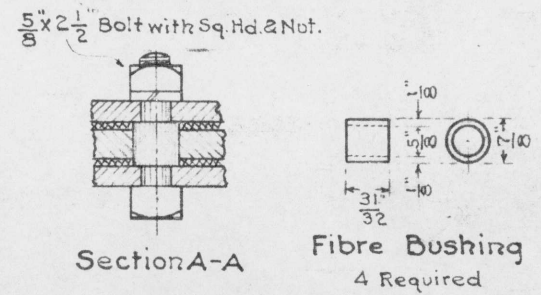
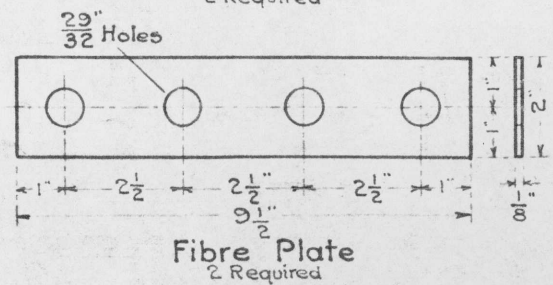
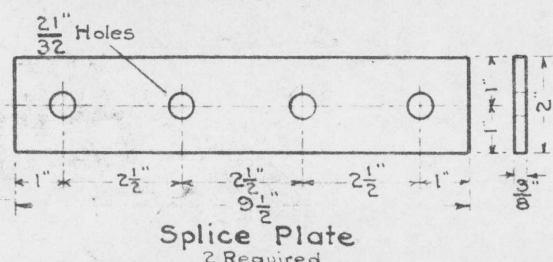
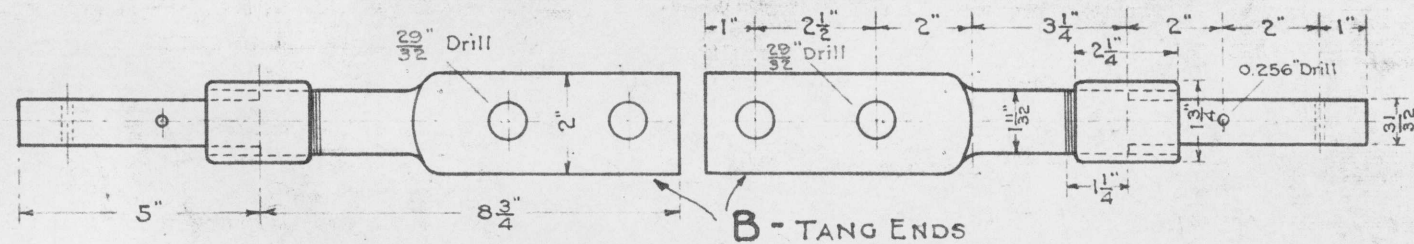
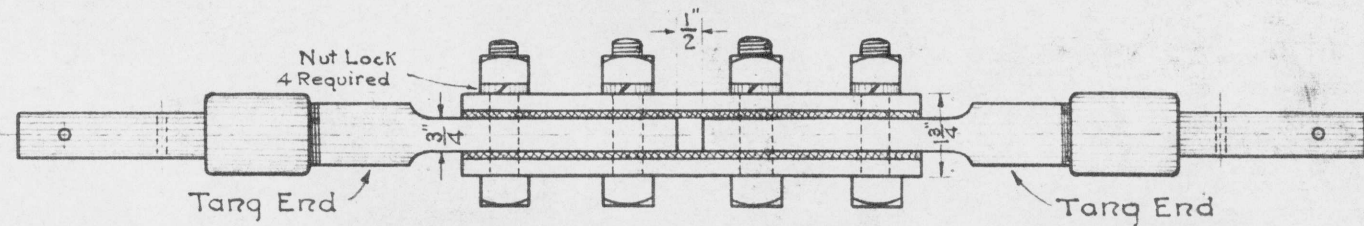
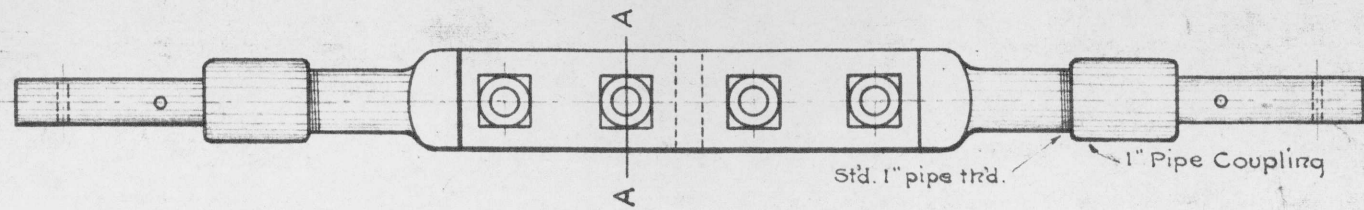


B

**G. N. RY.**  
**PLAN OF STANDARD**  
**PIPE LINE INSULATION**  
 OFFICE OF SIGNAL ENGINEER  
 JUNE 1913



- Bill of Material for one Insulation**
- 2 - B's. or 2 - C's. or 1-B and 1-C as ordered.
  - 2 - Splice Plates
  - 2 - Fibre Plates
  - 4 - Fibre Bushings
  - 4 - 5/8" x 2 1/2" Bolts with sq. hd + nut
  - 4 - 5/8" Nut Locks

Drawn by *stat*  
 Checked by *HEB*  
 Approved by *Cas*  
 Signal Engr.  
 8-22-13  
 R.S.A.1094 - 167-15