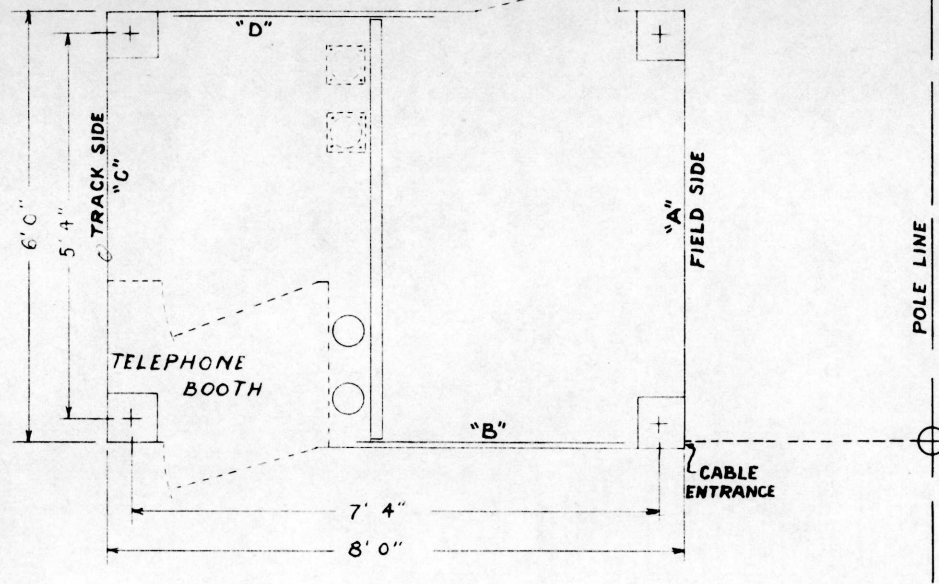
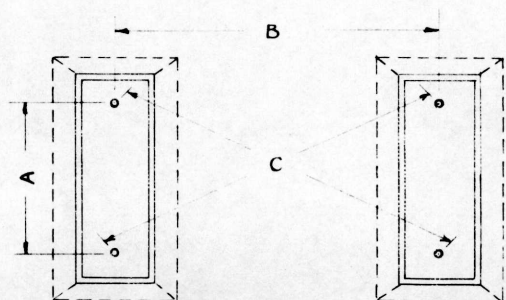


SPACING FOR FOUNDATION BOLTS FOR G.R.S.
6 FT. X 8 FT. BUNGALOWS AT SIDING SWITCHES.



LAYOUT OF TWO DOOR G.R.S.
BUNGALOW USED ON C.T.C.



SINGLE CASE { A - 18 1/2"
B - 3' 4 3/4"
C - 3' 8 3/4"

DOUBLE CASE { A - 18 1/2"
B - 6' 6 7/8"
C - 7' 6 7/16"

SPACING FOR FOUNDATION BOLTS FOR G.R.S.
ELECTRIC LOCK CASES

G. N. RY.
PLAN OF STANDARD
FOUNDATION BOLT SPACING
FOR BUNGALOWS AND CASES

MARCH 1954
REVISED-APRIL 16, 1956
FEB. 16, 1960

Drawn by AZ
Checked by JRT
Approved by RAJ
Eng'r Signals

167-150

A