

G.N.R.Y.
 PLAN OF STANDARD
 LIGHTNING ARRESTER BOX
 OFFICE OF ENGR SIGNALS, ST. PAUL, MINN.
 SCALE 1/2 IN. = 1 IN. JULY 1927

NOTE:

BOX TO BE OF PINE AND S.A.S.
 CLEATS TO BE 1" X 2" X 8".
 FURNISH TWO 1/2" X 4" LAG SCREENS AND
 TWO 1/2" CUT WASHERS WITH EACH BOX.
 FURNISH FOUR STRAPS FIG. A, AND
 FOUR 1/2" X 2" BOLTS WITH NUTS AND
 ONE CUT WASHER EACH.
 GIVE THREE COATS BLACK LINSEED
 OIL PAINT.

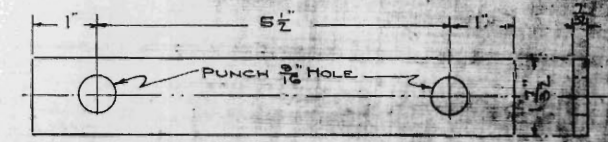


FIG. A - STRAP
 MADE BY CUTTING 28" GALV. IRON CROSS ARM BRACE
 IN FOUR EQUAL LENGTHS.