

FIG. A
 HOOK BOLT FOR PIPE CARRIER FOUNDATIONS
 (O. H. STEEL)

G. N. RY.
 PLAN OF STANDARD
SPECIAL SIGNAL BOLTS
 OFFICE OF SIGNAL ENGINEER
 MAY 1917

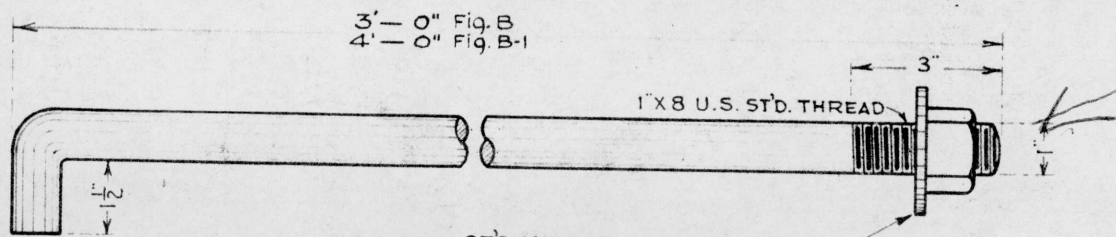


FIG. B-3'-0" Bolt
FIG. B-1 4'-0" Bolt
 SIGNAL FOUNDATION BOLT
 (O. H. STEEL)

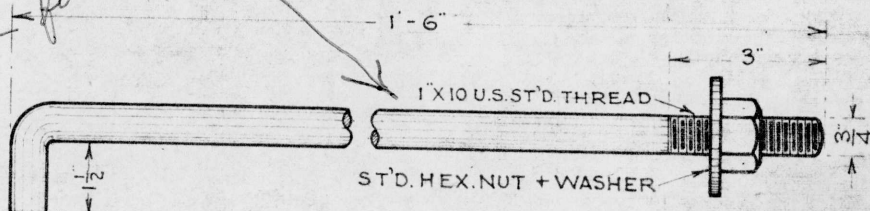


FIG. E
 CABLE POST + XING. BELL FOUNDATION BOLT.
 (O. H. STEEL)

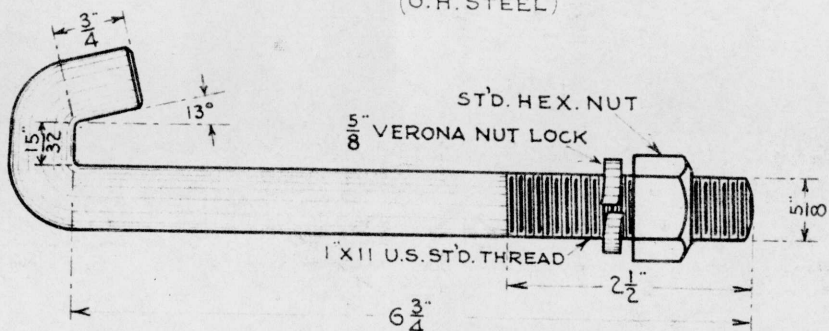


FIG. C
 HOOK BOLT FOR DETECTOR BAR RAIL CLIP.
 (O. H. STEEL)

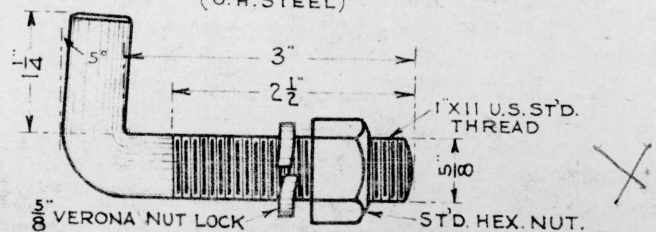


FIG. D
 SPECIAL SHORT HOOK BOLT FOR DETECTOR BAR RAIL CLIP.
 (O. H. STEEL)

Drawn by *Flat*
 Checked by *JBR*
 Approved by *CAS*
 Signal Engr.
 5-10-17.
 167-19