

G. N. RY.

PLAN OF STANDARD

**INSULATED GAUGE PLATES
FOR MODEL 5 SWITCH MACHINE**

OFFICE OF SUPT. OF SIGNALS ST. PAUL, MINN.

JAN. 1925

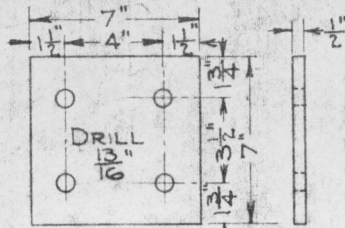


FIG. E. IRON PLATE
SCALE: 1/2"=1"

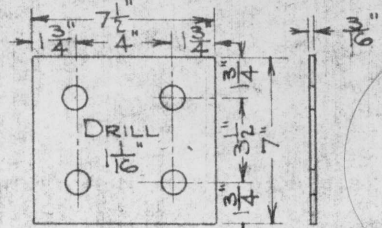


FIG. D. FIBRE INSULATING
PLATE. SCALE: 1/2"=1"

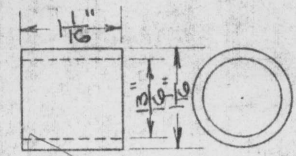


FIG. F. FIBRE INSULATING
BUSHING. SCALE: 6"=1"

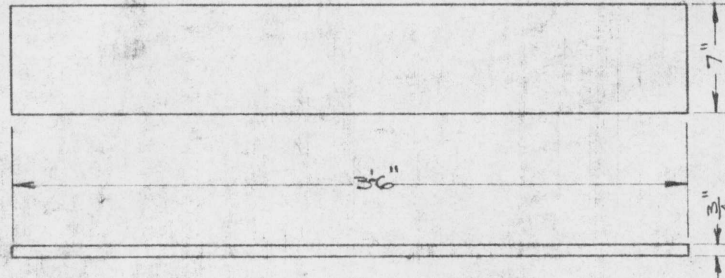


FIG. A. IRON BASE PLATE
SCALE: 1"=1"

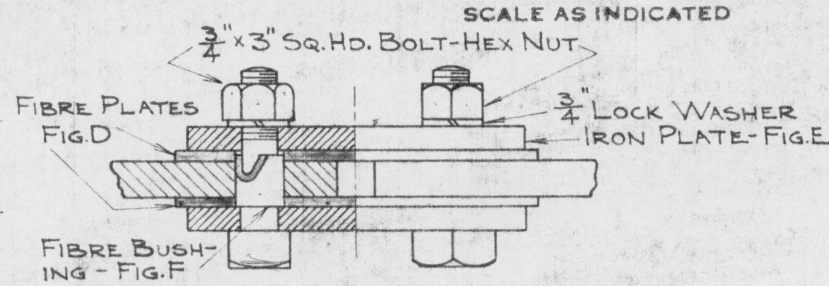


FIG. H. ASSEMBLY OF JOINT

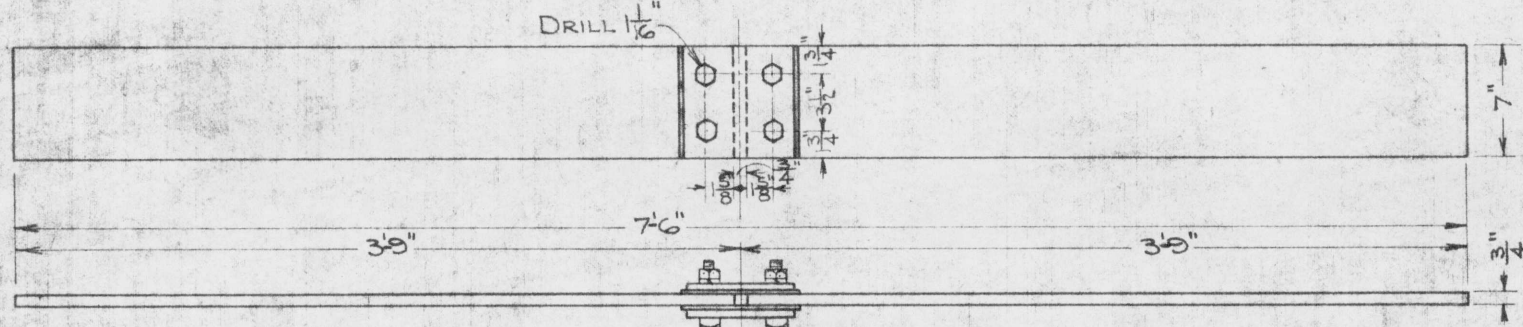


FIG. B. COMPLETE INSULATED GAUGE PLATE
SCALE: 1"=1"

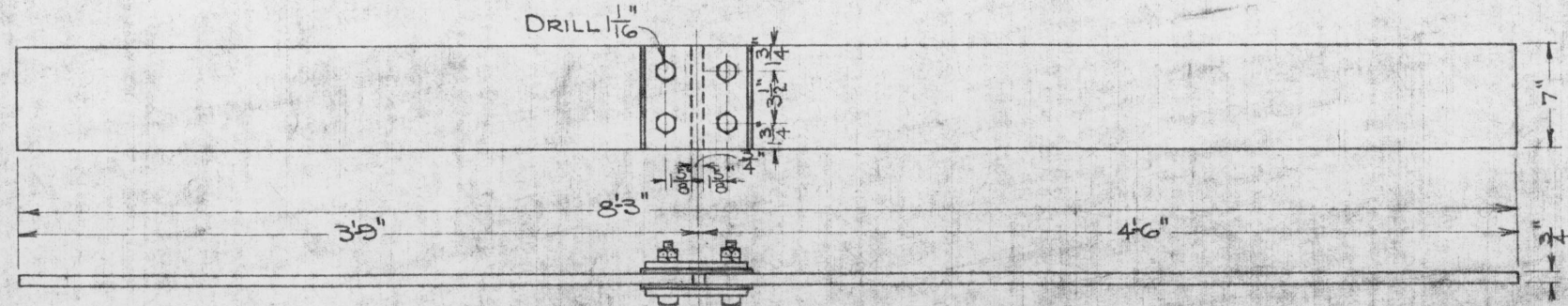


FIG. C. COMPLETE INSULATED GAUGE PLATE
SCALE: 1"=1"

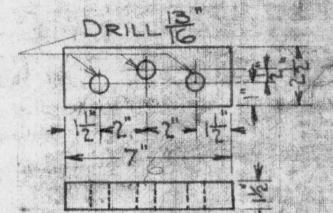


FIG. G. GAUGE BLOCK
SCALE: 1/2"=1"

REV.	4-1740
DRAWN BY	SRH
CHECKED BY	CBC
APPROVED BY	CAS
	SUPT. SIGNALS
JAN. 29, 1925	
167-30-A	