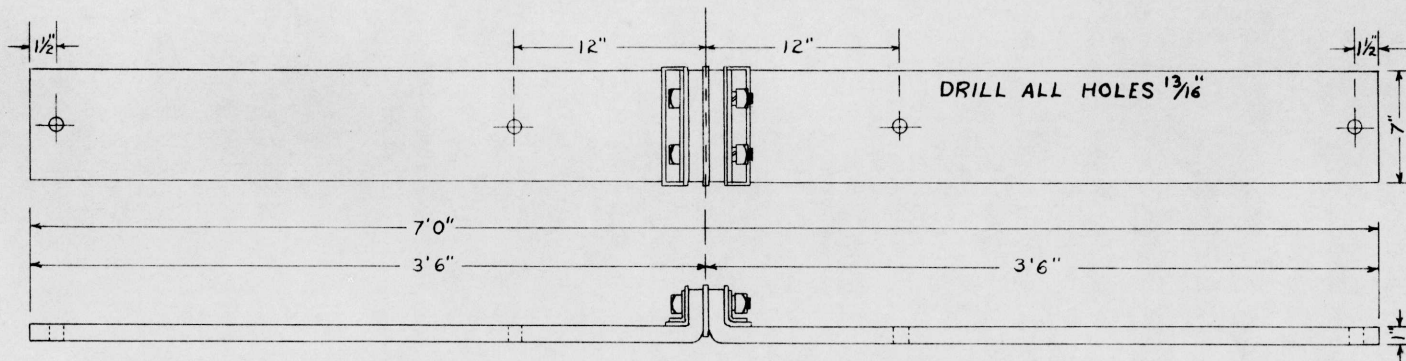


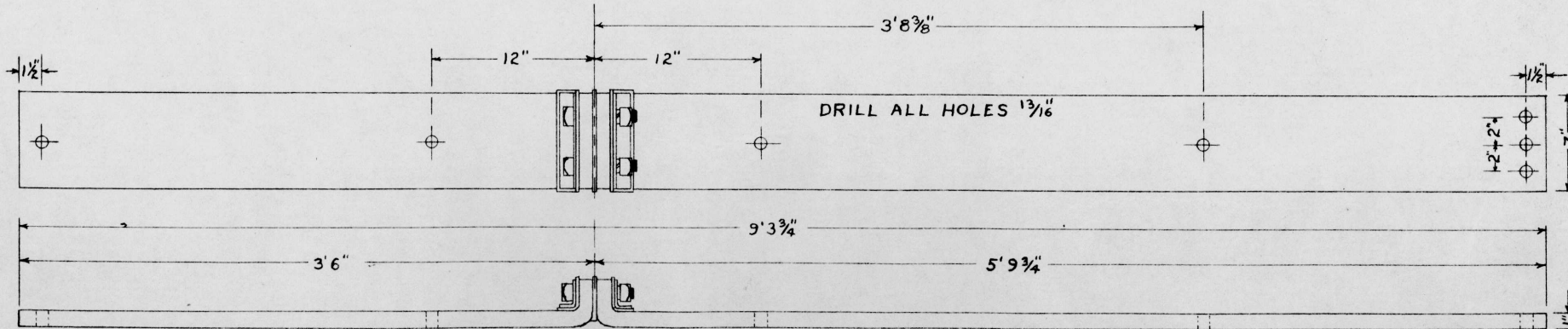
**FIG. C ASSEMBLY OF BUTT JOINT INSULATION COMPL. AAR#137317 AAR SIGNAL SECTION 13736**

$\frac{3}{4}$ " X  $4\frac{1}{4}$ " BOLT

**G.N.R.Y.**  
PLAN OF STANDARD  
**INSULATED GAUGE PLATES**  
FOR MODEL 5D SWITCH MACHINE  
OFFICE OF ENGINEER SIGNALS ST. PAUL, MINN.  
SCALE AS SHOWN



**FIG. A. COMPLETE INSULATED GAUGE PLATE**  
SCALE: 1"=1"



**FIG. B. COMPLETE INSULATED GAUGE PLATE**  
SCALE: 1"=1"

REVISED 4-14-58  
 Drawn by M.H.  
 Checked by JRT  
 Approved by RAJ  
 Supt. of Signals  
 NOV. 7, 1957  
 167-30C