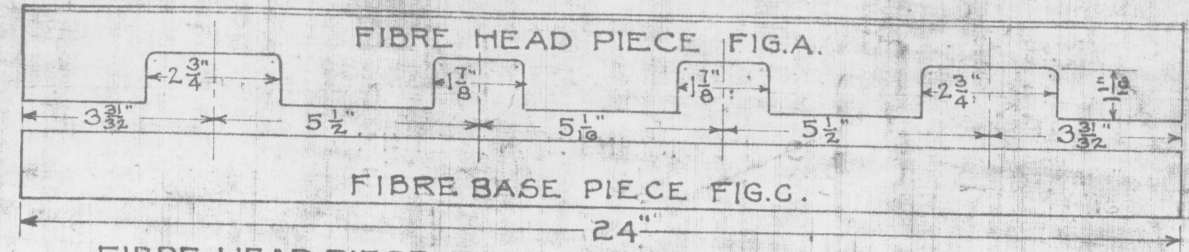


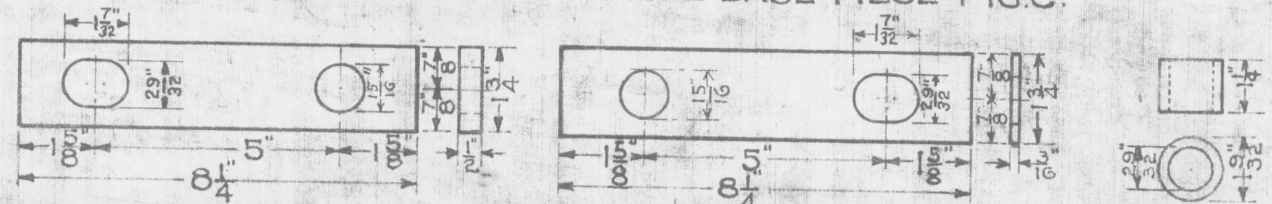
FIG. 1.

FIG. 2.

- 1ST. INSERT END POST, D, RAIL ENDS PRESSING FIRMLY AGAINST IT.
- 2ND. APPLY BASE FIBRES, C, TO BOTH SIDES OF THE RAILS. FIG. 1.
- 3RD. FIX METAL PLATES, X, LOOSELY IN POSITION. FIG. 2.



FIBRE HEAD PIECE FIG. A. & FIBRE BASE PIECE FIG. C.



STEEL WASHER PLATE FIG. F. FIBRE WASHER PLATE FIG. E. FIBRE BUSHING FIG. H.

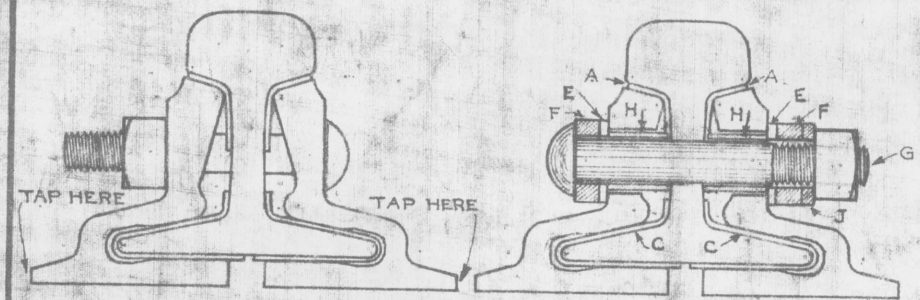
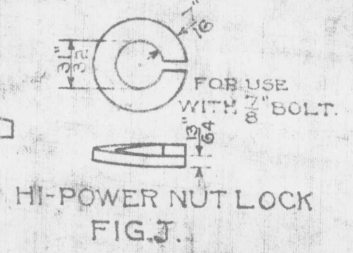


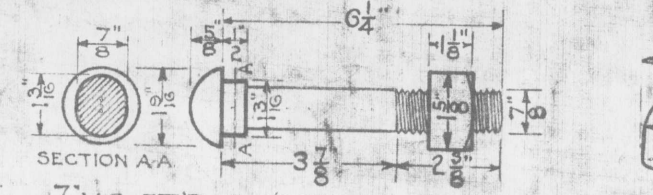
FIG. 3.

FIG. 4.

- 4TH. PLACE AND HOLD TOP FIBRE, A, IN POSITION AND DRAW METAL PLATES, X, TOGETHER, WITH TEMPORARY BOLTS, TO THE POSITION SHOWN IN FIG. 3. TAPPING LIGHTLY AT POINTS INDICATED IF NECESSARY.
- 5TH. REMOVE TEMPORARY BOLTS ONE AT A TIME, AND INSERT CAREFULLY BUSHINGS, H, WITH FIBRE PLATES, E, METAL PLATES, F, NUT LOCK, J, AND BOLTS, G, AS SHOWN BY FIG. 4, TIGHTENING NUTS PROPERLY.

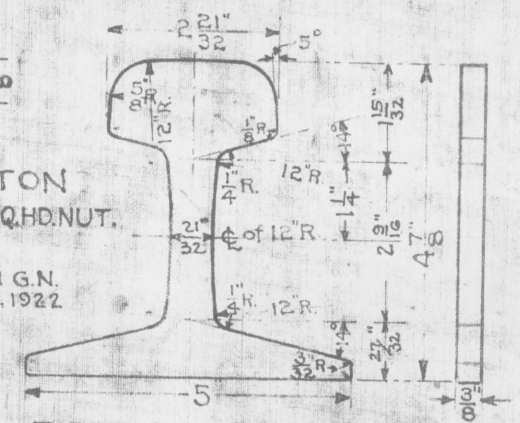


HI-POWER NUT LOCK FIG. J.

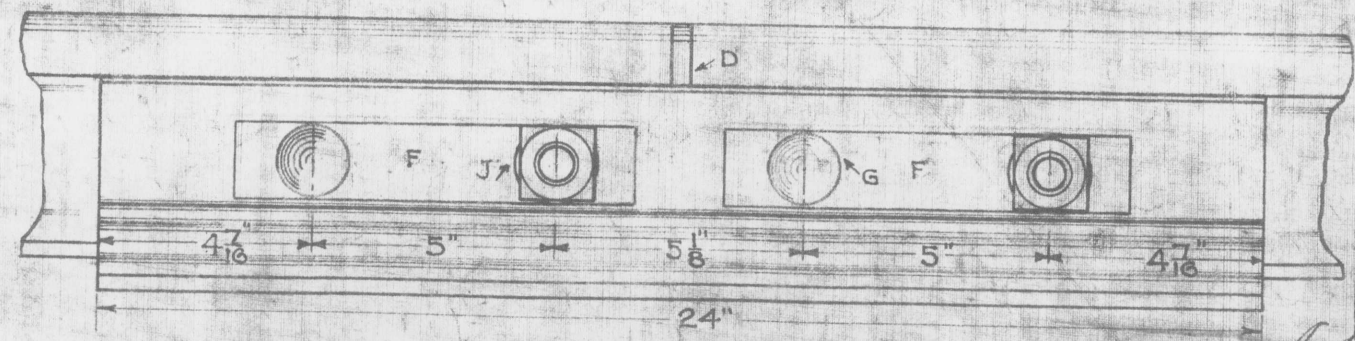
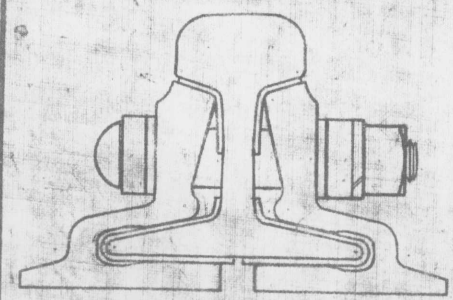


7/8 U.S. ST'D. CUT THREAD BUTTON HEAD TRK. BOLT WITH 1/8" x 1 5/8" SQ. HD. NUT. FIG. G.

MATERIAL TO BE IN ACCORDANCE WITH G.N. ST'D. SPEC. NO. 3304-15-1, 2, & 3. NOV. 6, 1922



FIBRE END POST FIG. D.



NOTE: THE FIBRE PARTS AS SHOWN HEREON SHALL BE OF A QUALITY EQUAL TO THE REQUIREMENTS OF THE SPECIFICATIONS OF THE RAILWAY SIGNAL ASSOCIATION AND IN ADDITION SHALL BE WELL COATED WITH PARAFFIN AND STAMPED WITH TRADE MARK OF MANUFACTURER.

SECTION FOREMAN ARE RESPONSIBLE FOR THE PROPER CARE OF INSULATED JOINTS. THE PROPER INSTALLATION AND MAINTENANCE OF INSULATED RAIL JOINTS HAS A MOST IMPORTANT BEARING ON THE OPERATION OF ALL SIGNAL APPARATUS CONTROLLED BY ELECTRIC TRACK CIRCUITS. IT IS THE DUTY OF SIGNAL REPAIRMEN TO SECURE AND KEEP ON HAND SUFFICIENT FIBRE AND METAL REPAIR PARTS TO PROPERLY MAINTAIN THE INSULATED JOINTS IN THEIR TERRITORY FOR A PERIOD OF SIXTY DAYS. THEY WILL MAKE FREQUENT INSPECTIONS OF ALL INSULATED RAIL JOINTS AND WILL SUPPLY SECTION FOREMEN WITH REPAIR PARTS AS REQUIRED. SECTION FOREMEN WILL ALSO MAKE FREQUENT INSPECTIONS OF ALL INSULATED RAIL JOINTS, OBTAINING FROM THE SIGNAL REPAIRMAN NECESSARY REPAIR PARTS, AND MAKE REPAIRS PROMPTLY. RAILS WITH SAWED ENDS ONLY, SHALL BE USED WITH INSULATED JOINTS. SHARP PROJECTIONS SHALL BE CAREFULLY CHIPPED OFF AT ALL PLACES WHERE THEY COME IN CONTACT WITH FIBRE PARTS. ANTI-CREEPERS SHALL BE USED ON EACH SIDE OF INSULATED RAIL JOINTS AND IN ALL CASES INSULATED JOINTS SHALL BE SUPPORTED ON TWO GOOD TIES, WHICH MUST BE KEPT WELL TAMPED. REQUISITION FOR REPAIR PARTS FOR INSULATED JOINTS, SHALL STATE WEIGHT OF RAIL, TYPE OF JOINT, REFERENCE LETTER ON, AND DRAWING NUMBER OF, PLAN ILLUSTRATING THIS TYPE. ALL CONCERNED WILL BE GOVERNED ACCORDINGLY.

NOTE - B - NUT FOR BOLT - G - CHANGED BACK TO SQ. HD. WIDTH OF FIBRE PLATE NOTE. REDRAWN SEPT. 1919. FIG. E CHANGED FROM 1 7/8" TO 1 3/4" ONE TO SHOW FIBRE DETAILS. HOLE IN PLATE SHOWN ELONGATED.

NOTE - A - LENGTH OF FIBRE PLATE E. CHANGED FROM 3 1/2" TO 8 1/4". LENGTH OF BOLT G. CHANGED FROM 5 3/4" TO 6". TOGETHER WITH CHANGE FROM SQUARE NUT TO HEXAGON NUT.

| | | | | |
|----------|---------|---------------|---------------|----------|
| 12-23-25 | 2-18-24 | 2-14-1920 | 12-5-1919 | REVISED. |
| | 9-23-24 | SEE NOTE - B. | SEE NOTE - A. | |

APPROVED: *H. Fogel and* CHIEF ENGINEER

APPROVED: *W. M. ...* VICE PRESIDENT

Drawn by: *R. ...*
 Checked by: *J. B. ...*
 Approved by: *W. M. ...*
 Signal Eng'r

9-5-19
167-31B