

CONTINUOUS NO. 1 INSULATED RAIL JOINT

FOR G.N. RAIL SECTIONS 75-77½ AND 80 LB. OF 1900, EXCEPT 75 LB. OF '87 RAIL.

WITH INSTRUCTIONS FOR INSTALLATION AND MAINTENANCE

OFFICE OF SUPT. OF SIGNALS, ST. PAUL, MINN.

SCALE: "1" = "1"

SEPT 1924

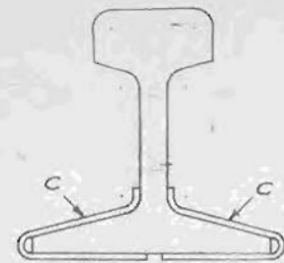


FIG. 1

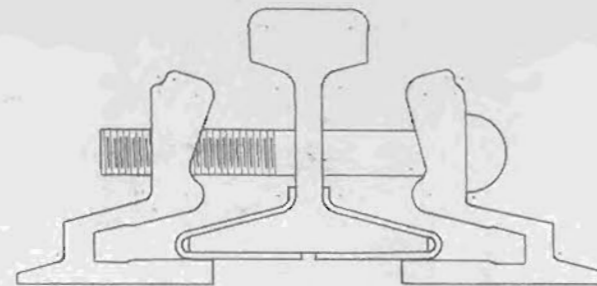
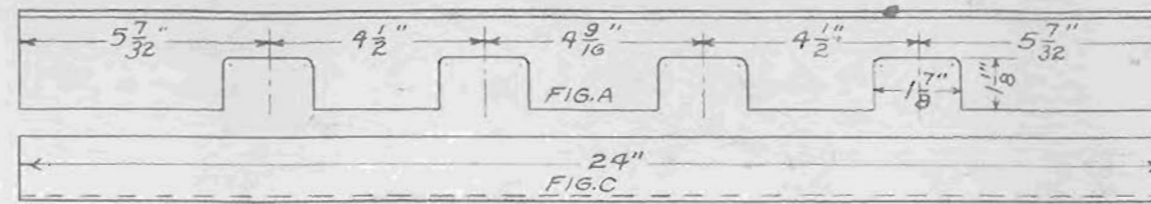
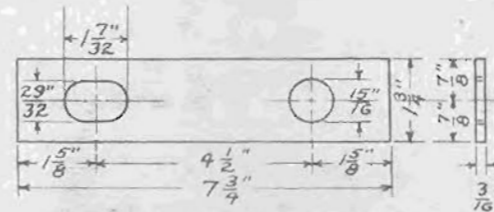
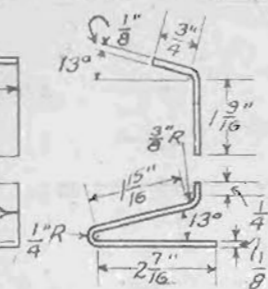


FIG. 2

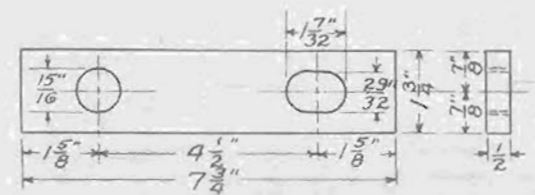
1st. Insert End Post, D, Rail Ends Pressing Firmly Against It.
2nd. Apply Base Fibers, C, To Both Sides Of The Rails Fig. 1.
3rd. Fix Angle Bars Loosely in Position Fig. 2.



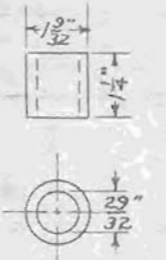
FIBER HEAD PIECE FIG. A.
FIBER BASE PIECE FIG. C.



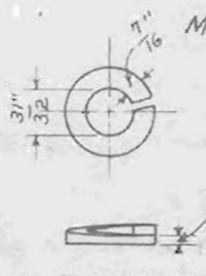
FIBER WASHER PLATE FIG. E.



METAL WASHER PLATE FIG. F.



FIBER BUSHING FIG. H.



HI-POWER NUT LOCK - FIG. J.
FOR 7/8" BOLT

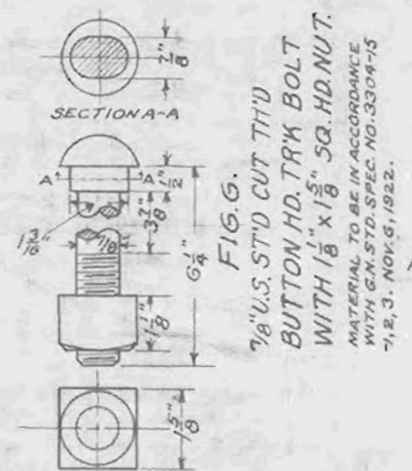


FIG. G.
7/8" U.S. STD. CUT TH'D
BUTTON HD. TRK. BOLT
WITH 1/8" x 1/8" SQ. HD. NUT.
MATERIAL TO BE IN ACCORDANCE
WITH G.N. STD. SPEC. NO. 3304-75
7-12-3, NOV. 6, 1922.

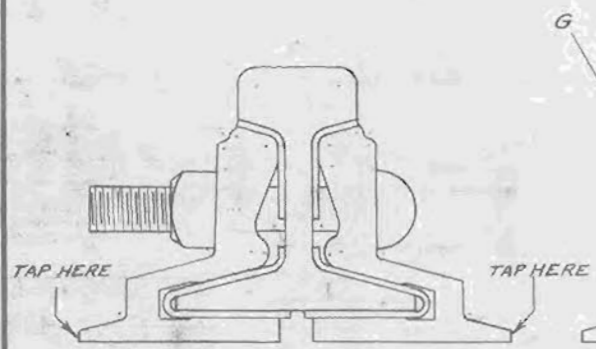


FIG. 3

4th. Place And Hold Top Fiber, A, In Position And Draw Angle Bars Together With Temporary Bolts To The Position Shown In Fig. 3, Tapping Lightly At Points Indicated If Necessary.

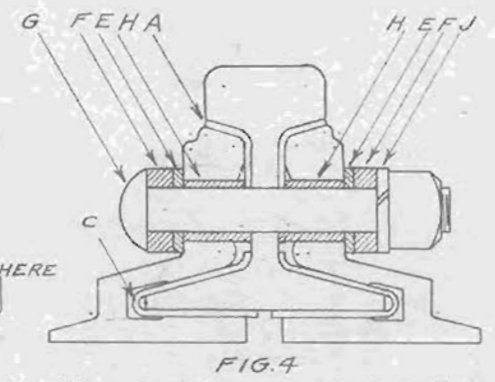
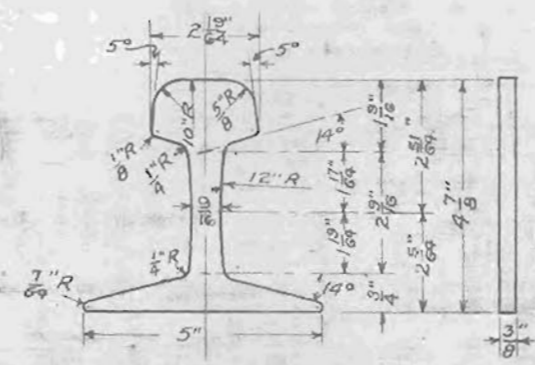


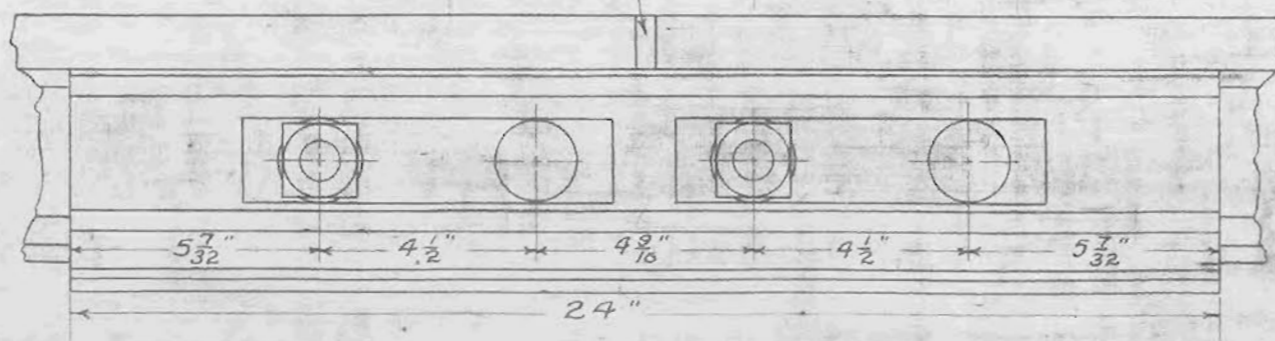
FIG. 4

5th. Remove Temporary Bolts One At A Time, And Insert Bushings, H, Carefully, With Fiber Plates, E, Metal Plates, F, Lock Nut, J, And Bolts, G, As Shown By Fig. 4 Tightening Nuts Properly.



FIBER END POST FIG. D

NOTE - THE FIBER PARTS AS SHOWN HEREON SHALL BE OF A QUALITY EQUAL TO THE REQUIREMENTS OF THE SPECIFICATIONS OF THE A.R.A. AND IN ADDITION SHALL BE WELL COATED WITH PARAFFINE AND STAMPED WITH TRADE MARK OF THE MANUFACTURER.



ASSEMBLY

SECTION FOREMEN ARE RESPONSIBLE FOR THE PROPER CARE OF INSULATED JOINTS.

THE PROPER INSTALLATION AND MAINTENANCE OF INSULATED RAIL JOINTS HAS A MOST IMPORTANT BEARING ON THE OPERATION OF ALL SIGNAL APPARATUS CONTROLLED BY ELECTRIC TRACK CIRCUITS. IT IS THE DUTY OF SIGNAL REPAIRMEN TO SECURE AND KEEP ON HAND SUFFICIENT FIBER AND METAL REPAIR PARTS TO PROPERLY MAINTAIN THE INSULATED JOINTS IN THEIR TERRITORY FOR A PERIOD OF SIXTY DAYS. THEY WILL MAKE FREQUENT INSPECTIONS OF ALL INSULATED RAIL JOINTS AND WILL SUPPLY SECTION FOREMEN WITH REPAIR PARTS AS REQUIRED.

SECTION FOREMEN WILL ALSO MAKE FREQUENT INSPECTIONS OF ALL INSULATED RAIL JOINTS, OBTAINING FROM THE SIGNAL REPAIRMAN NECESSARY PARTS, AND MAKE REPAIRS PROMPTLY.

RAILS WITH SAWED ENDS ONLY SHALL BE USED WITH INSULATED JOINTS. SHARP PROJECTIONS SHALL BE CAREFULLY CHIPPED OFF AT ALL PLACES WHERE THEY COME IN CONTACT WITH FIBER PARTS. ANTI-CREEPERS SHALL BE USED ON EACH SIDE OF THE INSULATED RAIL JOINTS AND IN ALL CASES INSULATED JOINTS SHALL BE SUPPORTED ON TWO GOOD TIES, WHICH MUST BE KEPT WELL TAMPED.

REQUISITIONS FOR REPAIR PARTS FOR INSULATED JOINTS SHALL STATE THE WEIGHT OF RAIL, TYPE JOINT, REFERENCE LETTER ON, AND DRAWING NUMBER OF PLAN ILLUSTRATING THIS TYPE.

ALL CONCERNED WILL BE GOVERNED ACCORDINGLY.

DRAWN BY: R.M.
CHECKED BY: C.B.C.
APPROVED BY: S.A.
Supt. SIGNALS
9-3-24
167-31-F