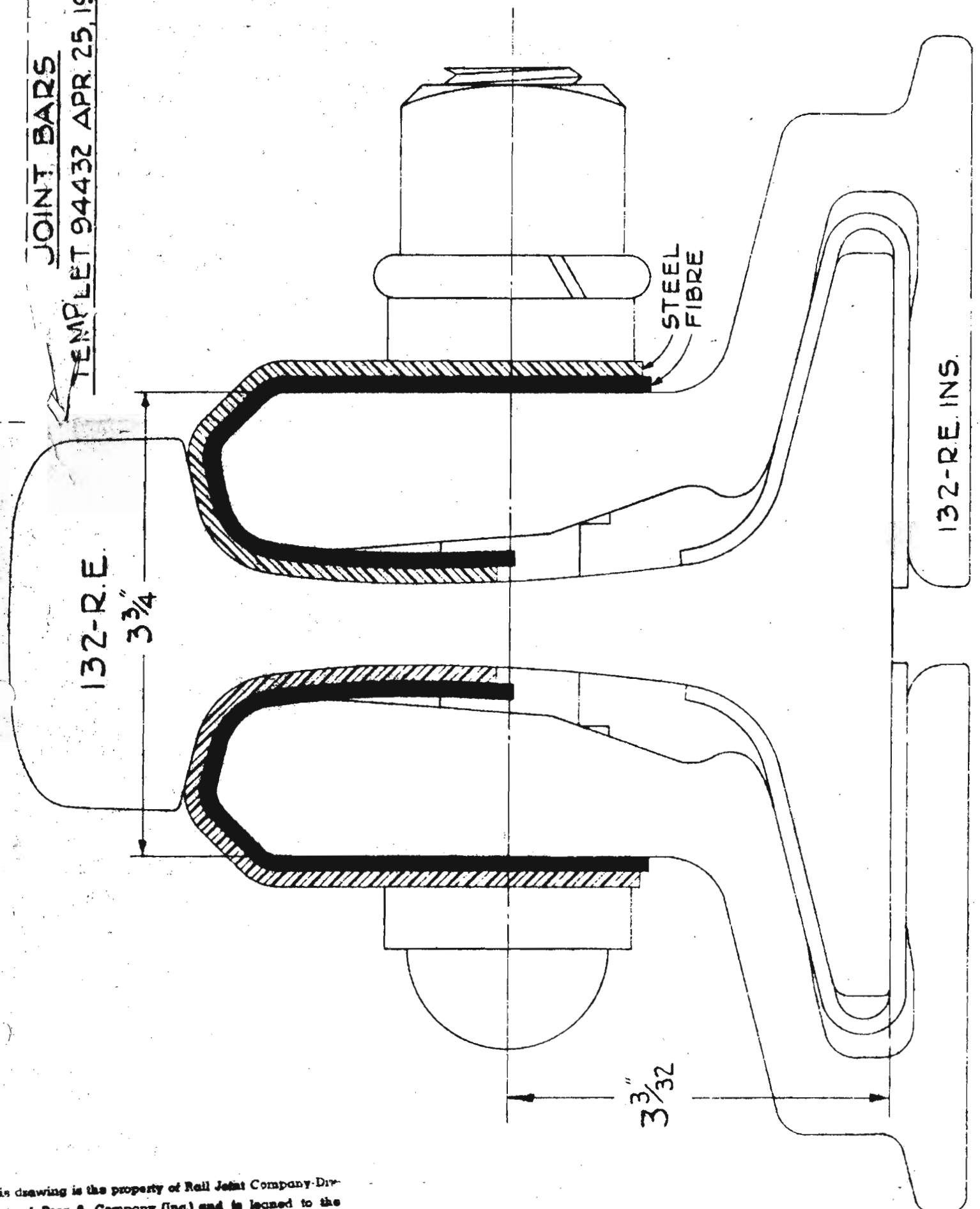


# RAIL JOINT COMPANY

DIVISION OF POOR & COMPANY (INC.)

JOINT BARS  
TEMPLET 94432 APR 25, 1947



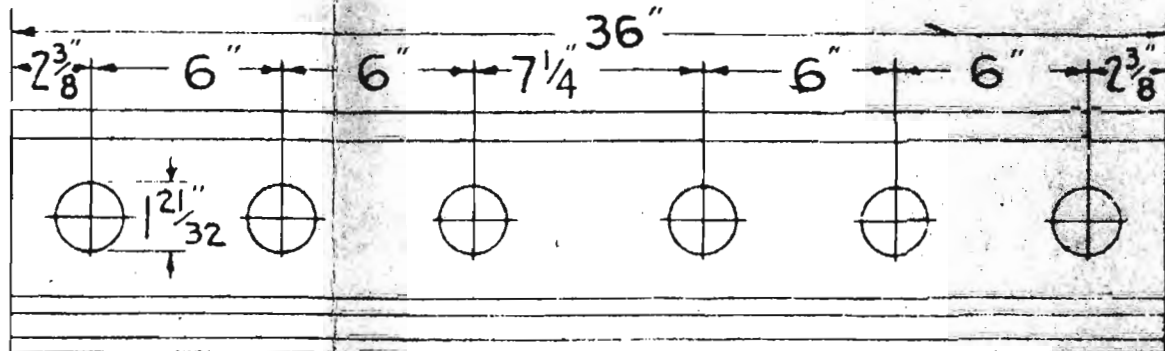
## ARMORED CONTINUOUS INSULATED JOINT FILE NO. 300-377

JAN. 16, 1952 ISSUE NO. 1

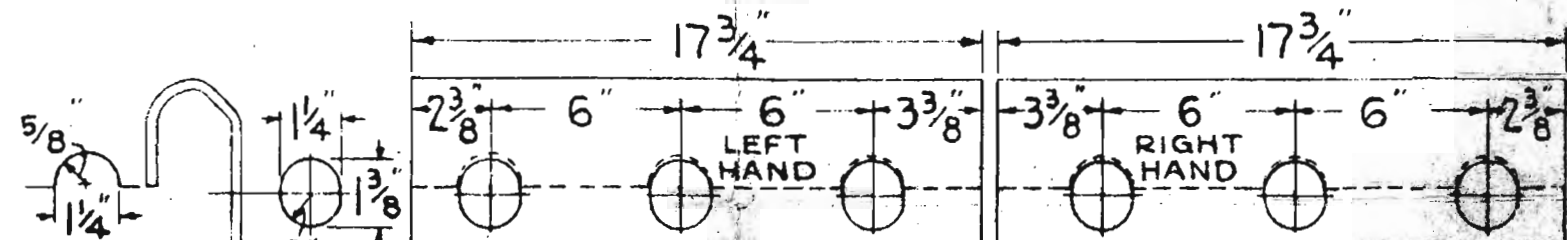
132-R.E. RAIL

GREAT NORTHERN RY. CO.

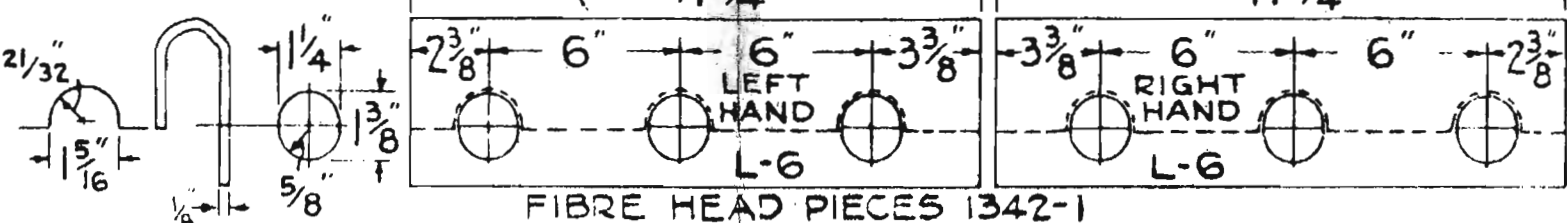
ASSEMBLE JOINTS  
WITH NUTS  
ALTERNATE



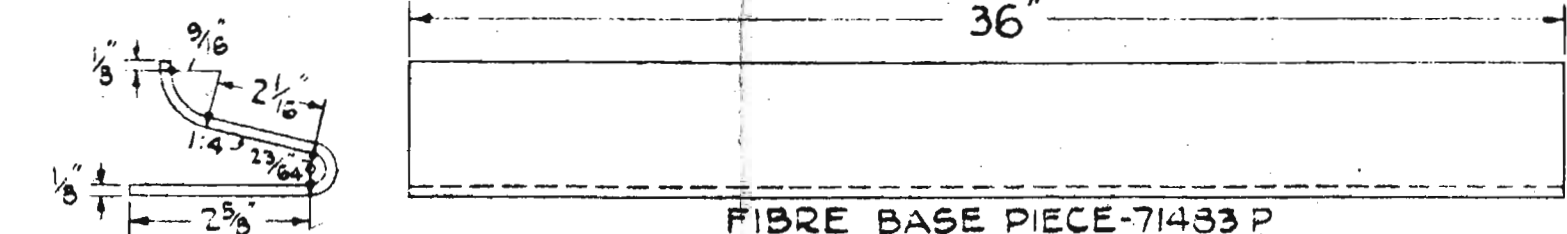
ELEVATION OF JOINT BAR



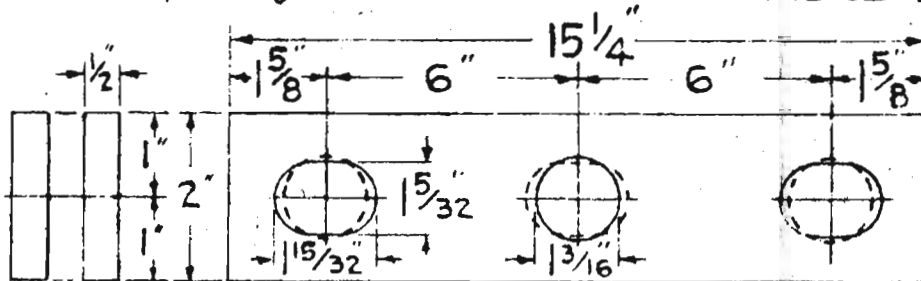
STEEL HEAD PIECES 1343-1



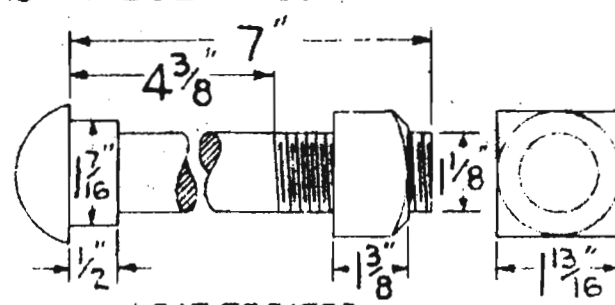
FIBRE HEAD PIECES 1342-1



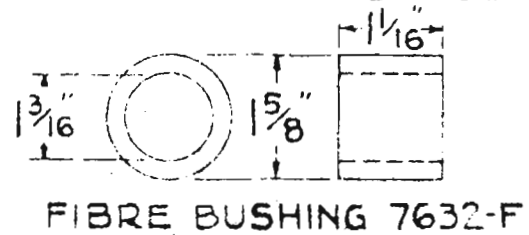
FIBRE BASE PIECE-71433 P



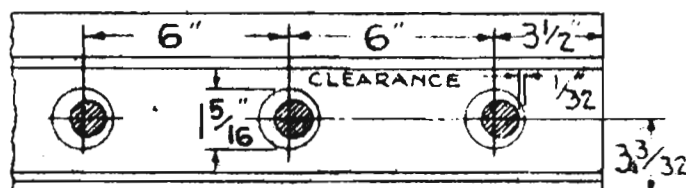
STEEL WASHER PLATE 76381-A  
WASHER PLATES PUNCHED IN PAIRS  
AS INDICATED BY FULL & DOTTED LINES



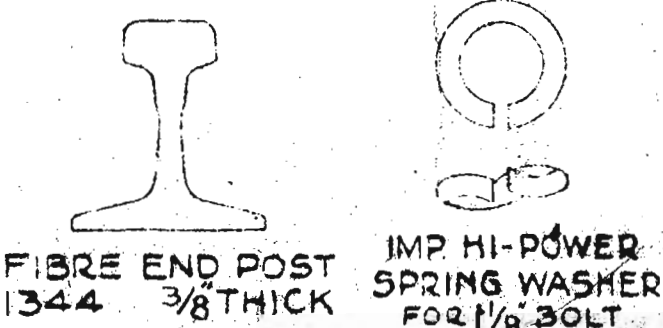
HEAT TREATED  
CUT THREAD BOLT 76421 NUT



FIBRE BUSHING 7632-F



RAIL DRILLING per RR Dwg. 3104-38-1 June 1951



FIBRE END POST 1344  
IMP. HI-POWER SPRING WASHER FOR 1 1/8 BOLT

STANDARD  
ARMORED CONTINUOUS  
INSULATED RAIL JOINT  
R. E. 132 LB.  
WITH INSTRUCTIONS FOR INSTALLATION AND MAINTENANCE  
OFFICE OF ENGINEER SIGNALS ST. PAUL, MINN.  
SEPT. 30 1957

Section foreman responsible for the proper care of insulated joints.  
The proper installation and maintenance of insulated rail joints has a most important bearing on the operation of all signal apparatus controlled by electric track circuits. It is the duty of signal repairmen to secure and keep in hand sufficient stock and material repair parts to properly maintain the insulated joints in their territory for a period of sixty days; they will make frequent inspections of all insulated rail joints and will supply section foreman with repair parts as required.  
Section foreman will also make frequent inspection of all insulated rail joints, obtaining from the signal repairmen necessary repair parts, and make repairs promptly. Rails with sawed ends only, shall be used with insulated joints.  
Sharp projections shall be carefully chipped off at all places where they come in contact with fiber parts. Anti-creepers shall be used on each side of insulated rail joints, and in all cases insulated joints shall be supported on two gage ties which must be kept well trimmed.  
Requisition for repair parts for insulated joints shall state, weight of rail, type of joints, reference letter and drawing No. of plan illustrating this type.  
All concerned will be governed accordingly.

Note: The fiber parts as shown here on shall be of a quality equal to the requirements of the specifications of the A. R. R. And in addition shall be well coated with paraffin and stamped with Trade Mark of manufacturer.  
Note: Furnish 3 abrasion plates Rail joint CQS, templet # 42141 punched as per. file No. 3005-30 issue #2 dated Feb. 15, 1937.

GNRHS Archives 2018

This drawing is the property of Rail Joint Company, Division of Peck & Company (Inc.) and is loaned to the recipient for the purpose of his use only in maintaining joints to which it refers. The drawing shall not be copied, or duplicated, or its possession transferred for use of another.