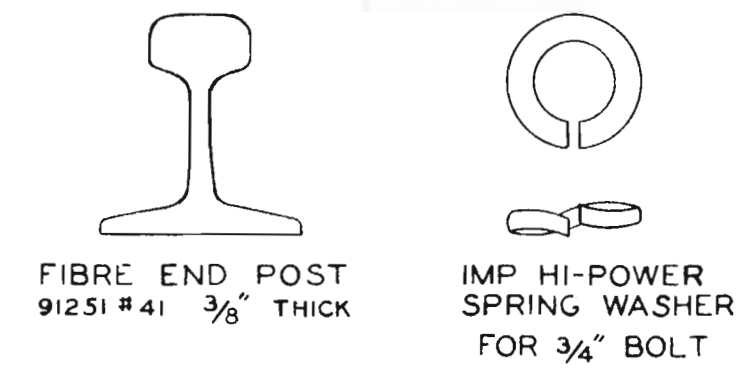
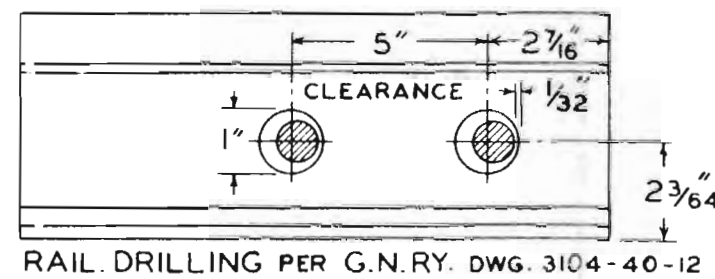
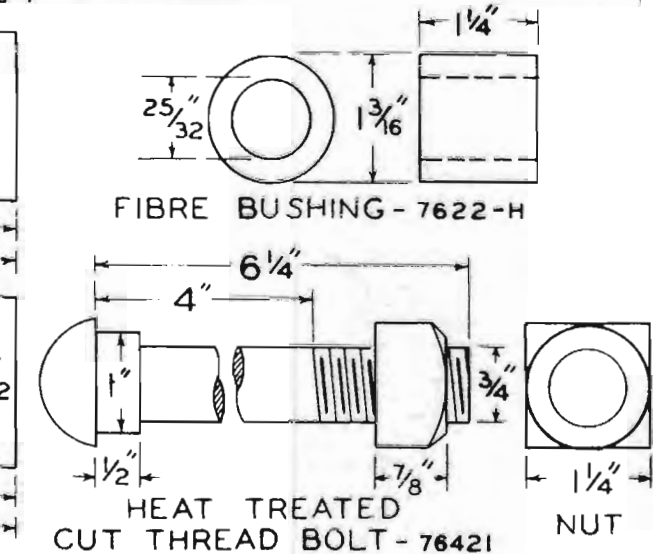
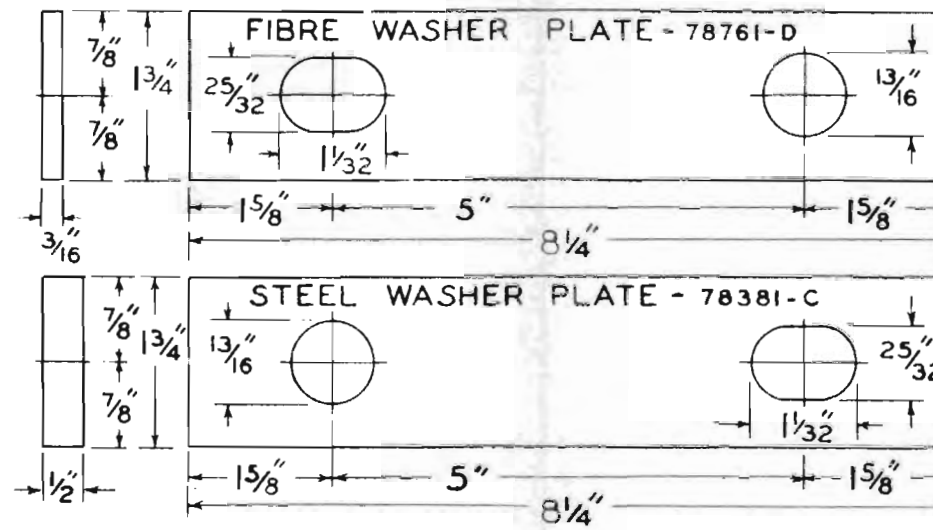
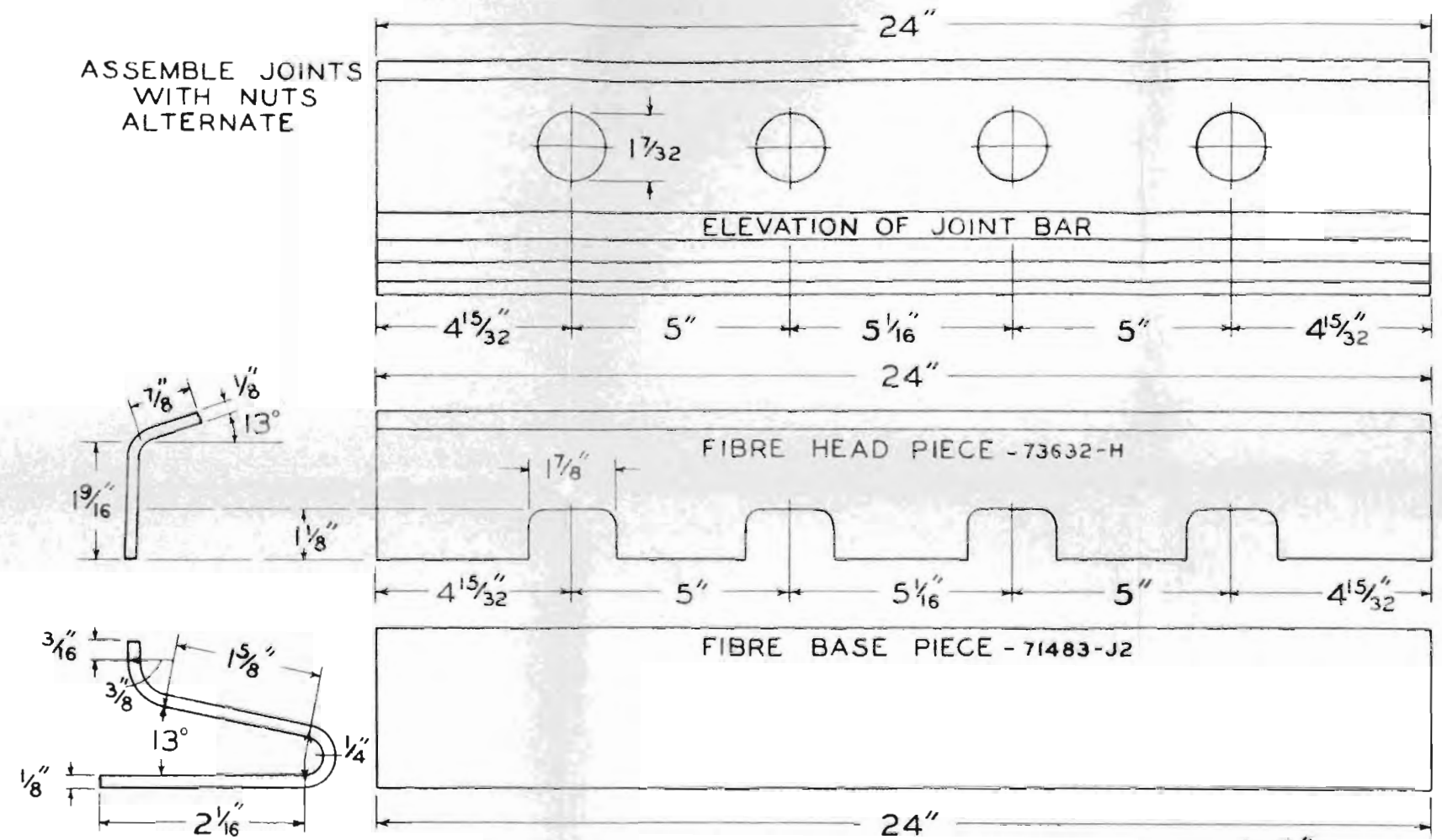


ASSEMBLE JOINTS WITH NUTS ALTERNATE



THIS PLAN TRACED FROM THE RAIL JOINT COMPANY PLAN FILE NO. 300-392 ISSUE NO.1 NOV 5, 1953

DRAWN BY C.K.  
CHECKED BY  
APPROVED BY  
ENGR. SIG. COMM.  
AUGUST 3, 1961  
167-31M