

# G. N. RY. PLAN OF STANDARD WOOD FILLERS END POST - SHOE ANGLE WITH PLATE - STEEL STRAP & FIBER SHOE ANGLE

FOR APPLYING  
WEBER NO 1 INSULATED RAIL JOINTS  
AS SHOWN BY PLAN 167-32-B  
ON 66 LB. NORTH. PACIFIC RAIL  
OFFICE OF SUPT. OF SIGNALS, ST. PAUL, MINN.

SCALE NOV 1925

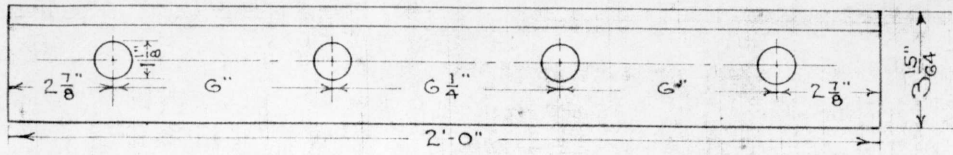


FIG. 1. INSIDE WOOD FILLER. SEE SECTION BELOW

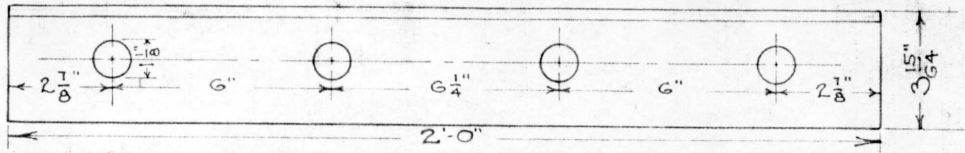


FIG. 2. OUTSIDE WOOD FILLER SEE SECTION BELOW

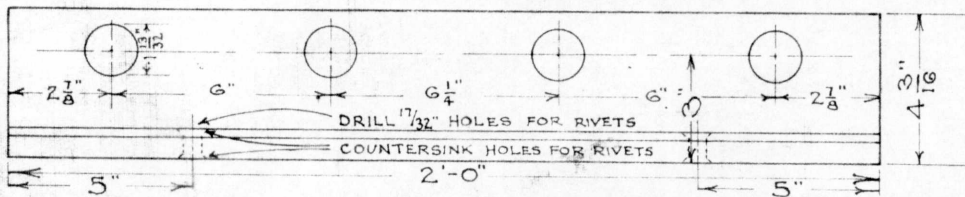


FIG. 3. IRON SHOE SEE SECTION BELOW & NOTE 2

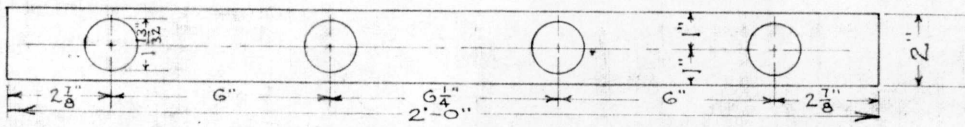


FIG. 4. STEEL STRAP SCALE - 3/16" = 1"

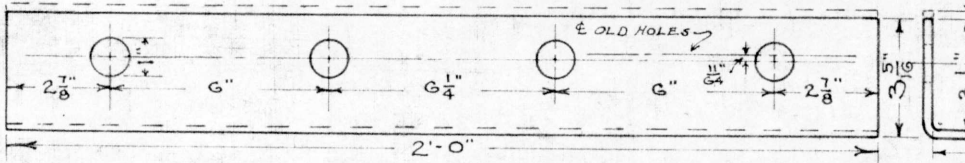
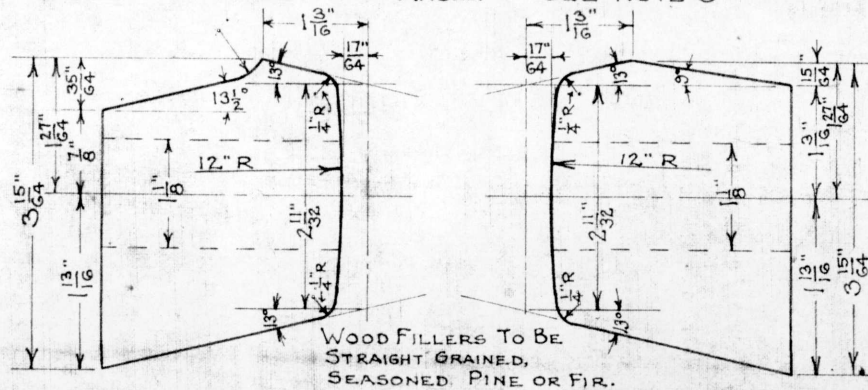


FIG. 5. FIBRE SHOE ANGLE. SEE NOTE 3



SECTION-FIG. 1.

SCALE: 1/2" = 1"

SECTION-FIG. 2.

SEE FIBRE SPECIFICATIONS ON PLAN 167-32-A.

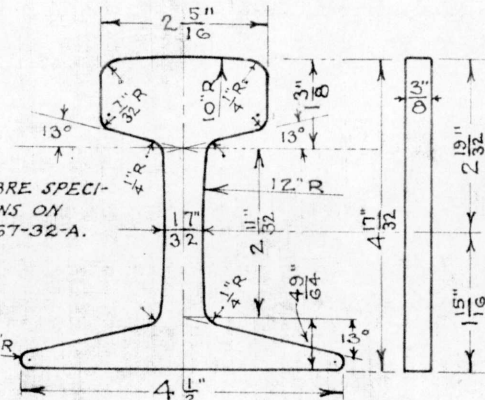


FIG. 6. FIBRE END POST.

SEE NOTE 4 SCALE: 3/8" = 1"

NOTE 1: TO APPLY THE NO. 1 WEBER JOINT PLAN 167-32-B TO 60, 68, & 75-87 LB. RAIL SECTIONS, THE FOLLOWING CHANGES ARE REQUIRED:

- (a) USE 167-32-J, FIG. 1. INSTEAD OF 167-32-B, FIG. H.
- (b) " 167-32-J, FIG. 2 " " " " " A.
- (c) USE STEEL STRAP, FIG. 4 " " " " " J.
- (d) " END POST FIG. 6 " " " " " L.
- (e) IRON SHOE - SEE NOTE 2
- (f) FIBRE SHOE ANGLE - SEE NOTE 3
- (g) FIBRE BUSHINGS, LOCK NUTS, BOLTS & NUTS REQUIRE NO CHANGE; (h) FIBRE & METAL WASHER PLATES TO BE RESPECTIVELY FIGS. E & F, FROM 167-31A INSTEAD OF FIGS. D & E, FROM 167-32-B.

NOTE 2: THE CHANGE IN IRON SHOE 167-32-B, FIG. F, CONSISTS OF DRILLING HOLES AS SHOWN BY FIG. 3, RIVETING ON AN IRON PLATE 1/4" x 6" x 2'-0"; SEE SECTION FIG. 3.

NOTE 3: THE CHANGE IN FIBRE SHOE ANGLE 167-32-B, FIG. B, CONSISTS OF CUTTING 1/4" OFF TOP OF FIBRE & MAKING THE HOLES 1/8" LOWER AS PER FIG. 5.

NOTE 4: WHEN FIBRE END POST, FIG. 6, IS USED ON 60-LB. RAIL 1/8" MUST BE CUT OFF TOP MAKING IT 4 1/4" HIGH.

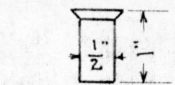
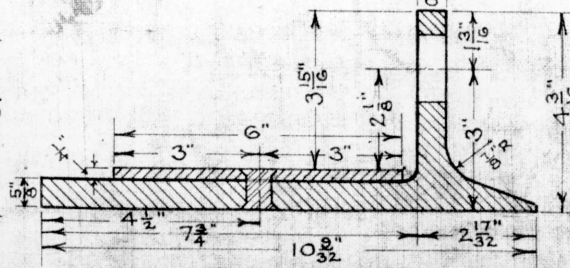


FIG. 7. RIVET.



SECTION-FIG. 3

SCALE: 1/4" = 1"

DRAWN BY *Paul*  
CHECKED BY *C.P.C.*  
APPROVED BY *C.S.*  
S.U.P.T. SIGNALS

11-17-25

REV. 167-32-J