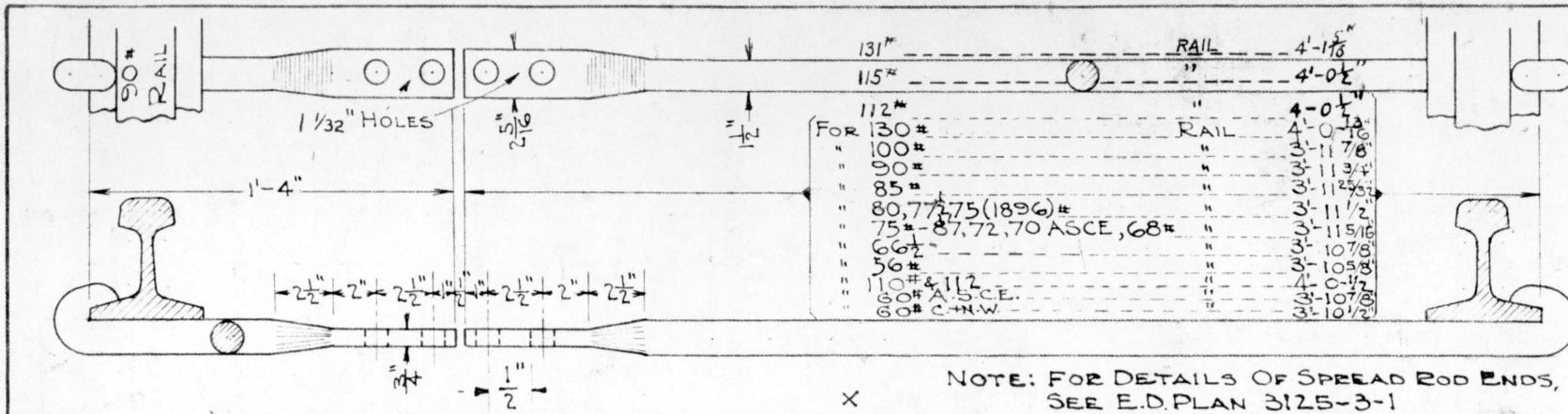


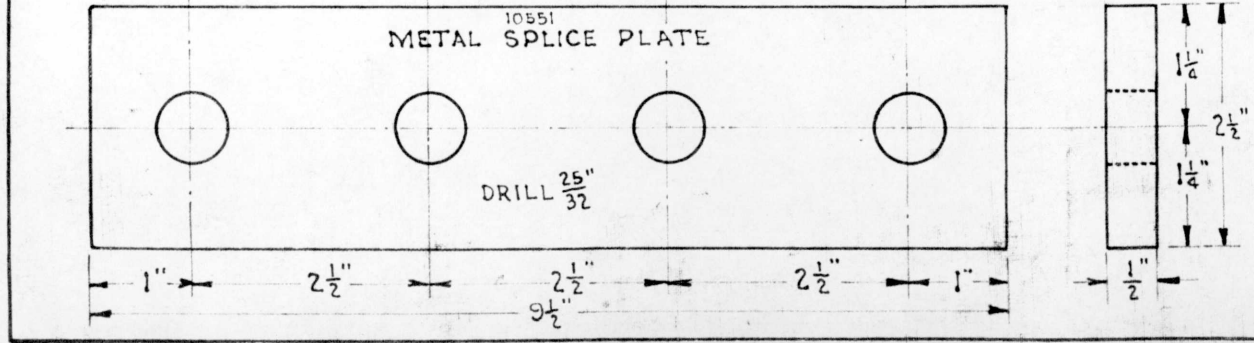
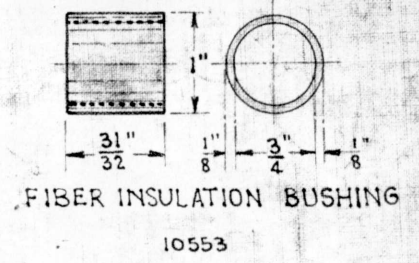
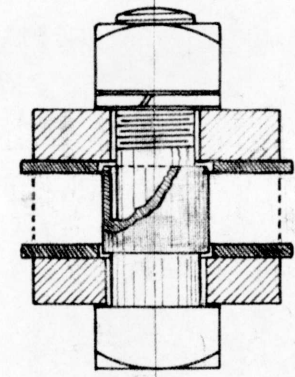
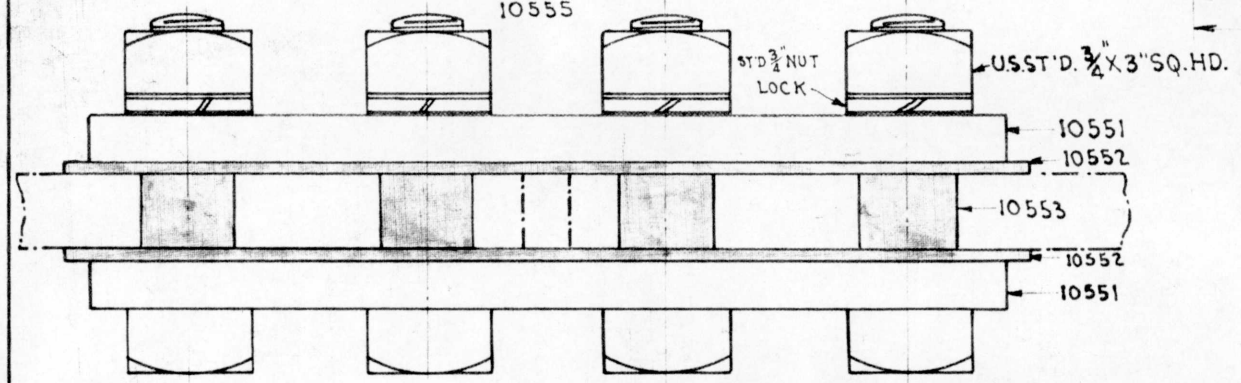
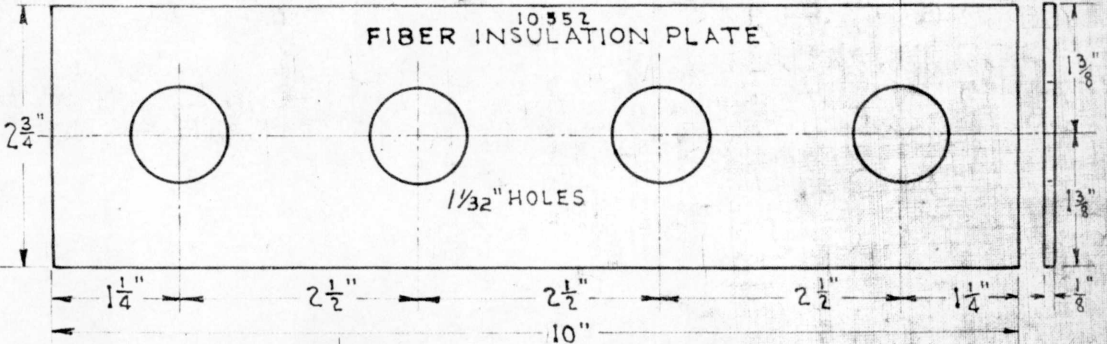
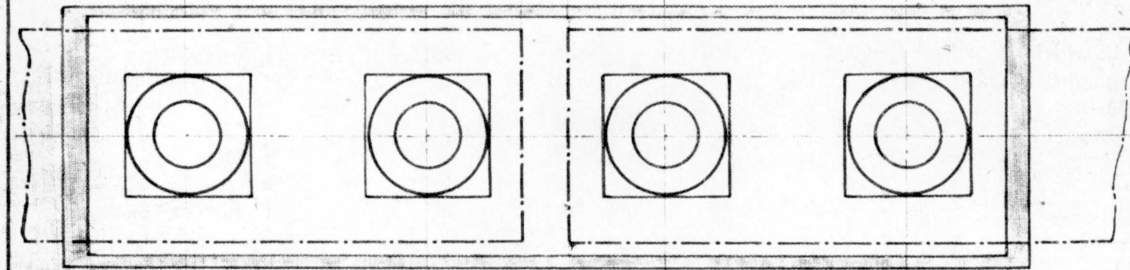
A



SPREAD ROD INSULATION

NOTE :- REVISED 3-10-25 - INSULATION MOVED FROM CENTER.

NOTE: FOR DETAILS OF SPREAD ROD ENDS, SEE E.D. PLAN 3125-3-1



BILL OF MATERIAL.

1	ROUND SPREAD ROD 1102-8 CUT & FORGED AS PER THIS DRAWING.
2	METAL SPLICE PLATES RSA 10551
2	FIBER INSULATION PLATES RSA 10552
4	" " BUSHINGS RSA 10553
4	ST'D 3/4" X 3" SQ. HD. BOLTS & NUTS.
4	ST'D 3/4" NUT LOCKS.

DRAWN BY *BC*

CHECKED BY *CBC*

APPROVED BY *Cal*

SIGNAL ENGINEER

APRIL 7, 1923.

8-27-56

11-23-49

6-30-43

12-9-27

4-8-27

10-30-26

REVISED 3/25

SEE NOTE 25

167-42A