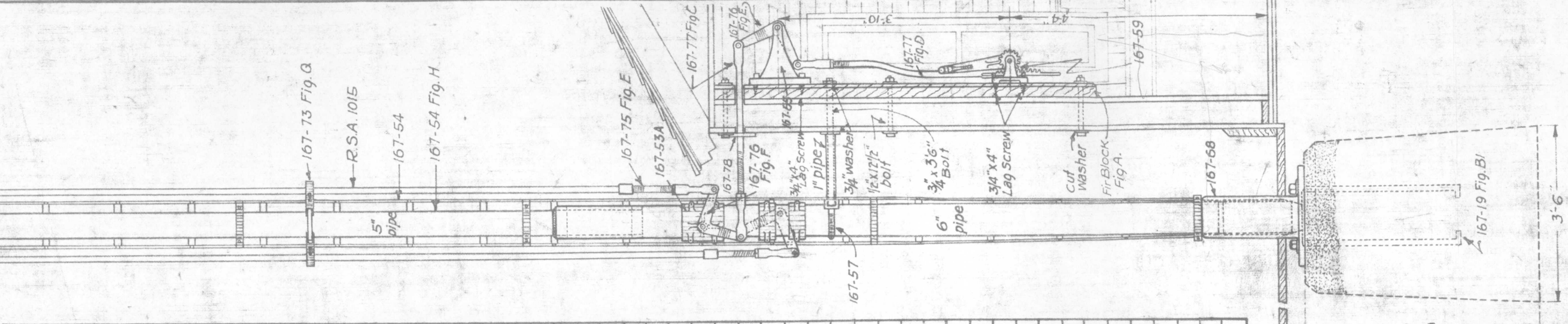


BILL OF MATERIALS FOR LOCATION NO. 1			
Quantity	Name of Article	G.N. Number	R.S.A. Number
1	Signal Mast	167-54 Fig. H	10358
1	Ground Signal Base	167-68	10341
1	Ladder, complete with stays and clamps	167-54	135710 Modified
1	Double Spectacle Bearing Complete	167-69	13561
1	Lamp Bracket Complete	167-58 Fig. J	13564
1	Pipe Cover for 5" Pipe	167-70 Fig. B	13562
2	Spectacles, complete, with 2 studs.	167-66	12351
2	Single Crank Bearing Clamps for 6" pipe, comp.	167-53A	13556 Modified
1	Two way Vertical Crank Stand, 12" High	167-65 A	1067 Modified
1	Two Lever wall Machine, Complete	167-59 Fig. J	11974
2	9" x 9" Rt. A. Cranks, 2 5/16" Offset, I-R.H. I-L.H.	167-76 Fig. E.	10075 Modified
2	Adjustable Links, Complete.	167-77 Fig. C	10198 Modified
2	Adjustable Links, 1 3/4" x 1 1/4" Offset, Comp.	167-77 Fig. D	" "
2	Screw Jaws, 3/4" Offset, Complete	167-75 Fig. E.	11951
2	Eye Rods, Tang. End.	167-77 Fig. E.	102313
1	Clamp & Guide for Vertical Connection	167-73 Fig. Q	
1	Clamp for 6" Pipe, Complete.	167-57	
2	Blade Plates	167-55 Fig. A	
2	Signal Blades	167-14 Fig. C	10653
1	G.N. Semaphore Train Order		
	Signal Lamp, No 10		1015
30	Lin. ft. 1" Galv. Iron Pipe, 2 1/2' lengths		10153
8	1/4" x 1 1/16" C. Hd. Rivets		
1	Pc. Fir, 4" x 12" 7'-0" Sq. Painted as shown by Fig A, this plan		
2	8 3/16" Red. Corning Convex		
	High Transmission R.S.A. Roundels		
2	8 3/16" Yellow-Corning H.T., R.S.A. Roundels		
2	8 3/16" Green " " " " " "		
4	1" x 40" Anchor Bolts	167-19 Fig. B1	
8	Blade Bolts, 1/2" x 1 1/2" Std. Mach. Bolts, Sq. Hd. & Nut.		
8	3/4" x 4" Lag Screws		
12	1/2" Cut Washers		
1/2	Gal. Rogers Black, Paint		
1/4	lb. Oakum for Caulking		To be furnished when
1/2	lb. Ground Sulphur		Mast & Base are assembled
2	lbs. Putty		on ground.
6	Sacks Cement		
6	1/2" x 1 1/2" Std. Mach. Bolts, Sq. Hd. & Nut.		
1	3/4" x 3 1/2" Std. Mach. Bolt, Sq. Hd. & Hex. Nut.		
2	3/4" Cut Washers		
2	9" x 9" Rt. A. Cranks, 2 5/16" Offset, I-R.H. I-L.H.	167-76 Fig. F.	10076 Modified.
2	Depot Wall Covers	167-78	
8	# 14 - 1/2" Flat Hd. Screws.		
1/2	Cu. Yds. Clean, Coarse Gravel,		
	from Supts or near site		
	of work.		



Note: Signal location No. 1 is to be used in all cases except at stations where view to signal from approaching train is obstructed by water tank or other structure. In such cases signal location No. 2 is to be used. When signal location No. 2 is used in no tracks which are less than 17' between centers. The tracks shall be preferably 18' or more between centers. Where there is no track beyond the signal place center of semaphore eight feet (8') from gauge of nearest rail.

Note: This plan supercedes plan 167-48A, dated 3-6-17

G. N. RY.
PLAN OF STANDARD
TRAIN ORDER SIGNAL
LOCATION NO. 1

OFFICE OF SIGNAL ENGINEER
SCALE: IN. = 1 FT.
DECEMBER 1917
APPROVED

Drawn by: *Alth*
Checked by: *THR*
Approved by: *COB*
Signal Eng.
12-28-17
167-48A

BC