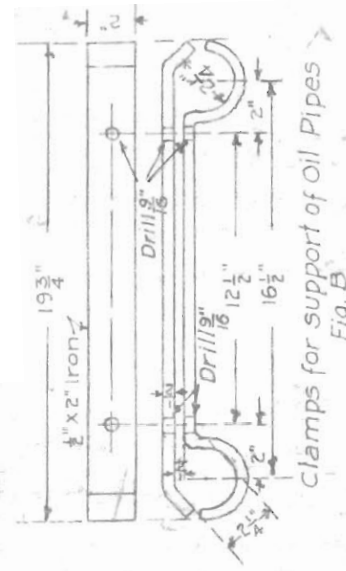


No. 10 Semaphore Lamp



Clamps for support of oil Pipes Fig. B

Quantity	Bill of Materials For Location No. 2	G.N. No.	R.S.A. No.
1	Signal Mast	167-54	Fig. H 10358
1	Ground Signal Base	167-68	10341
1	Ladder complete, with stays & clamps.	167-54	13570 Modified
1	Double Spectacle Bearing, complete	167-69	13561
1	Lamp Bracket, complete	167-58	Fig. I 13564
1	Pipe Cover for 5" pipe	167-70	Fig. B 13562
2	Spectacles complete, with two studs	167-66	12351
1	Double Crank Bearing Clamp for Base, complete Fig. F	167-53	B 13558
2	One way vertical Crank-stands, 12" High Fig. G	167-54	A 1066 Modified
1	Two Lever wall Machine, complete	167-59	Fig. J 11974
2	9' x 9" R. A Cranks, 3" offset. One R. H. One L. H.	167-76	Fig. B Modified 10075
2	9' x 9" R. A Cranks	167-76	Fig. H Modified 10076
2	Screw Jaws, 4 1/2 x 1 1/4" offsets, complete	167-75	Fig. P
2	Screw Jaws, 1 1/4" offset, complete	167-77	Fig. D
2	Adjustable Links, 2 1/2" offset, complete	167-77	Fig. B
2	Solid Jaws, complete	167-75	Fig. A
2	Solid Jaws, 2 1/2" offset, complete	167-75	Fig. B
1	Solid Rod, tang. ends	167-77	Fig. A
2	Eye Rods, tang. ends	167-77	Fig. F
2	Clamps & guides for vertical connections	167-75	Fig. P
2	" " " " " " " " " " " "	167-75	Fig. R
4	Cast Iron Piers	167-44	10581
4	Stuffing Boxes	167-50	1225
2	Stuffing Box Plungers	167-50	12255 Plunger A
2	" " " " " " " " " " " "	167-50	12255 Modified Plunger B
2	Blade Plates	167-55	Fig. A
2	Signal Blades	167-48	Fig. C
1	G.N. Semaphore Train Order Signal Lamp #10		
85	lin. ft. 1" Gal. Iron Pipe		1015
50	1/4" x 1 1/8" C. Hd. Rivets		10153
2	pcs 2" Pipe (Preferably Galv) each, not less than 18'-0" in length, threaded both ends		
1	pc. Fir 4" x 12" - 3'-0" Sq. S & painted as shown by Fig. A on this plan.		
2	Sets of clamps for support of Oil Pipes as shown by Fig. B, on this plan.		
2	8 1/2" Red Corning Convex, High Trans. R.S.A. Roundels		
2	8 1/2" Green " " " " " " " " " " " "		
2	8 1/2" Yellow " " " " " " " " " " " "		
4	1" x 48" Signal Foundation Bolts	167-19	Fig. B1
8	Blade bolts, 1/2" x 2" std. Mach. Bolts, Sq. Hd. & Nut		
4	1" x 12 1/2" Std. Mach. Bolts, Sq. Hd. & Nut.		
8	3/4" x 2 1/2" Std. Mach. Bolts, Sq. Hd. & Nut, with Nut Lock.		
4	1" x 15" Hook Bolts, with Nuts & Washers	167-19	Fig. A
4	3/4" x 4" Lag Screws		
8	1/2" Cut washers		
4	Gal. Rogers Black Paint		
6	Gal. Polar Ice Machine Oil		
2	lbs. Putty		
4	lb. Oakum for caulking		
1 1/2	lbs. Ground Sulphur		
2	Concrete Pipe Carrier Foundations		
10	Sacks of Cement		
3	Yds. Clean, coarse, Gravel, to be furnished by Supt or obtained near site of work		

Quantity

Bill of Materials For Location No. 2

G.N. No.	R.S.A. No.
167-54	Fig. H 10358
167-68	10341
167-54	13570 Modified
167-69	13561
167-58	Fig. I 13564
167-70	Fig. B 13562
167-66	12351
167-53	B 13558
167-54	A 1066 Modified
167-59	Fig. J 11974
167-76	Fig. B Modified 10075
167-76	Fig. H Modified 10076
167-75	Fig. P
167-77	Fig. D
167-75	Fig. A
167-75	Fig. B
167-77	Fig. A
167-77	Fig. F
167-75	Fig. P
167-75	Fig. R
167-44	10581
167-50	1225
167-50	12255 Plunger A
167-50	12255 Modified Plunger B
167-55	Fig. A
167-48	Fig. C
	1015
	10153

1" Signal Pipe R.S.A. 1015

167-73 Fig. R

Signal Mast & Ladder 167-54

167-77 Fig. A

167-73 Fig. P

1" plugged pipe R.S.A. 1015

Mast 167-54, Fig. H.

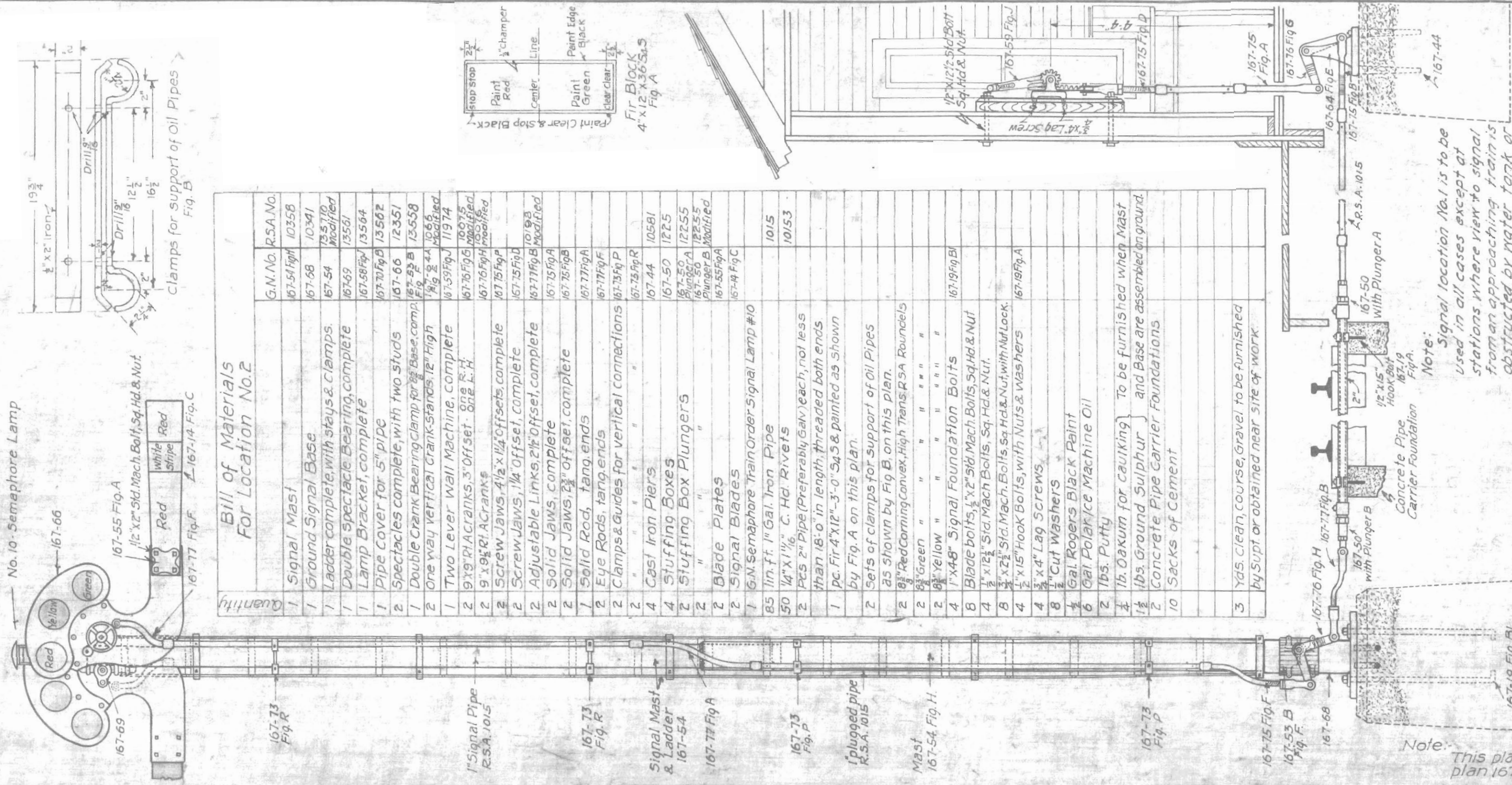
167-73 Fig. P

167-75 Fig. F

167-53 B Fig. F.

167-68

167-19 Fig. B1



Note:

This plan supercedes plan 167-48B, Dated 3-6-17

Note: Signal location No. 1 is to be used in all cases except at stations where view to signal from an approaching train is obstructed by water tank or other structure. In such cases signal location No. 2 is to be used. When signal location No. 2 is used in no case may the semaphore be located between tracks which are less than 17' between centers. The tracks shall be preferably 18' or more between centers. Where there is no track beyond the signal, place center of semaphore of eight feet (8') from gauge of nearest rail.

G. N. RY.

PLAN OF STANDARD TRAIN ORDER SIGNAL LOCATION NO. 2

Drawn by A. A. H.  
Checked by J. M. R.  
Approved by C. O. D.  
Signal Engr.

12-31-17  
167-48B

OFFICE OF SIGNAL ENGINEER  
SCALE: 1/4" = 1'-0"  
DECEMBER 1917  
AS 1030