

C

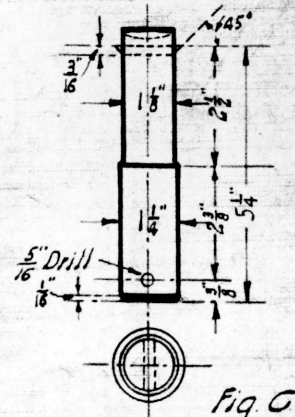
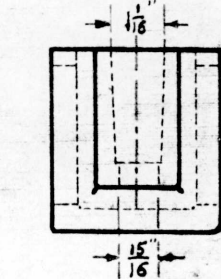
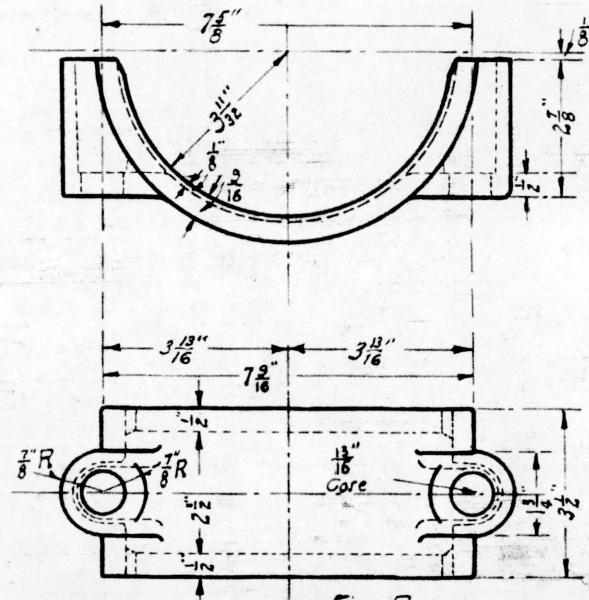
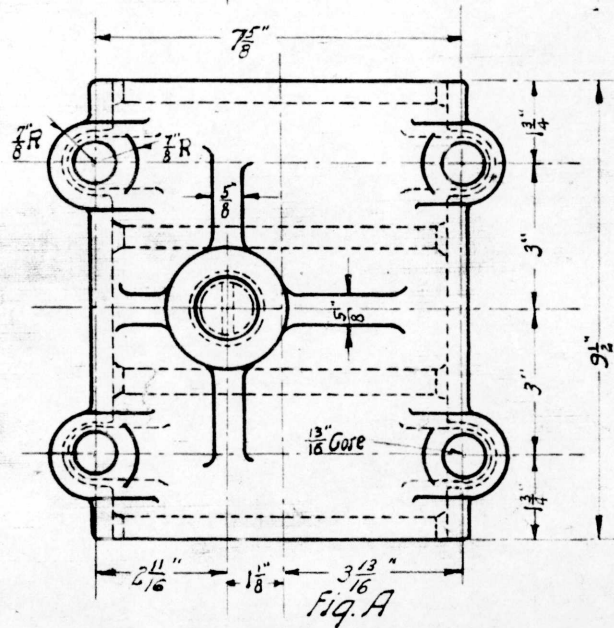
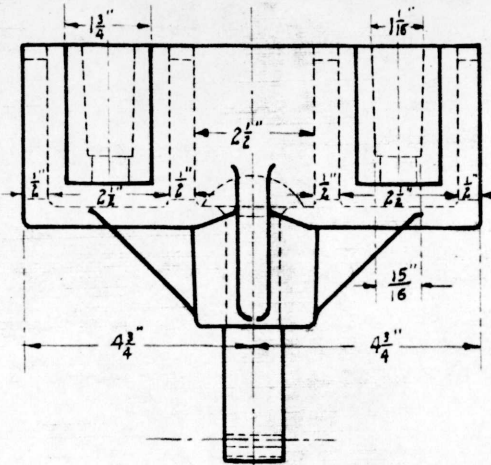
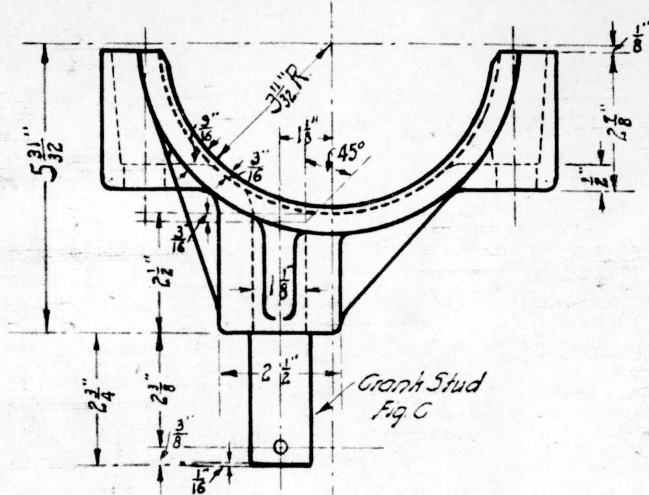
G. N. RY.
 PLAN OF STANDARD
**CRANK BEARING AND CLAMP
 FOR 6 INCH PIPE**

OFFICE OF SIGNAL ENGINEER

SCALE 1/4 IN. = 1 IN.

NOVEMBER 1917

BILL OF MATERIAL		
FOR CRANK BEARING & CLAMP		
1- WASHER	FIG. D	
1- CRANK BEARING	FIG. A	PATTERN NO. R. 3949
2- BACK CLAMPS	FIG. B	" " " 3979
1- 3/16" x 2" COTTER		
4- 3/4" x 7" STD. SQ. HD. BOLTS WITH HEX. NUTS & LOCK WASHERS.		



Crank Bearing Clamp
(Cast Iron)

Fig B
Back Clamp
(MALLEABLE IRON)

Note,
 Assembly of Crank Bearing
 Clamp and Back Clamp
 similar to 167-53B. Fig. E.

Fig. C
Crank Stud
(G.R. Steel)

This Crank Bearing & Clamp similar to R.S.A. Drawg. 1398

Drawn by: A.H.H.
 Checked by: J.M.R.
 Approved by: C.A.S.
 Signal Eng.
 11-23-17
 167-53A