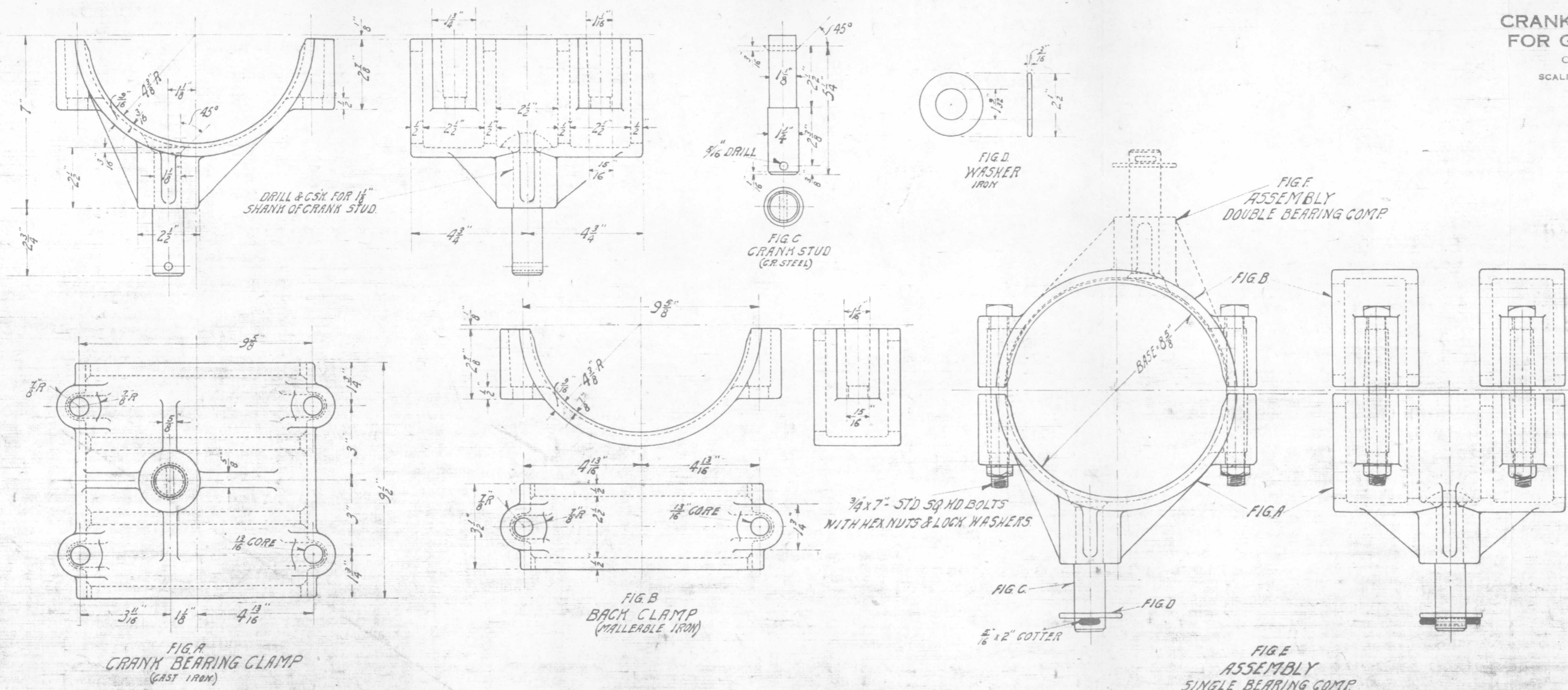


G. N. RY.
 PLAN OF STANDARD
**CRANK BEARING AND CLAMP
 FOR GROUND SIGNAL BASE**

OFFICE OF SIGNAL ENGINEER
 SCALE $\frac{1}{4}$ IN. = 1 IN. JANUARY 1918



BILL OF MATERIAL
 FOR SINGLE CRANK BEARING CLAMP FIG E

1-CRANK BEARINGS FIG. A. PATTERN NO. R 3948
2-BACK CLAMPS FIG. B. " " " 3978
1-WASHER FIG. D.
1- $\frac{5}{16} \times 2$ " COTTER
4- $\frac{3}{4} \times 7$ STD. SQ. HD. BOLTS WITH HEX. NUTS & LOCK WASHERS.

BILL OF MATERIAL
 FOR DOUBLE CRANK BEARING CLAMP FIG F

2-CRANK BEARINGS FIG. A. PATTERN NO. R 3948
2-WASHERS FIG. D.
2- $\frac{5}{16} \times 2$ " COTTERS
4- $\frac{3}{4} \times 7$ STD. SQ. HD. BOLTS WITH HEX. NUTS & LOCK WASHERS.

Drawn by *F.A.H.*
 Checked by *J.P.R.*
 Approved by *C.S.*
 Signal Eng.
 1-10-18
167-53B

NOTE: TAKEN FROM R.S.A. DRG. 1355