

FIG. B
RACK
(CAST IRON)

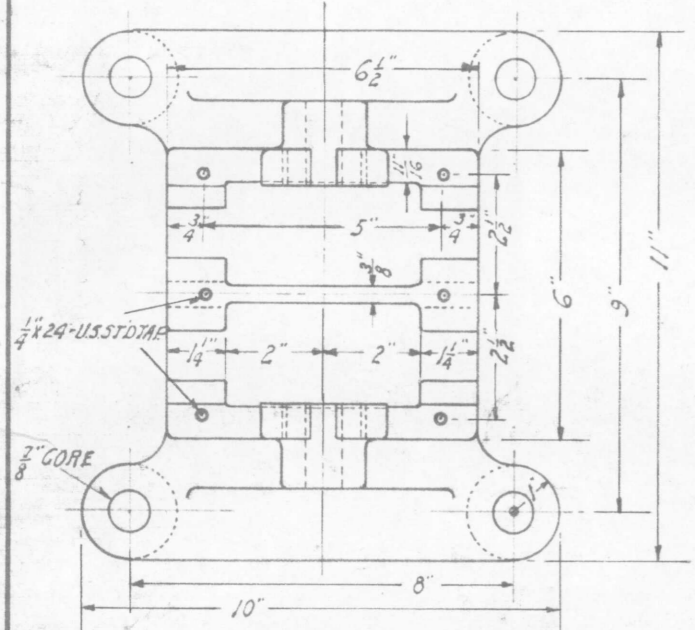


FIG. A
BASE
(CAST IRON)

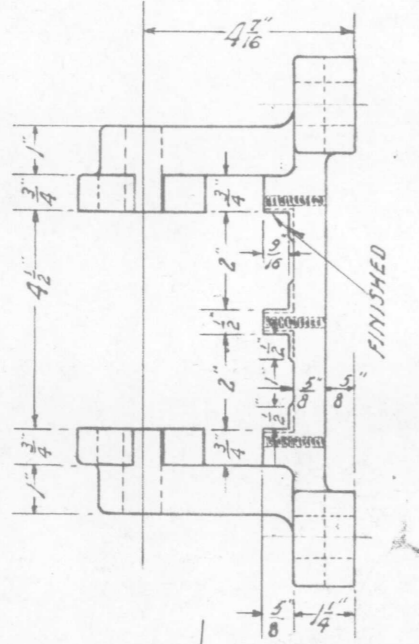


FIG. H
LEVER HANDLE
(MALLEABLE IRON)

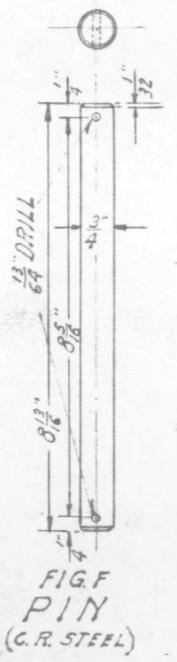


FIG. F
PIN
(C.R. STEEL)

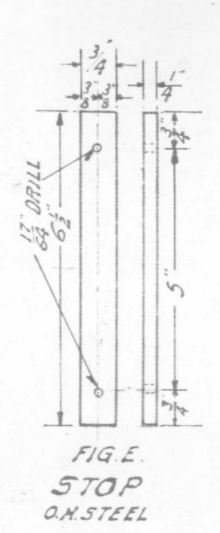


FIG. E
STOP
(O.N. STEEL)

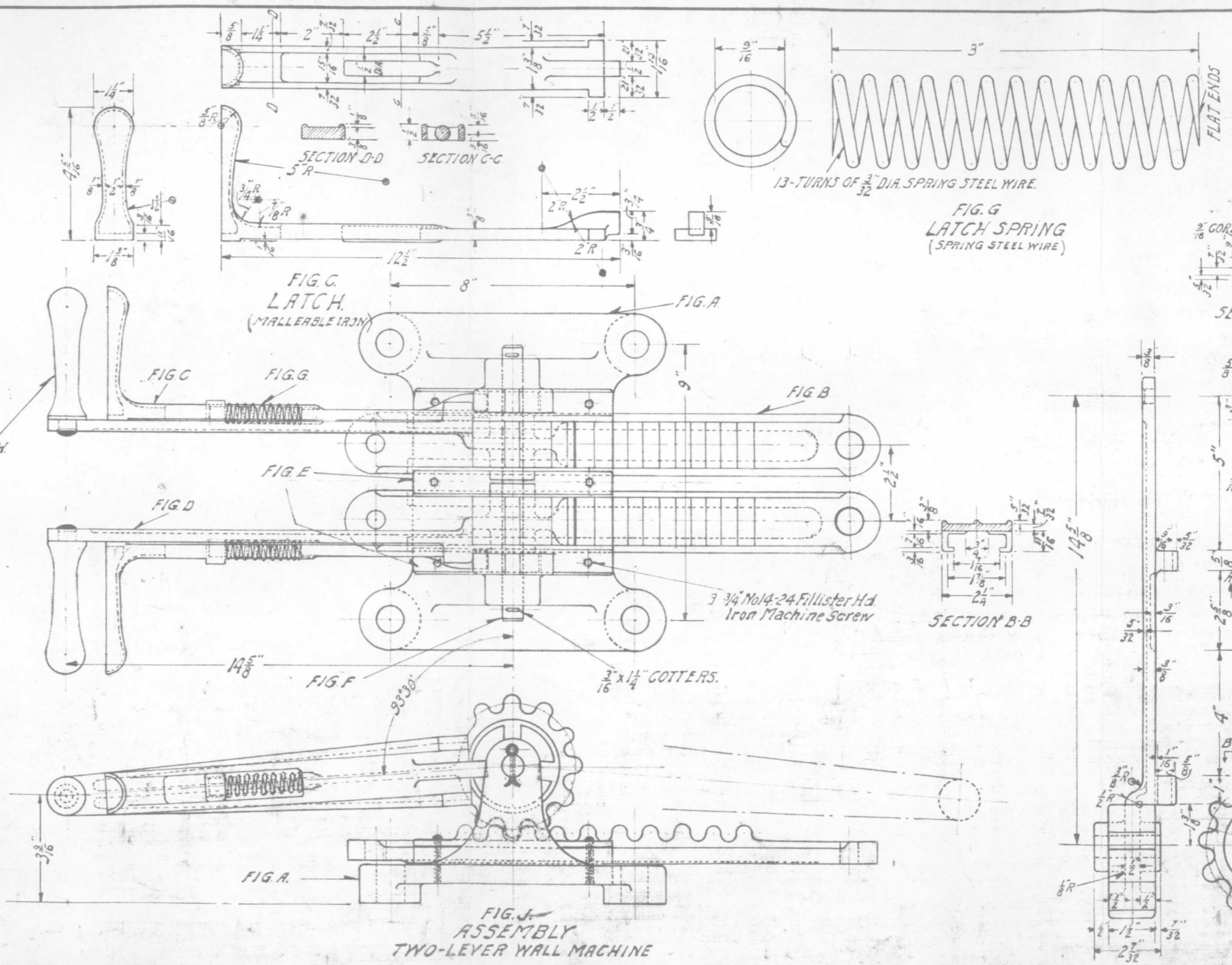


FIG. J
ASSEMBLY
TWO-LEVER WALL MACHINE

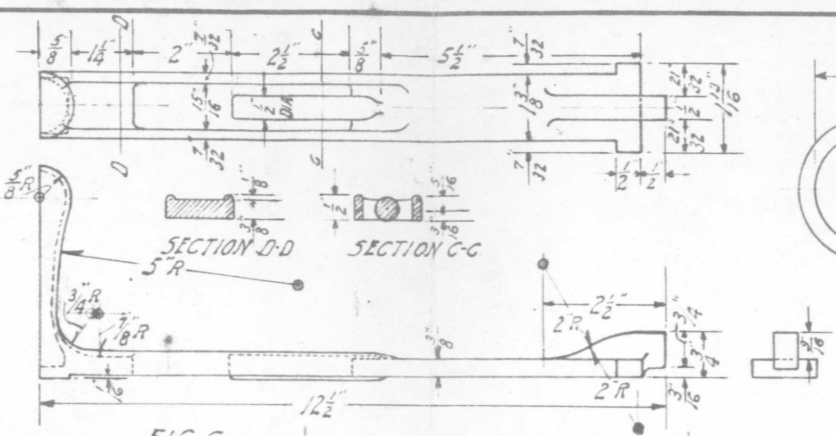


FIG. C
LATCH
(MALLEABLE IRON)

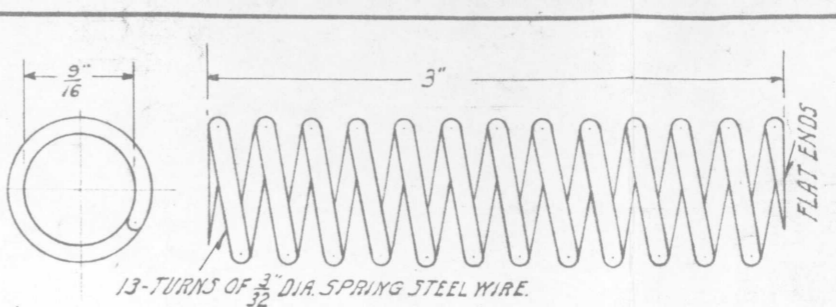
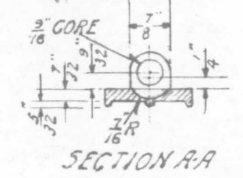
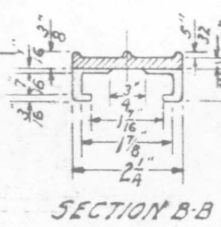


FIG. G
LATCH SPRING
(SPRING STEEL WIRE)



SECTION A-A



SECTION B-B

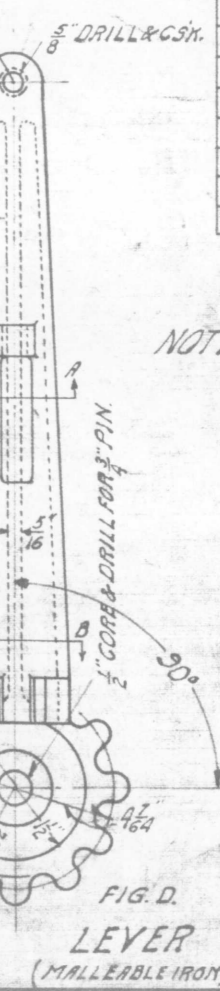


FIG. D
LEVER
(MALLEABLE IRON)

G. N. RY.
PLAN OF STANDARD
TWO-LEVER WALL MACHINE
OFFICE OF SIGNAL ENGINEER
SCALE 1/4 IN. = 1 FT. JANUARY 1918

BILL OF MATERIAL FOR 2-LEVER WALL MACHINE	
1-BASE	FIG. A PATTERN NO. R. 3925
2-RACKS	" B " " " 3926
2-LEVERS	" D " " " 3927
2-LATCHES	" C " " " 3928
2-LEVER HANDLES	FIG. H " " " 3929
3-STOPPS	" E.
1-PIN	" F.
2-LATCH SPRINGS	FIG. G.
6-3/4 No. 14-24 Fillister Hd. Iron Mach. Screw.	
2-3/16 x 1 1/4 COTTERS	

NOTE - TAKEN FROM R.S.A. DRG. 1137 & 1137

Drawn by: A.R.H.
Checked by: J.P.R.
Approved by: [Signature]
Signal Eng.
1-9-18
167-59