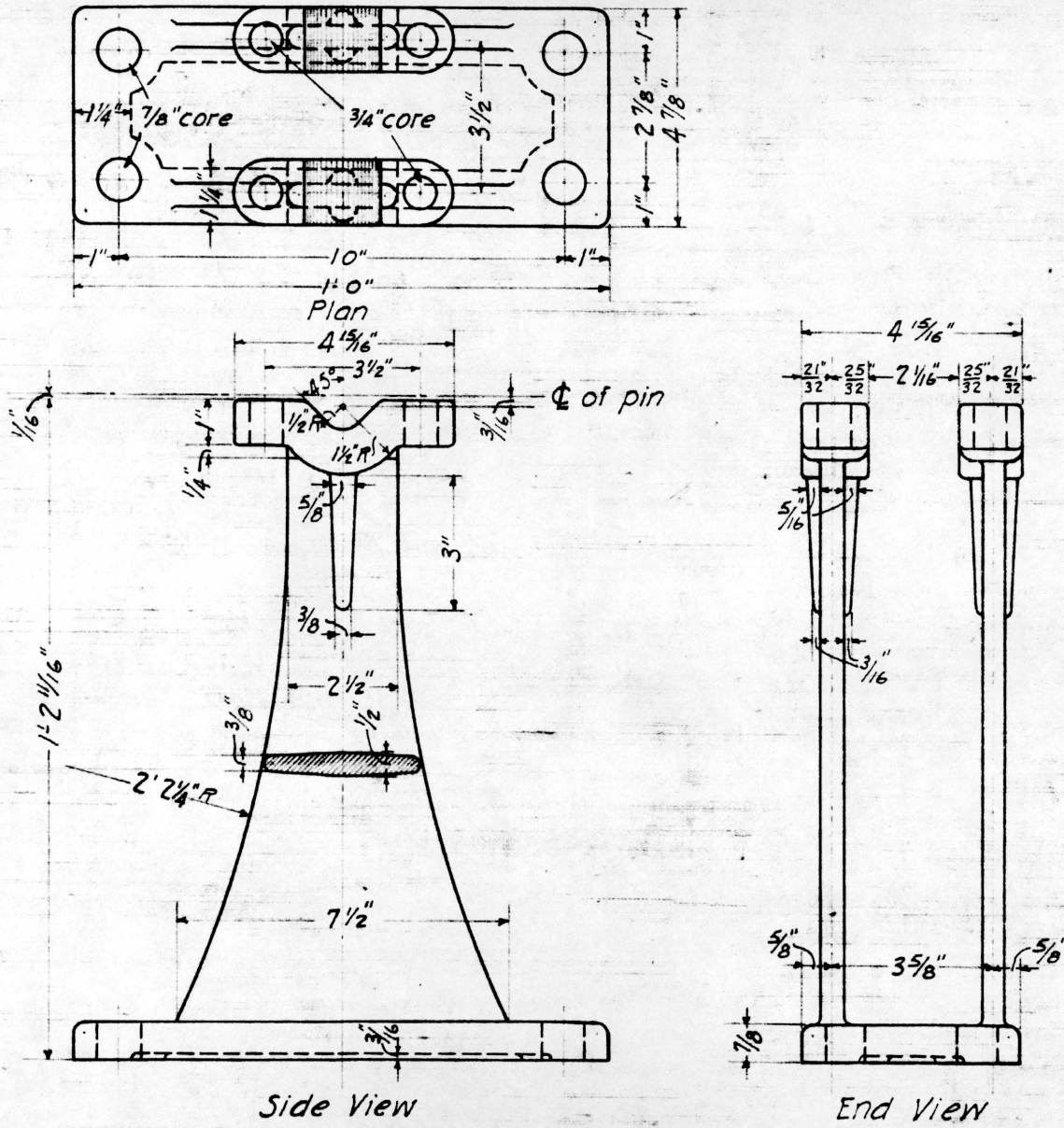


C

G. N. RY.
 PLAN OF STANDARD
1-WAY VERTICAL CRANK STAND
14 ³/₄" HIGH
 OFFICE OF SIGNAL ENGINEER

SCALE ¹/₄ IN : 1 IN

MAY 1918.



BILL OF MATERIAL	
1-Way Vertical Crank Stand	
1-Crank Stand Fig. A	Pattern No. R 3931
2-End Caps 167-64A Fig. B	" " " 3932
1-Pin 167-64A Fig. C	
4-5/8" x 3/4" Sq. Hd. Bolts with Hex. Nuts & Lock Washers	

Fig. A
 1-Way Vertical Crank Stand
 (Cast Iron)

Drawn by M.W.K.
 Checked by J.R.R.
 Approved by S.E.S.
 Signal Engr.
 5-2-1918
167-64B