

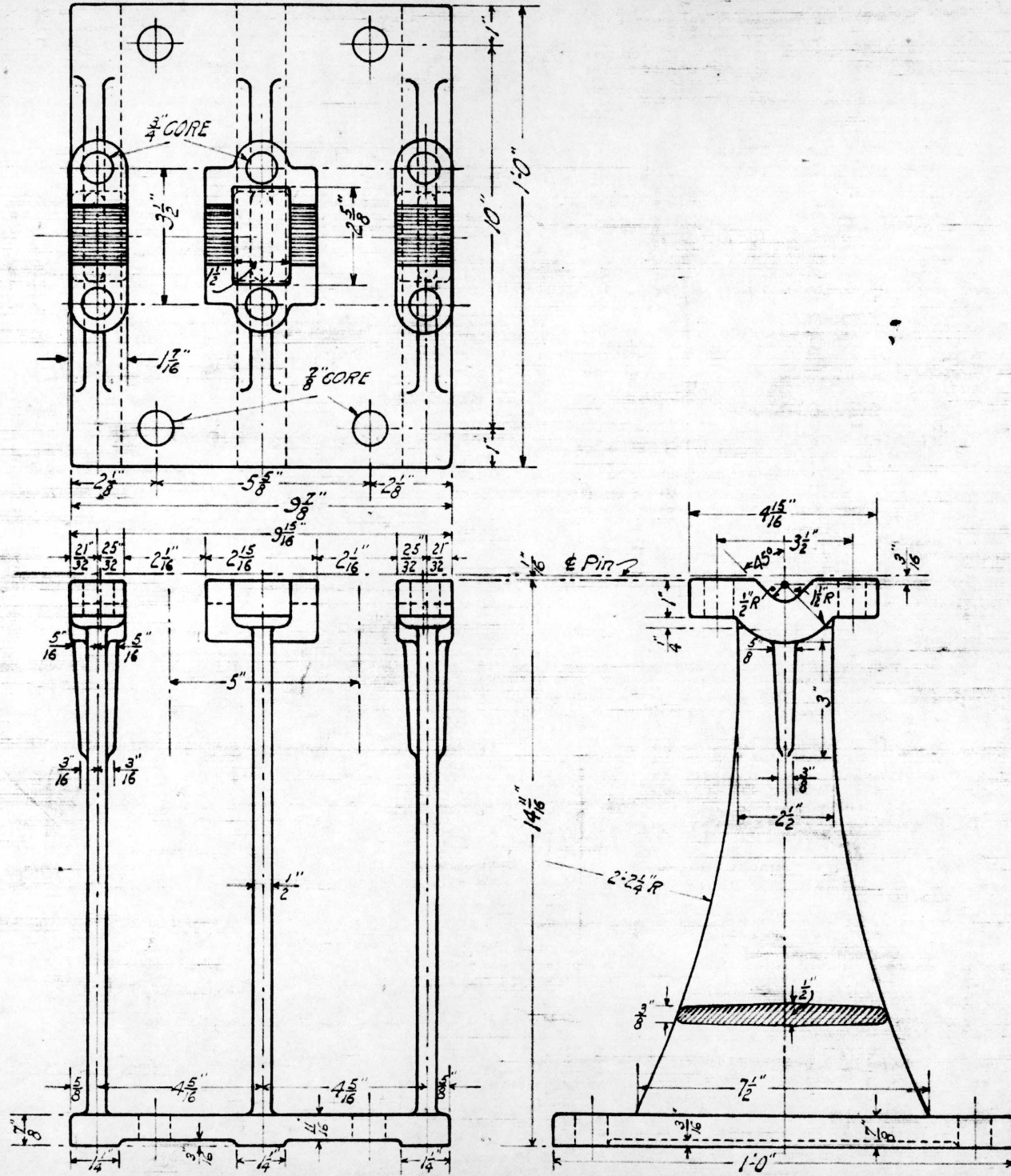
G. N. RY.
PLAN OF STANDARD
2 - WAY VERTICAL CRANK STAND

14 ³/₄" HIGH

OFFICE OF SIGNAL ENGINEER

SCALE ¹/₄ IN : 1 IN

MAY 1918.



BILL OF MATERIAL	
2WAY 14 ³ / ₄ VERTICAL CRANK STAND	
1- CRANK STAND Fig.A	PATTERN NO. R 3934
2- END CAPS 167-64A Fig.B.	" " " 3932
1- INTERMEDIATE CAP 167-65A Fig.C.	" " " 3935
2- PINS 167-64A Fig.C.	
6- $\frac{5}{8}$ x $\frac{3}{4}$ Sq Hd. BOLTS WITH HEX. NUTS & LOCK WASHERS	

FIG-A
 2-WAY VERTICAL CRANK STAND
 (CAST IRON)

R.S.A. 10674

Drawn by *ABH*
 Checked by *J.P.*
 Approved by *CAS*
 Signal Eng'r.
 5-21-18
 167-65B