

PLAN OF STANDARD  
**BASE FOR 4 IN. & 5 IN. GROUND SIGNAL MASTS**

OFFICE OF Supt. OF SIGNALS, ST. PAUL, MINN.

SCALE  $\frac{1}{4}$ " = 1" IN.

AUG. 1924

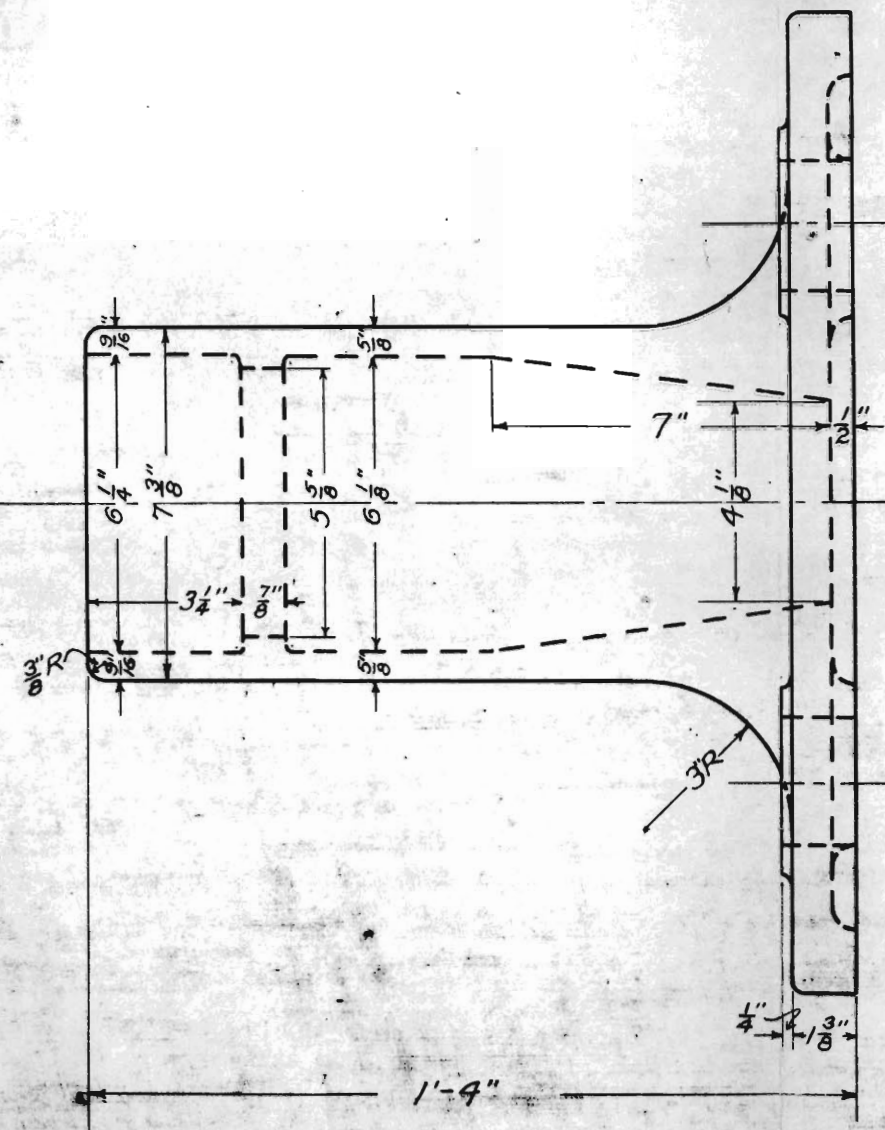
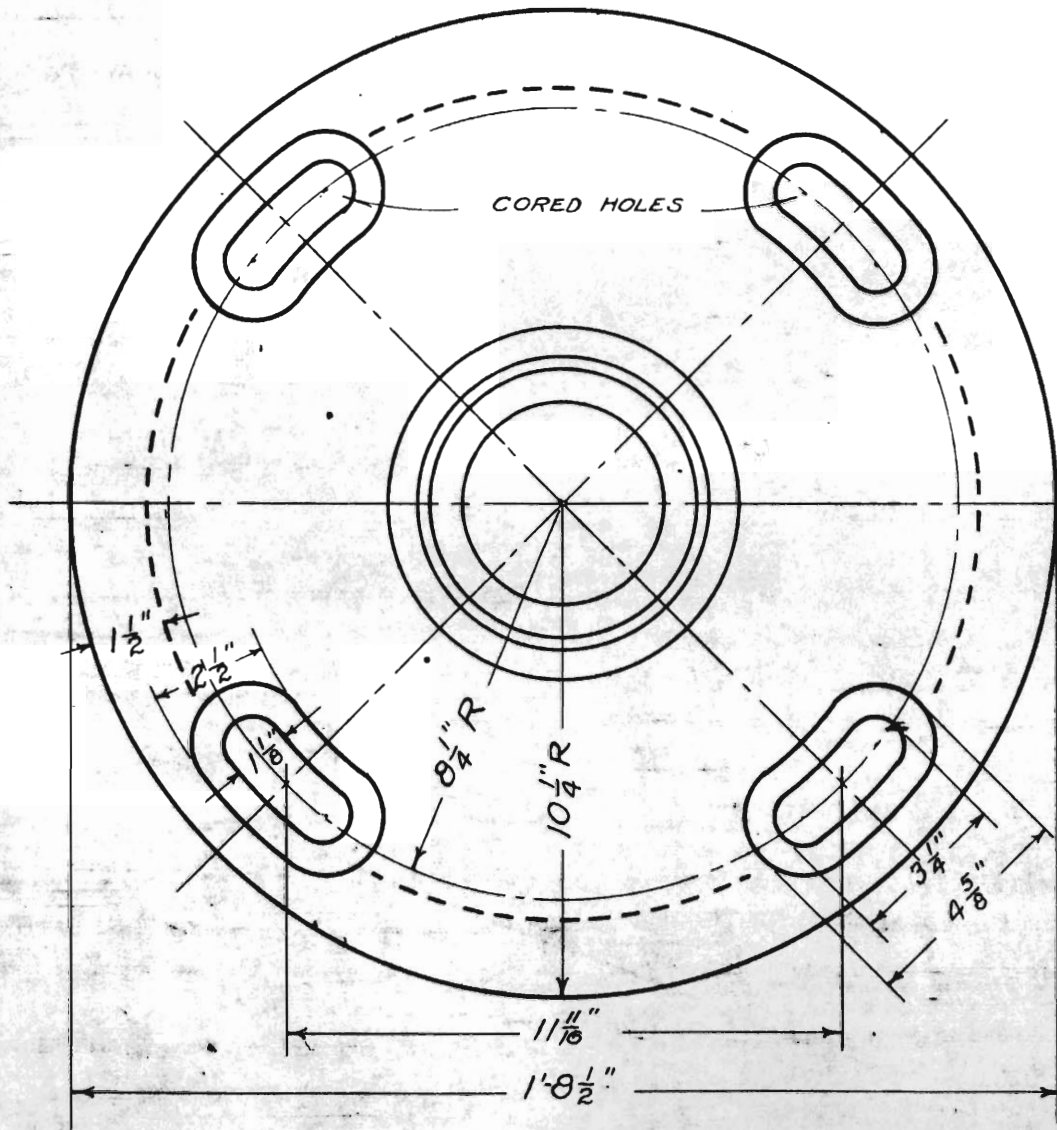


FIG. A CAST IRON BASE  
 FOR 4" OR 5" PIPE.  
 PATTERN No. R4598.

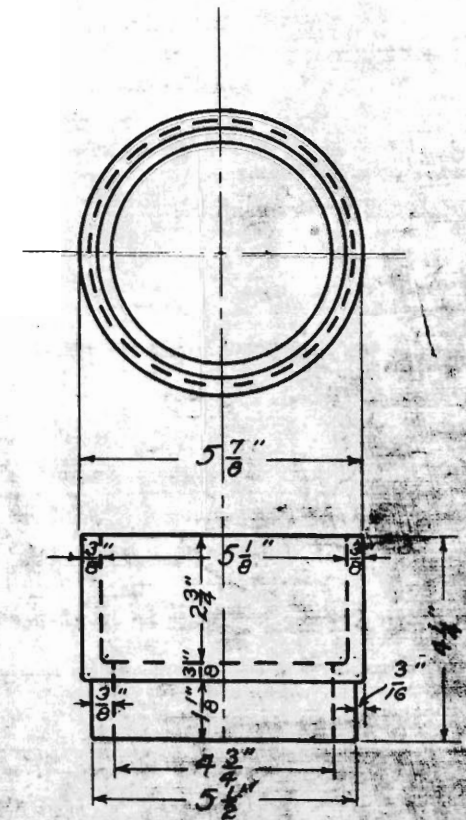


FIG. B CAST IRON  
 FILLER RING  
 FOR 4" PIPE.  
 PATTERN No. R4598.

DRAWN BY [Signature]  
 CHECKED BY [Signature]  
 APPROVED BY [Signature]  
 Supt.  
 8-14-24  
 107-68-A