

G. N. RY.

C

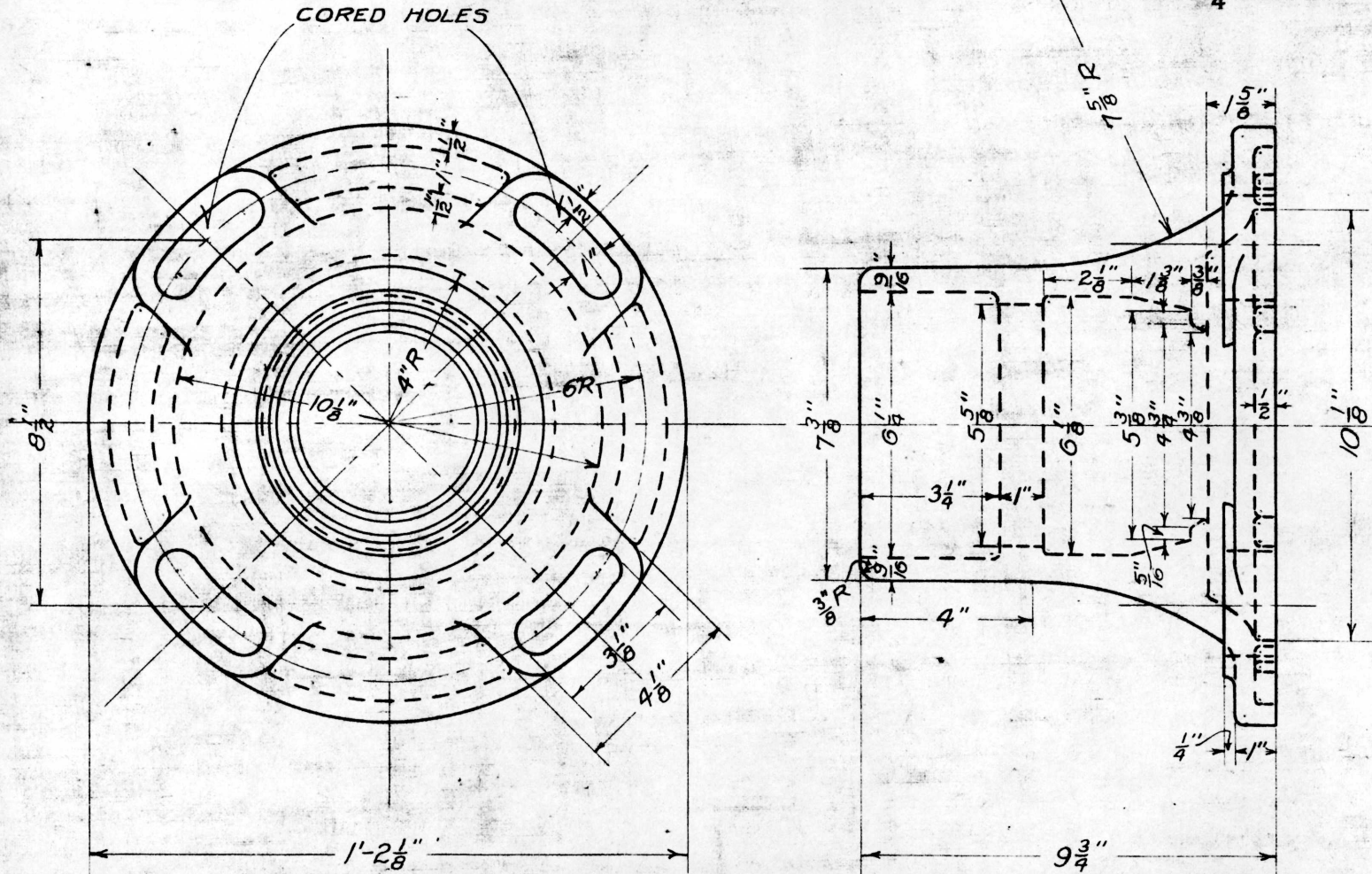
PLAN OF STANDARD

BASE FOR 4 IN. & 5 IN. CASE SIGNAL MAST

OFFICE OF SUPT. OF SIGNALS, ST. PAUL, MINN.

SCALE: $\frac{1}{4}$ IN. = 1 IN.

AUG. 1924



CAST IRON BASE For 4 in. & 5 in. Mast.

Note - Cast Iron Filler Ring (167-68-A

Fig. B) necessary for 4 in. Mast.

Pattern #R-4630

DRAWN BY *AWP*
 CHECKED BY *CRC*
 APPROVED BY *E.S.*
 SUPT. OF SIGNALS
 8-19-24
 167-68-B