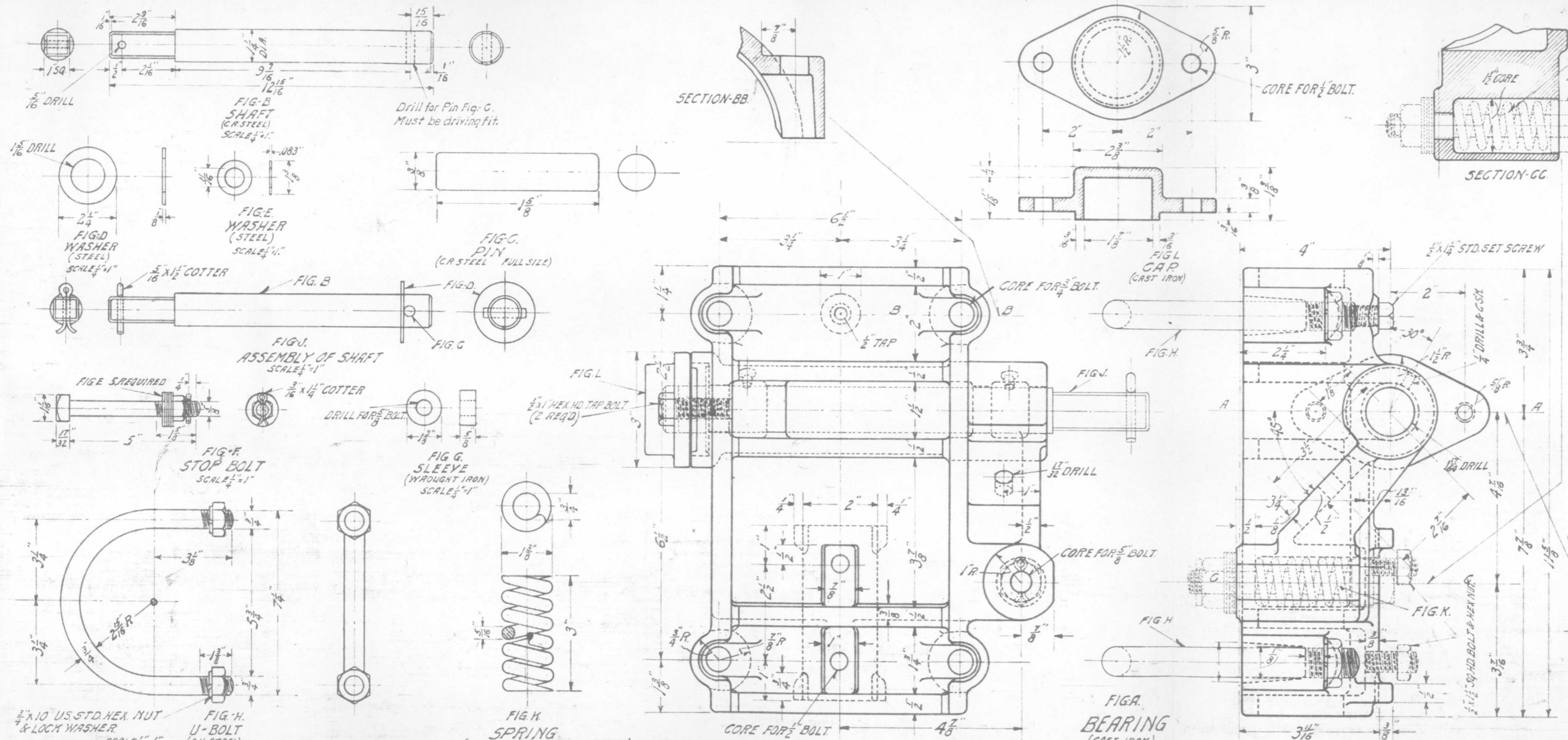


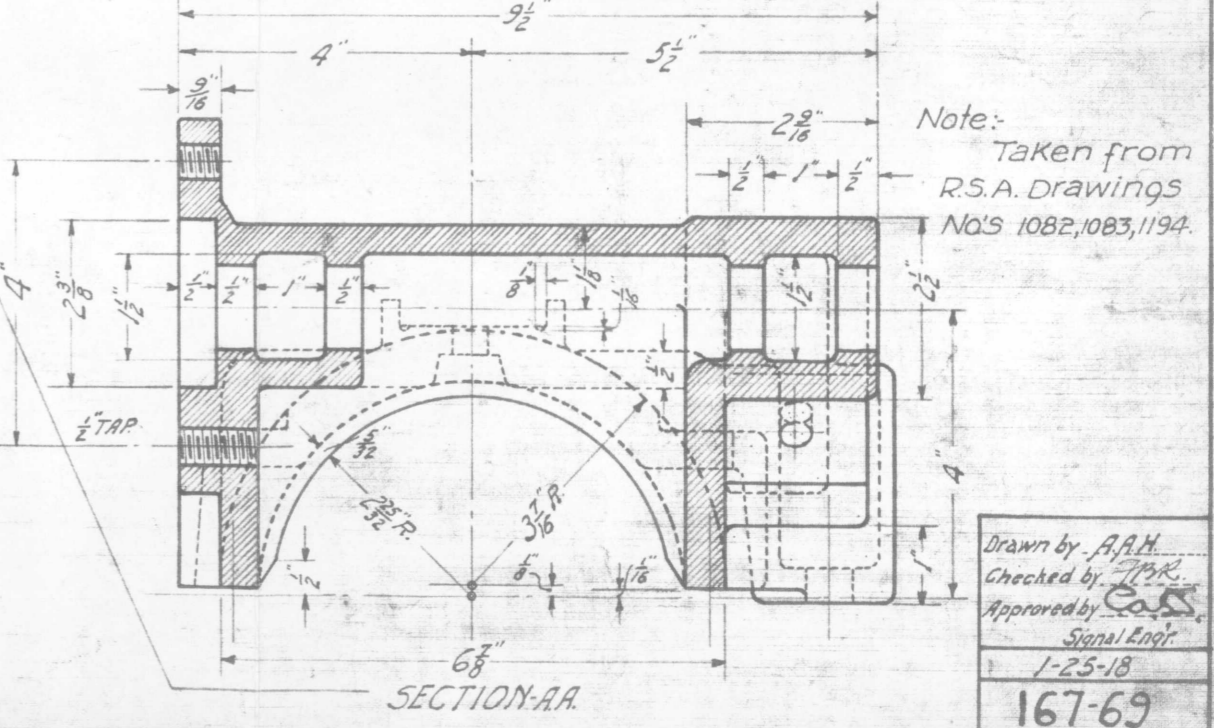
**G. N. RY.**  
**PLAN OF STANDARD**  
**MECHANICAL SEMAPHORE BEARING**

OFFICE OF SIGNAL ENGINEER  
 SCALE  $\frac{3}{8}$  IN. = 1 IN.      JANUARY 1918



(INTERLOCKING SIGNAL) BILL OF MATERIALS		(TRAIN-ORDER SIGNAL)	
BEARING COMPLETE - MECHANICAL SIGNAL		DOUBLE BEARING COMPLETE, TRAIN ORDER SIGNAL	
1 Bearing Fig. A - Pattern No. R3938		2 Bearings Fig. A - Pattern No. R3938	
1 Cap - Fig. L " " R3940		2 Caps - Fig. A " " R3940	
2 ½" x 1" Hex. Head Tap Bolts		4 ½" x 1" Hex. Head Tap Bolts	
1 Shaft Fig. B - Complete with washer, Fig. D		2 Shafts, Fig. B - Complete with washer, Fig. D	
1 Pin Fig. C & 1 5/16" x 1/12" cotter, Assembly as shown by Fig. J		2 Pins - Fig. C & 2 5/16" x 1/12" cotters, Assembly as shown by Fig. J	
1 Stop Bolt - Fig. F, complete, with 5 washers, Fig. E, 1 - Hex. Nut, 1 - 3/16" x 1/4" cotter, 1 - Spring - Fig. K, 1 - sleeve Fig. G, Assembly as shown by Fig. A.		2 Stop Bolts - Fig. F, complete, with 10 washers, Fig. E, 2 - Hex. Nuts, 2 - 3/16" x 1/4" cotters, 2 Springs - Fig. K, 2 - sleeves Fig. G, Assembly as shown by Fig. A.	
1 ½" x 1/4" Std. Set Screw		2 ½" x 1/4" Std. Set Screws	
2 ½" x 1/2" Sq. Hd. Bolt - Hex. Nut, for Lamp Bracket		2 ½" x 1/2" Sq. Hd. Bolt - Hex. Nut for Lamp Bracket	
2 U - Bolts, Hex. Nut & Lock washer, Fig. H.		4 3/4" x 5 1/2" sq. Hd. Bolt - Hex. Nut & Lock washer.	

Note: Fig. A, does not include Cap Fig. L, Shaft Fig. J, U Bolt Fig. H, Stop Bolt Fig. F, or Spring Fig. K. These parts added to show assembly.



Note:  
 Taken from  
 R.S.A. Drawings  
 No's 1082, 1083, 1194.

Drawn by A.A.H.  
 Checked by J.M.K.  
 Approved by C.O.S.  
 Signal Engr.  
 1-25-18  
 167-69