

C

G. N. RY.
PLAN OF STANDARD
PINNACLE AND COVER
FOR 5" PIPE

OFFICE OF SIGNAL ENGINEER
 SCALE 1/4 IN. = 1 IN. JANUARY 1918

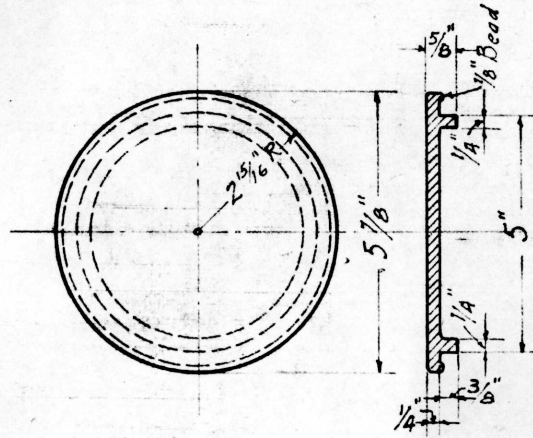
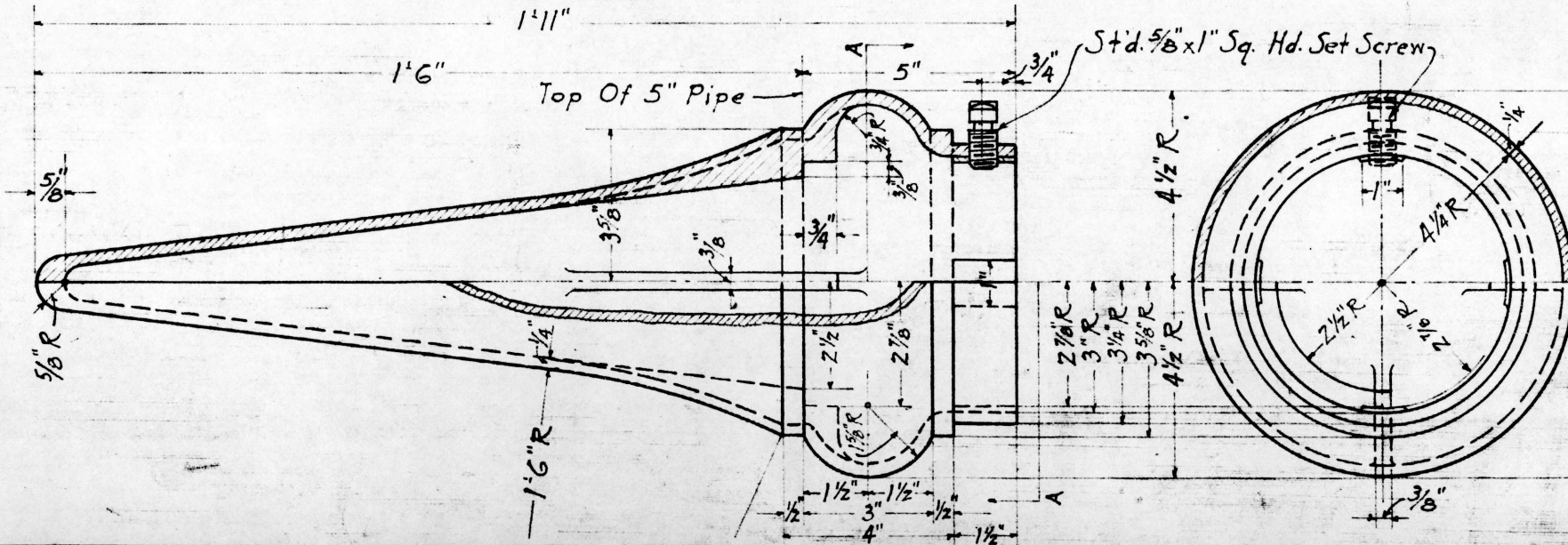


Fig. B - 5" Pipe Cover
 For Train Order Signal
 (Cast Iron)
 Pattern No. R3941



Half Section & View "A-A"

Fig. A - Pinnacle
 For 5" Pipe
 (Cast Iron)
 Pattern No. R3942

Note -
 Pinnacle Taken From
 R.S.A. Drg. 1050
 Pipe Cover Taken From
 R.S.A. Drg. 1356

Drawn by	M.D.W.
Checked by	F.A.R.
Approved by	C.A.D.
	Signal Eng'r.
	1-22-1918
	167-70.